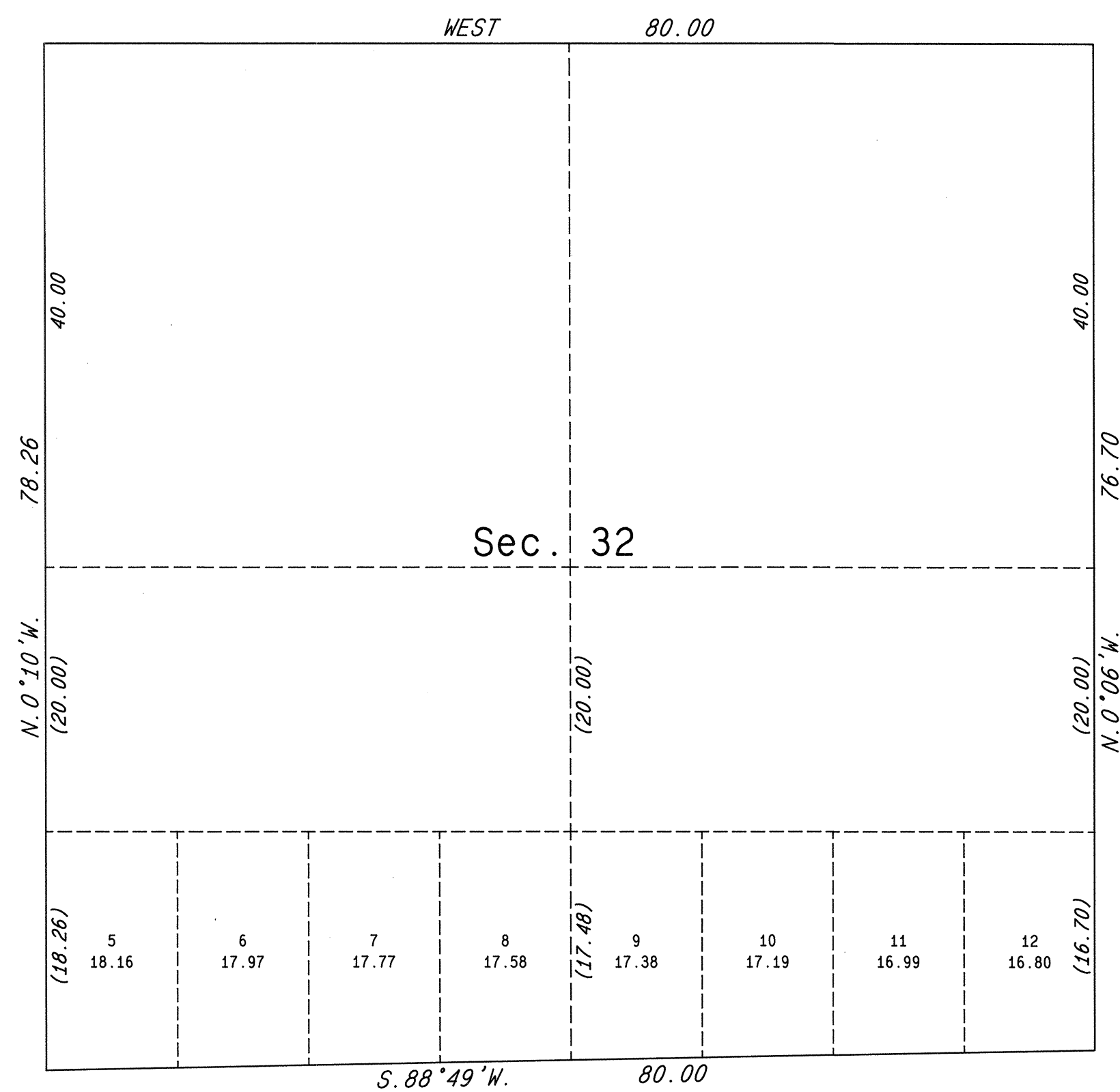
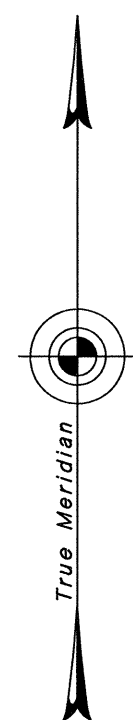


ORIGINAL

TOWNSHIP 23 NORTH, RANGE 27 EAST, OF THE MOUNT DIABLO MERIDIAN, NEVADA
SUPPLEMENTAL PLAT OF SECTION 32



This plat, showing a subdivision of original lots 1, 2, 3 and 4, sec. 32, T. 23 N., R. 27 E., Mount Diablo Meridian, Nevada, is based upon the plat approved May 22, 1912.

UNITED STATES DEPARTMENT OF THE INTERIOR
BUREAU OF LAND MANAGEMENT

Reno, Nevada

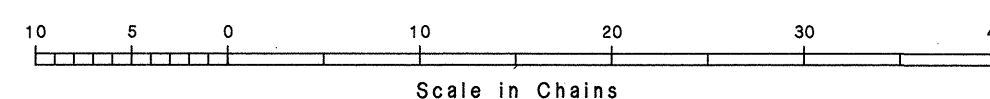
May 18, 1987

This plat, showing amended lottings, is based upon the official records and, having been correctly prepared in accordance with the regulations of this Bureau, is hereby accepted.

For the Director

Lacel E. Bland

Chief Cadastral Surveyor



6/2/87
JRM