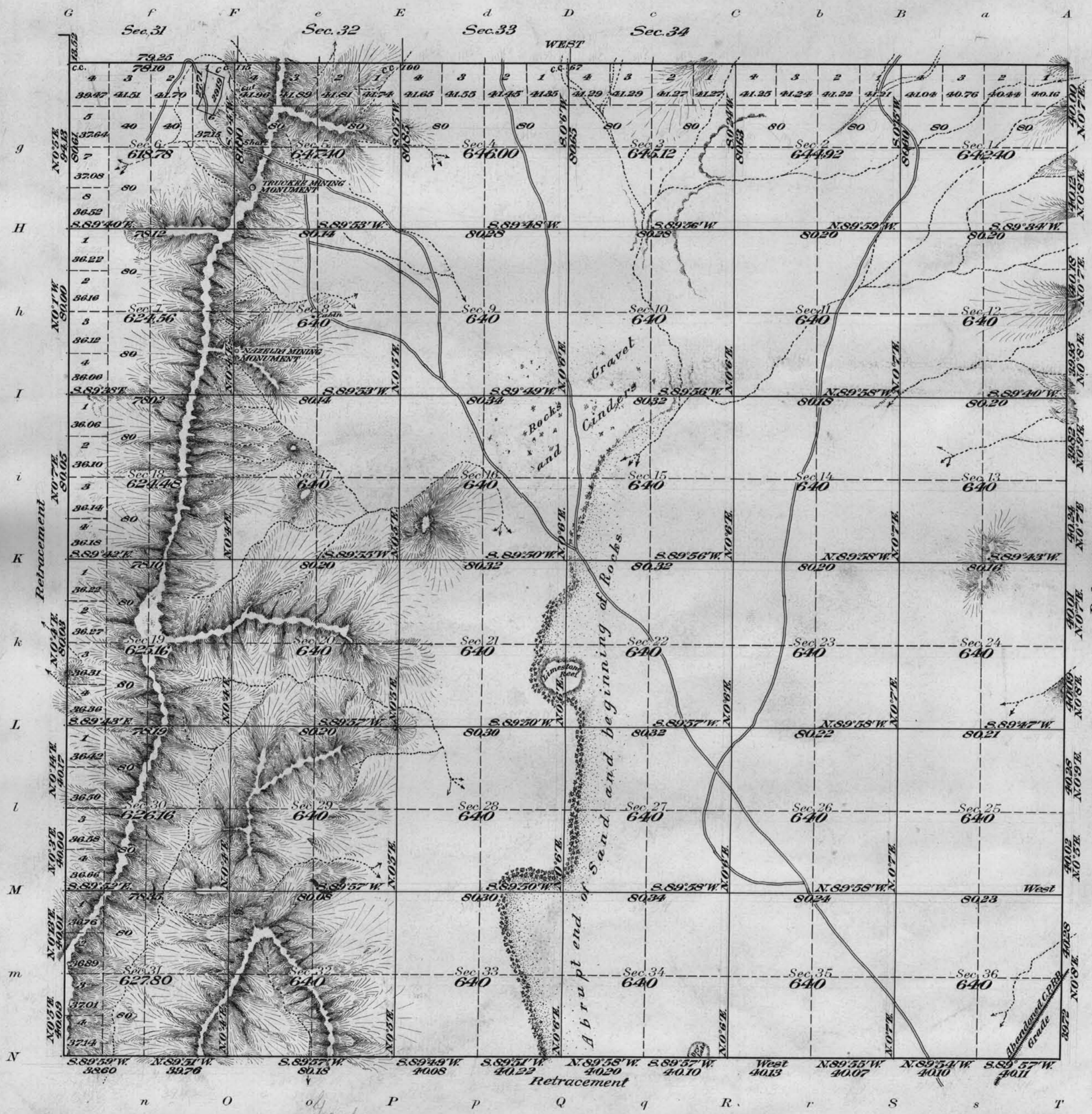


Township N<sup>o</sup> 23 North, Range N<sup>o</sup> 26 East, M<sup>t</sup> Diablo Meridian, Nevada.



TRUCKEE MINING DISTRICT  
 Sur. No. 2919 Anglo-Saxon Lode

MINERAL LAND  
 Sections 5, 6, 7, 8, 17, 18 and part of 19

Areas in Acres	
Public Land	11480.34
Indian Reservation	
Indian Allotments	
Mineral Claims	
Water Surface	
C.P.R.R. Land Grant	11492.44
<b>Total Area</b>	<b>22972.78</b>

Scale 40 Chains to an inch  
 Mean Magnetic Declination 18° E.  
 Latitude 39° 48' N.  
 Longitude 118° 59' 40" W.

Surveys Designated	By Whom Surveyed	Contract		Amount of Surveys		When Surveyed	
		No.	Date	Mls.	chs.	begun	Completed
North City	W.H. Craige & W.O. Secor	13	August 11, 1911	5	79	25	Sept. 11, 1911
South " Retracem <sup>t</sup>	"	"	"	5	79	55	September 6, 1911
East & West City Retracem <sup>t</sup>	"	"	"	12	01	67	August 22, '11, Sept. 10, 1911
Subdivisions	"	"	"	60	00	43	Sept. 13, 1911 " 23, "

The above map of Township No. 23 North Range No. 26 East of the M<sup>t</sup> Diablo Meridian Nevada is strictly conformable to the field notes of the survey thereof on file in this office, which have been examined and approved

U.S. Surveyor General's Office.  
 Reno, Nevada, June 26, 1912.

*Matthew Kyle*  
 Surveyor General.