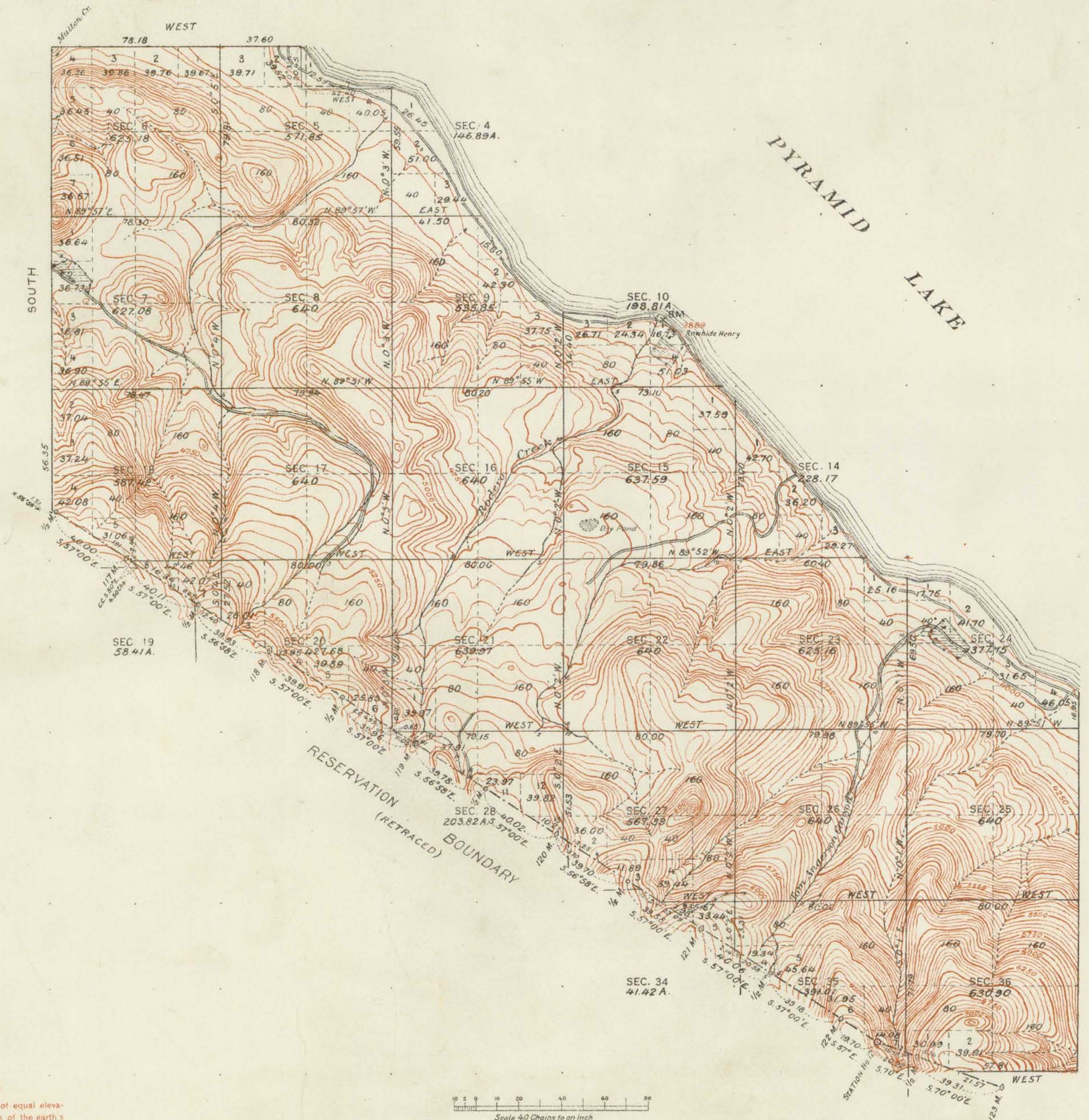


TOWNSHIP NO. 23 NORTH, RANGE NO. 22 EAST OF MOUNT DIABLO MERIDIAN, NEVADA.
PYRAMID LAKE INDIAN RESERVATION



Contour interval 50 feet

Note: Curved lines or contours, are lines of equal elevation, and represent approximately the form of the earth's surface and the altitude above sea level.

SURVEYS DESIGNATED	BY WHOM SURVEYED	AMOUNT OF SURVEYS CHS. LKS.	WHEN SURVEYED
STANDARD LINES	G. P. HARRINGTON		JUNE 12, JULY 9, 1911
TOWNSHIP	"		JULY 10-17, 1911
SUBDIVISION	"		JULY 18, 1911
MEANDER	"		JUNE 8, JULY 7, 1911
BOUNDARY	"		JULY 10-17, 1911
CONNECTIONS	"		

A. F. DUNNINGTON, Topographer in charge. Instructions April 27, 1911.

TOTAL NUMBER OF ACRES 11961.69

THE ABOVE MAP OF TOWNSHIP NO. 23 NORTH RANGE NO. 22 EAST OF MOUNT DIABLO MERIDIAN, NEVADA, IS STRICTLY CONFORMABLE TO THE FIELD NOTES OF THE SURVEY THEREOF ON FILE IN THIS OFFICE, WHICH HAVE BEEN EXAMINED AND APPROVED

U. S. GENERAL LAND OFFICE

WASHINGTON D C
MAY 15, 1913

Fred W. Smith
Commissioner.