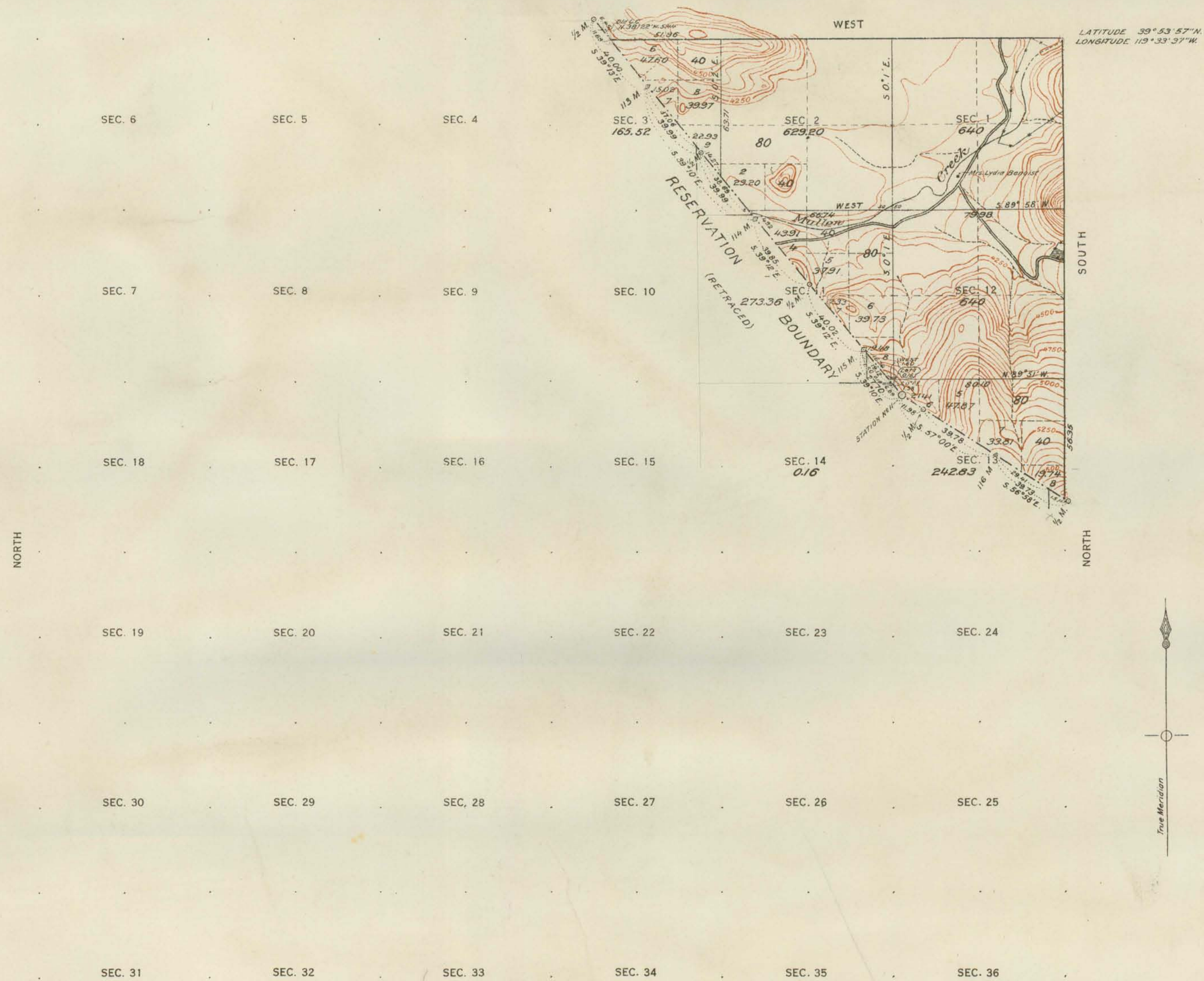
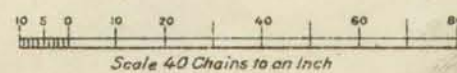


TOWNSHIP NO. 23 NORTH, RANGE NO. 21 EAST OF MOUNT DIABLO MERIDIAN, NEVADA.
PYRAMID LAKE INDIAN RESERVATION



Contour interval 100 feet

Note: Curved lines or contours, are lines of equal elevation, and represent approximately the form of the earth's surface and the altitude above sea level.



TOTAL NUMBER OF ACRES 2591.07

SURVEYS DESIGNATED	BY WHOM SURVEYED	AMOUNT OF SURVEYS M. CHS. LKS.	WHEN SURVEYED
STANDARD LINES	GUY P. HARRINGTON		JULY 14, 15, 1911.
TOWNSHIP "	" " "		" 20, "
SUBDIVISION "	" " "		" 7, "
MEANDER "	" " "		" 20, "
BOUNDARY "	" " "		
CONNECTIONS	" " "		

A. F. DUNNINGTON, Topographer in charge. Instructions April 27, 1911.

THE ABOVE MAP OF TOWNSHIP NO. 23 NORTH, RANGE NO. 21 EAST OF MOUNT DIABLO MERIDIAN, NEVADA, IS STRICTLY CONFORMABLE TO THE FIELD NOTES OF THE SURVEY THEREOF ON FILE IN THIS OFFICE, WHICH HAVE BEEN EXAMINED AND APPROVED.

U. S. GENERAL LAND OFFICE

WASHINGTON, D. C.
MAY 15, 1913.

Fred Dunnington
Commissioner.