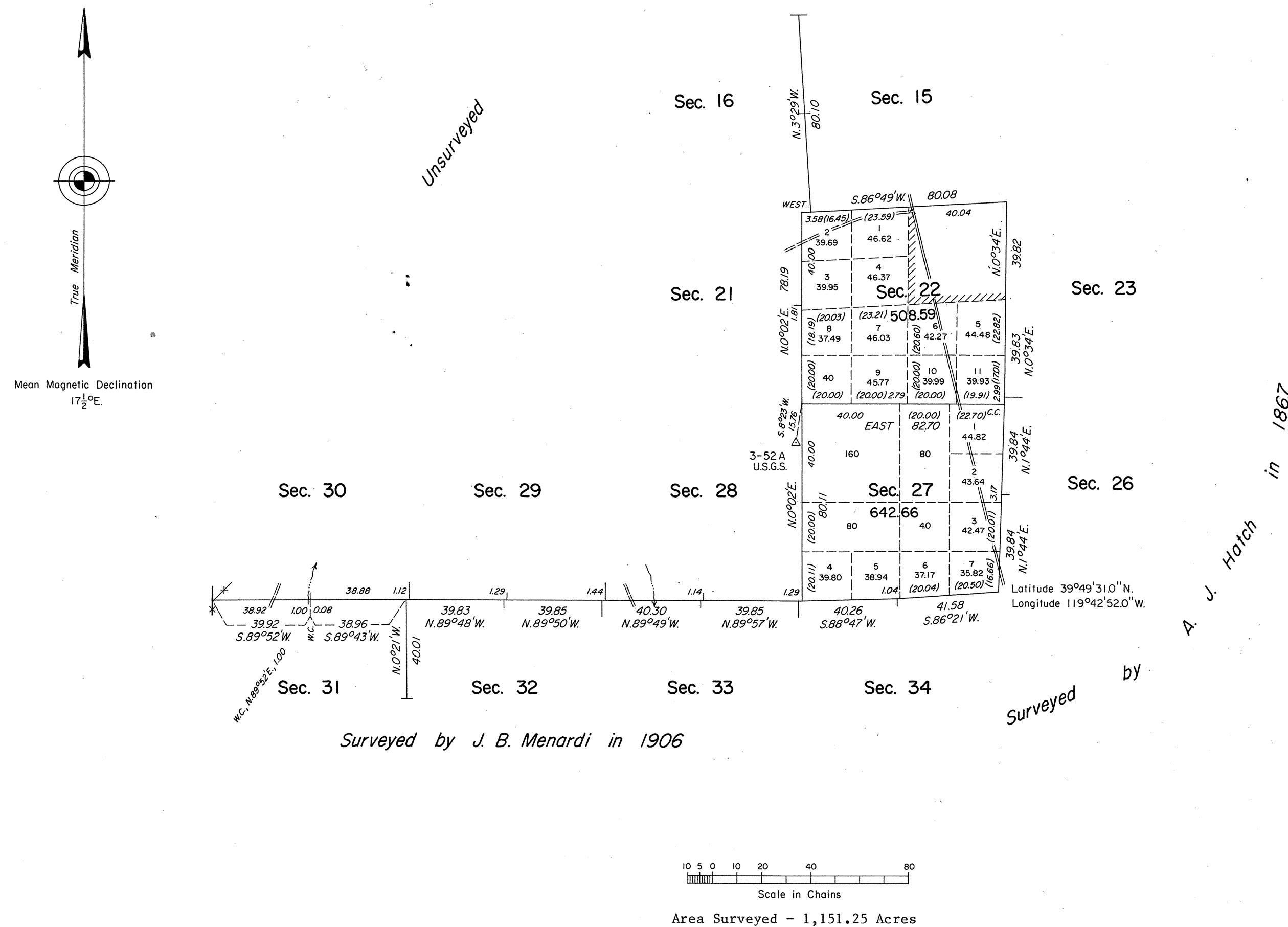


TOWNSHIP 23 NORTH, RANGE 20 EAST, OF THE MOUNT DIABLO MERIDIAN, NEVADA

DEPENDENT RESURVEY AND SURVEY



A history of surveys is contained in the field notes.

This plat represents a dependent resurvey of a portion of the subdivisional lines, designed to restore the corners in their true original locations according to the best available evidence, and the completion survey of sections 22 and 27, T. 23 N., R. 20 E., Mount Diablo Meridian, Nevada.

Except as indicated hereon, lottings and areas are as shown on the plats approved January 15, 1868 and February 19, 1907.

Survey executed by Neil R. Forsyth, Cadastral Surveyor, beginning January 25, 1980, and completed February 13, 1980, pursuant to Special Instructions dated December 5, 1979, for Group No. 580, Nevada.

UNITED STATES DEPARTMENT OF THE INTERIOR
BUREAU OF LAND MANAGEMENT
Denver, Colorado March 10, 1980

This plat is strictly conformable to the approved field notes, and the survey, having been correctly executed in accordance with the requirements of law and the regulations of this Bureau, is hereby accepted.

For the Director

J. D. Barker

Chief, Cadastral Survey
Examination and Approval Staff