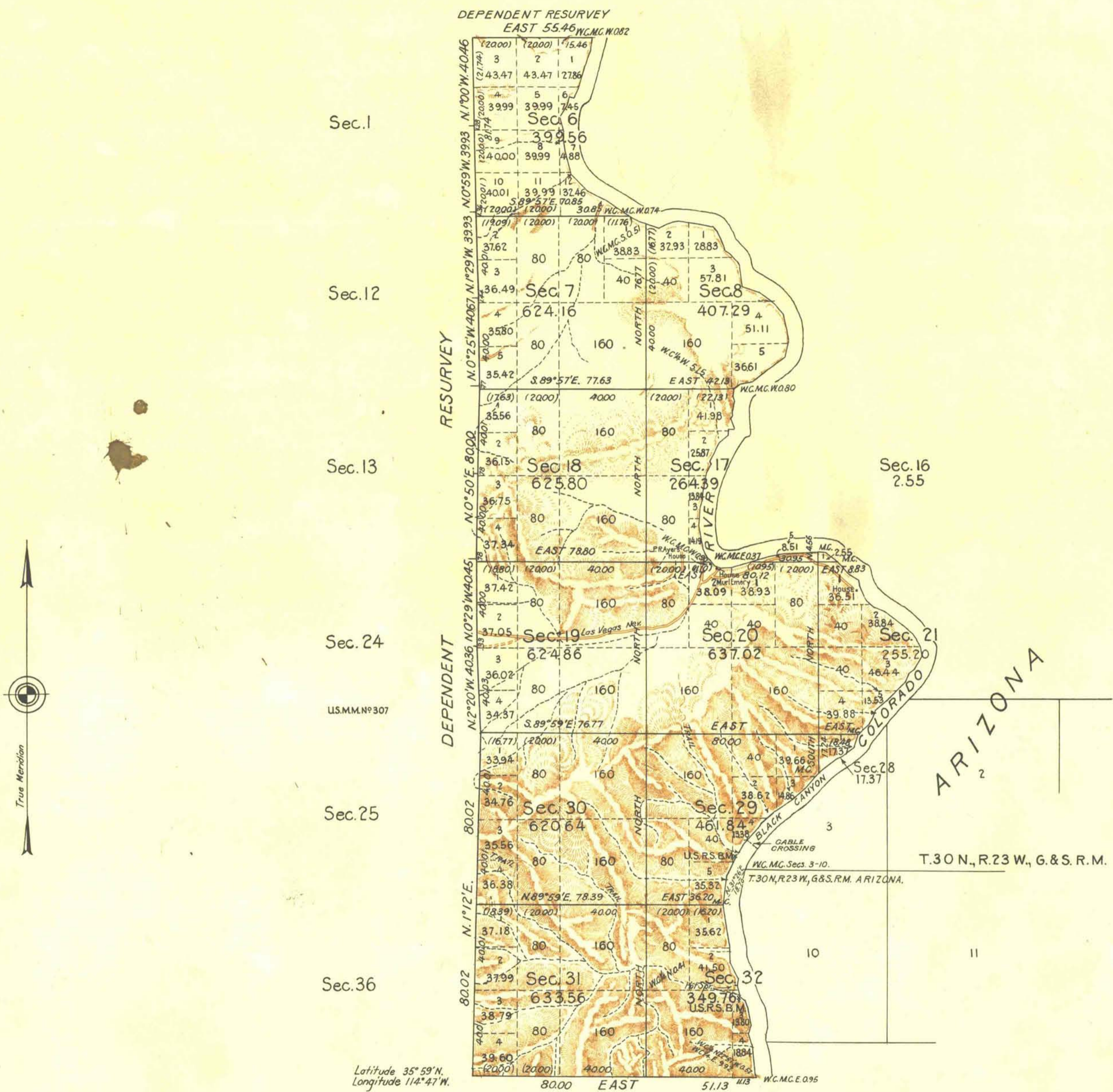


TOWNSHIP N°22 SOUTH, RANGE N°65 EAST MOUNT DIABLO MERIDIAN, NEVADA.



LINES DESIGNATED	BY WHOM SURVEYED	GROUP		MILEAGE		WHEN SURVEYED	
		N°	DATE	MLS.	CHS.	BEGUN	COMPLETED
Exterior	Carl S. Swanholm	161	June 12, 1929.	8	28.43	Mar. 22, 1930	April 24, 1930.
Subdivisional	" " "	"	" " "	14	26.77	Apr. 3, 1930	" 23, "
Meander	" " "	"	" " "	8	55.19	" 4 "	" 24, "

Office of U.S. Supervisor of Surveys
Denver, Colorado, Oct. 8, 1930.
The above plat of Township No. 22 South, Range No. 65 East of the Mount Diablo Meridian, Nevada is strictly conformable to the field notes of the survey thereof which have been examined and approved.

Wm. A. Johnson
U.S. Supervisor of Surveys.

DEPARTMENT OF THE INTERIOR
GENERAL LAND OFFICE
Washington, D.C., October 14, 1930
The survey represented by this plat having been correctly executed in accordance with the requirements of law and the regulations of this office is hereby accepted.

Wm. C. Staveland
Assistant Commissioner.