

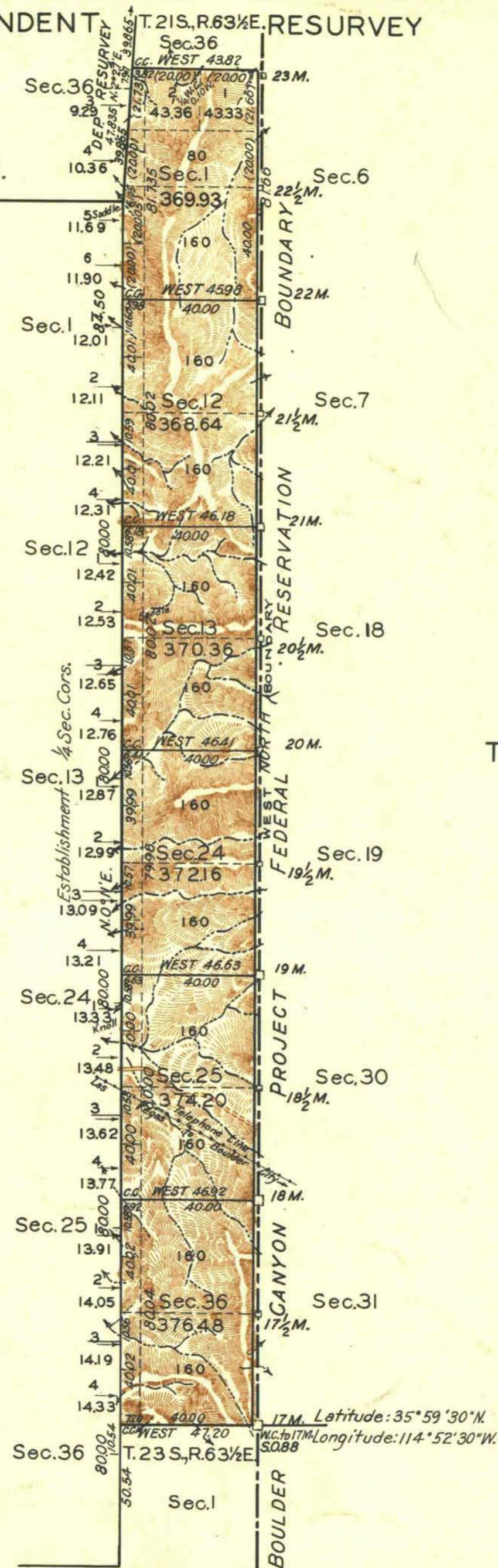
TOWNSHIP N°22 SOUTH, RANGE N°63½ EAST OF THE MOUNT DIABLO MERIDIAN, NEVADA.
INDEPENDENT T.21S.,R.63E. RESURVEY



Scale: 40 Chains to an Inch.

Area Surveyed, 2,231.77 Acres.

LINES DESIGNATED	BY WHOM SURVEYED	GROUP		MILEAGE		WHEN SURVEYED	
		Nº	DATE	MLS.	CHS.	BEGUN	COMPLETED
Exterior N.S. and portion W. bdy.	Carl S. Swanholm	169	Mar. 12, 1931	1	57.22	March 12, 1931.	June 11, 1931.
Subdivisional	" " "	"	March 12, 1931.	2	72.12	March 21, "	June 14, "
Miscellaneous	" " "	"	" " "	5	1.47	" " "	" " "



Note: This resurvey was executed under authority of letter 1403991-E-WHR dated March 9, 1931.

Office of U.S. Supervisor of Surveys
Denver, Colorado, March 1, 1933.
The above plat of Township No. 22 South, Range No. 63½ East of the Mount Diablo Base and Meridian, Nevada, is strictly conformable to the field notes of the survey thereof which have been examined and approved.

Wm. H. Cannon
U.S. Supervisor of Surveys.

DEPARTMENT OF THE INTERIOR
GENERAL LAND OFFICE
Washington, D.C., April 10, 1933.
The survey represented by this plat having been correctly executed in accordance with the requirements of law and the regulations of this office is hereby accepted.

J. C. Gandy
Acting Assistant Commissioner.