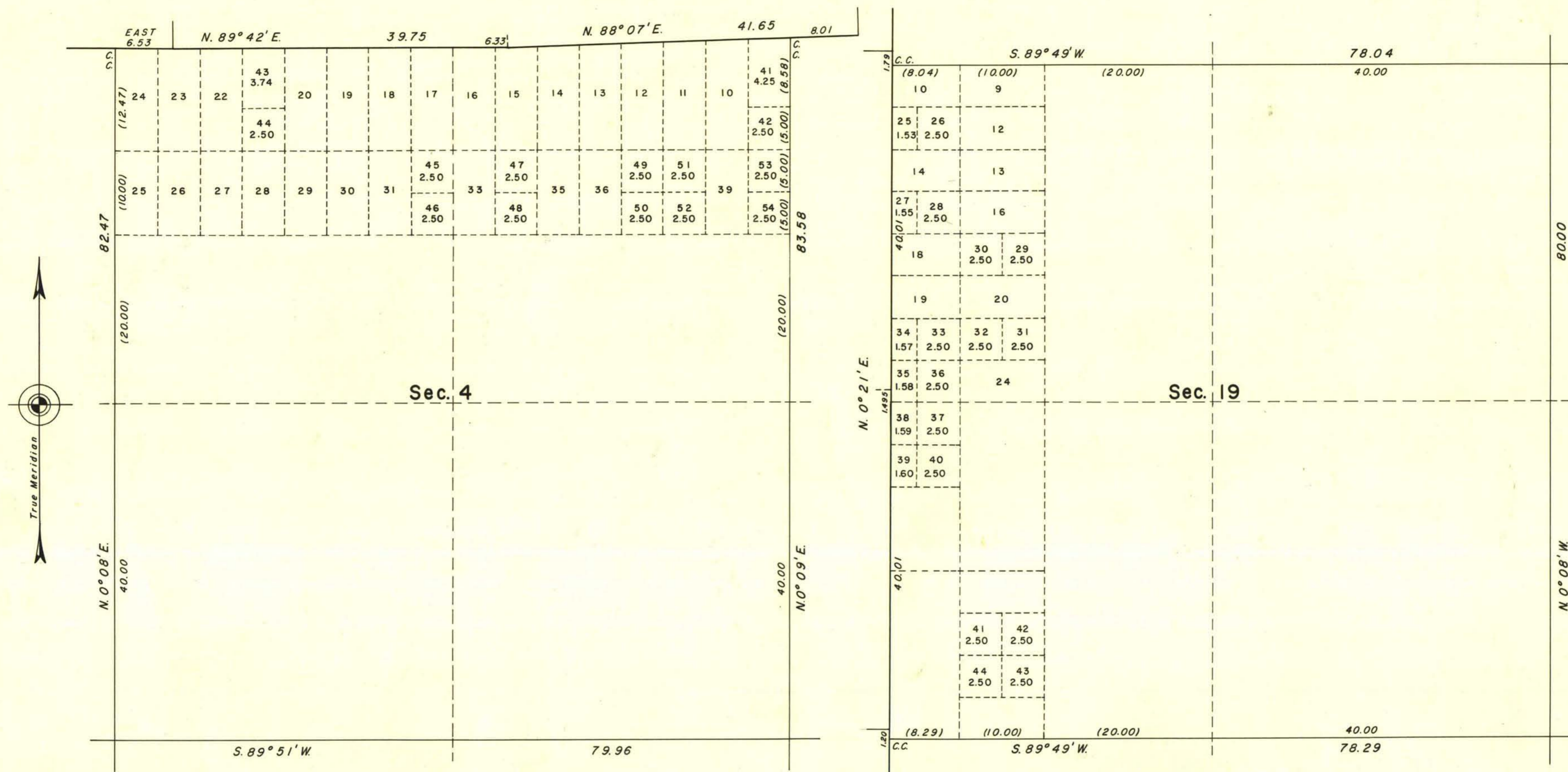


TOWNSHIP 22 SOUTH, RANGE 63 EAST, MOUNT DIABLO MERIDIAN, NEVADA
SUPPLEMENTAL PLAT OF SECTIONS 4 AND 19



This plat showing amended lottings in sections 4 and 19, T. 22 S., R. 63 E., Mt. Diablo Meridian, Nevada is based upon plats accepted April 10, 1933, January 31, 1950, and October 9, 1953.

UNITED STATES DEPARTMENT OF THE INTERIOR
BUREAU OF LAND MANAGEMENT
Washington, D. C. December 24, 1958

This plat showing amended lottings, having been correctly prepared in accordance with the regulations, is hereby accepted.

For the Director
Earl G. Harrington
Cadastral Engineering Staff Officer

P.A.S.

N.S. *M.H.*

2829-C

T22S, R63E