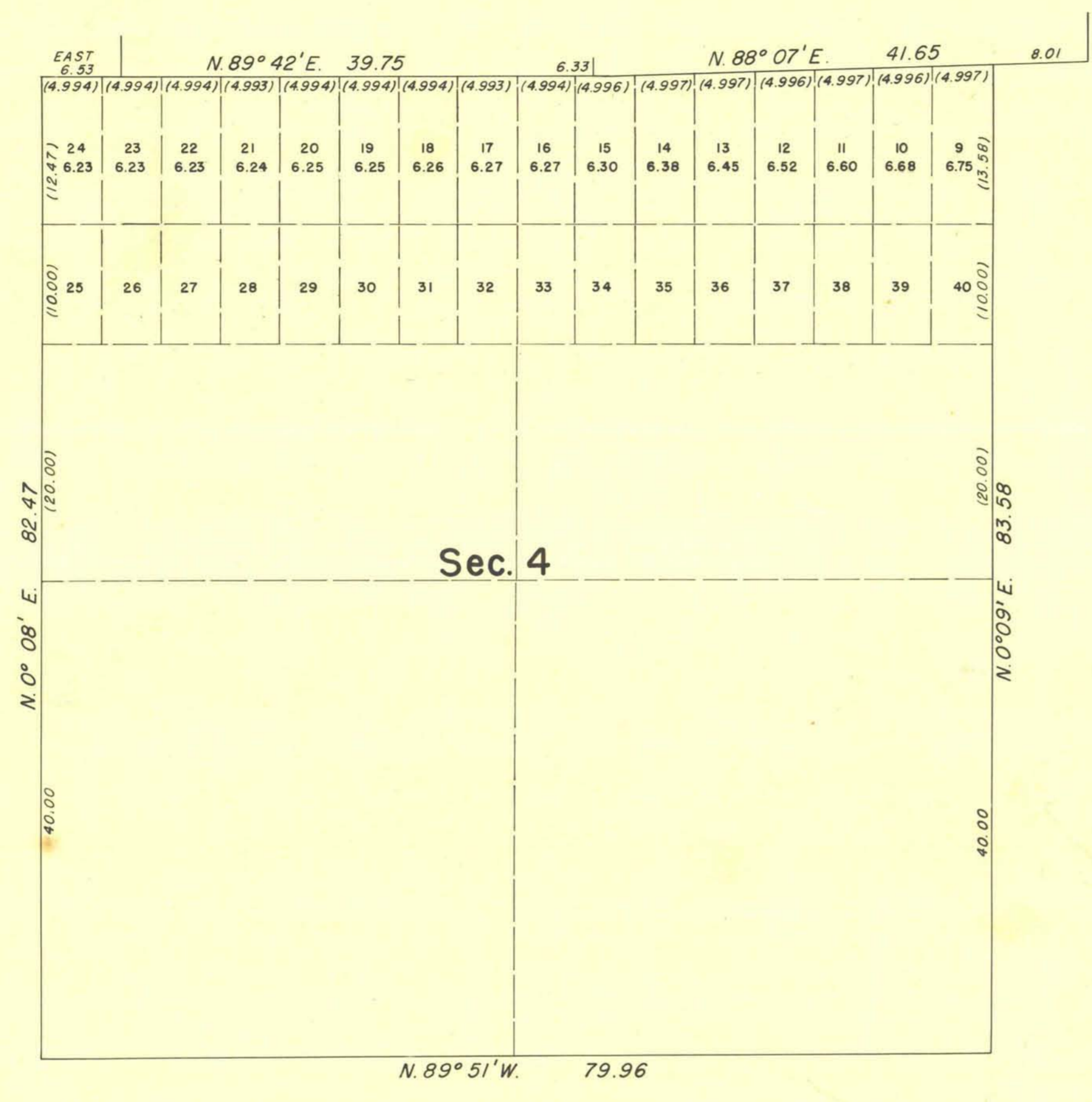
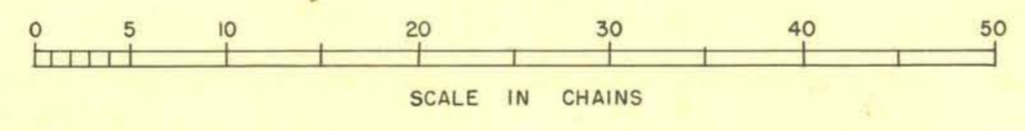


TOWNSHIP NO. 22 SOUTH., RANGE NO. 63 EAST OF THE MOUNT DIABLO MERIDIAN, NEVADA.
SUPPLEMENTAL PLAT



This plat, showing amended lottings, is based on the plat approved March 1, 1953.
Lot Nos. 25 to 40, inclusive, contain five acres each.

plat approved
March 1, 1953



UNITED STATES DEPARTMENT OF THE INTERIOR
BUREAU OF LAND MANAGEMENT
Washington, D. C., October 9, 1953

This plat, showing amended lottings, having been correctly prepared in accordance with the regulations, is hereby accepted.

For the Director
Earl G. Harrington
Chief, Division of
Cadastral Engineering

T. 22 S., R. 63 E.

5877B.