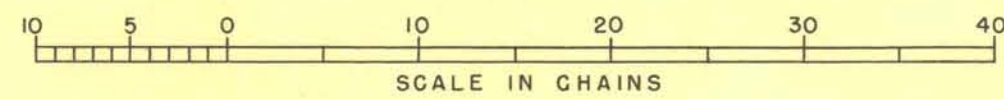
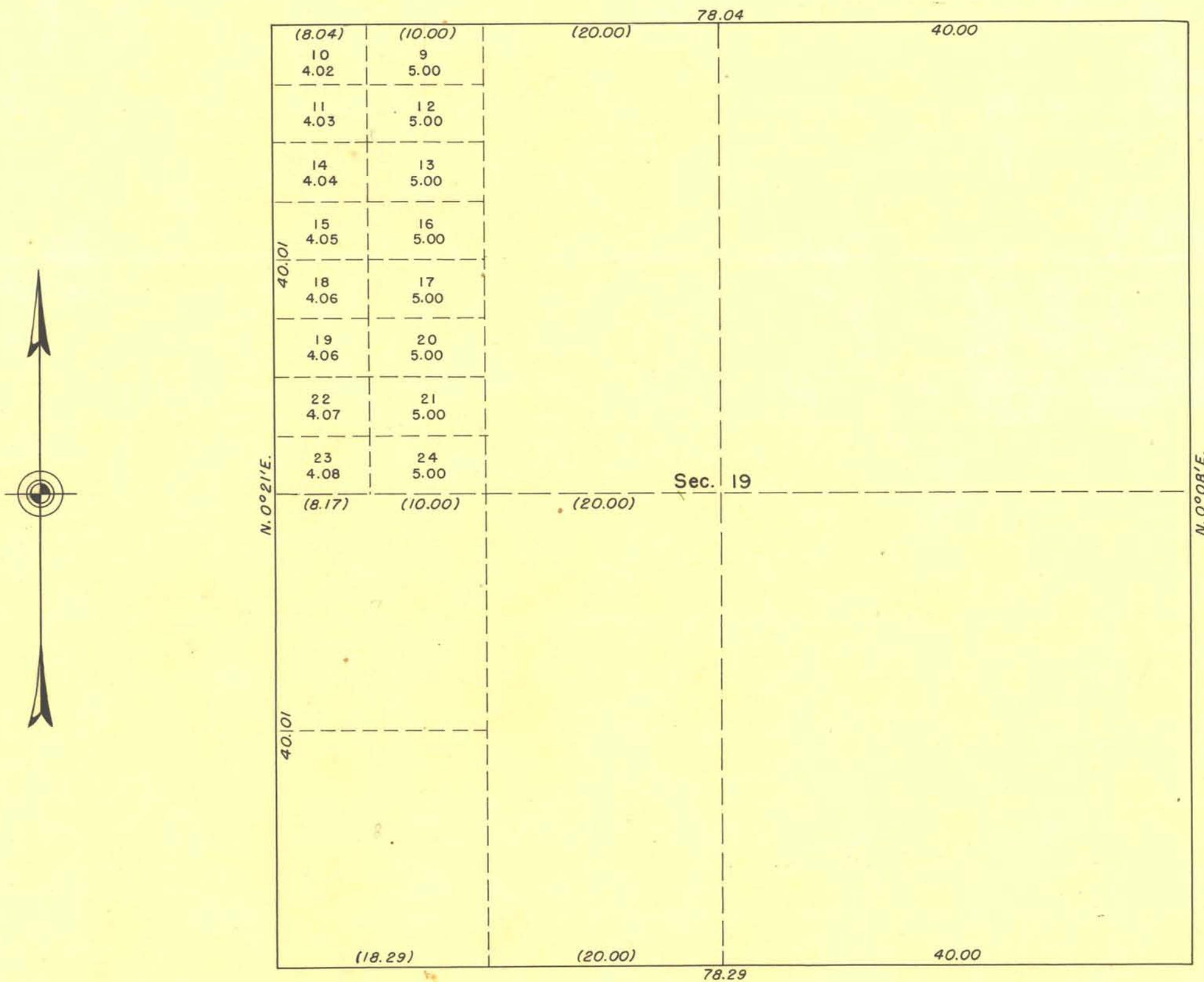


TOWNSHIP 22 SOUTH, RANGE 63 EAST, MOUNT DIABLO MERIDIAN, NEVADA  
SUPPLEMENTAL PLAT OF SEC. 19



UNITED STATES  
DEPARTMENT OF THE INTERIOR  
BUREAU OF LAND MANAGEMENT

WASHINGTON, D. C. JANUARY 31, 1950

THIS PLAT, SHOWING AMENDED LOTTINGS, IS BASED UPON THE  
OFFICIAL RECORDS AND HAVING BEEN CORRECTLY PREPARED IN ACCORD-  
ANCE WITH THE REGULATIONS, IS HEREBY ACCEPTED.

FOR THE DIRECTOR

*William F. Richards*

CHIEF, BRANCH OF SURVEYS.