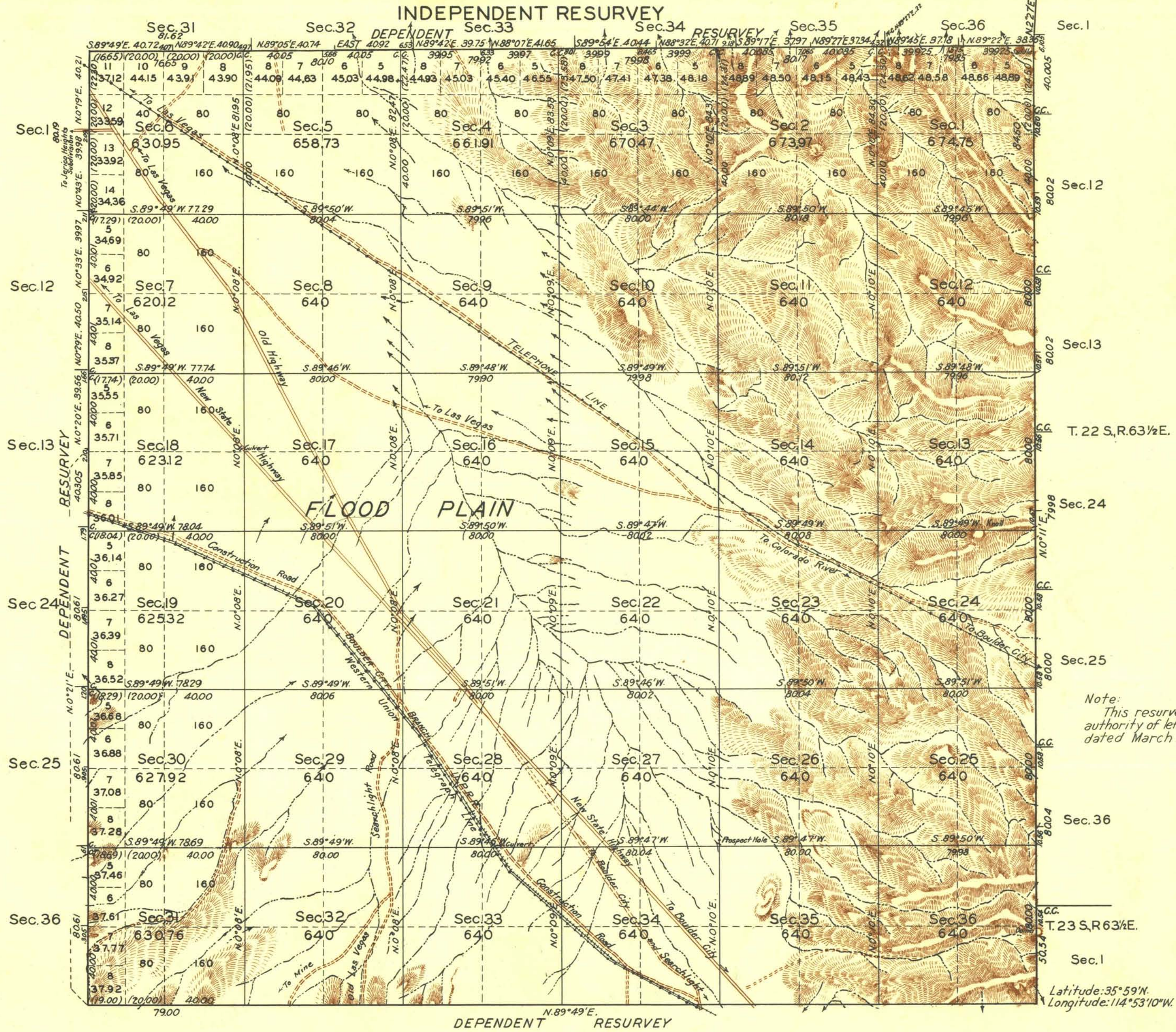


TOWNSHIP N° 22 SOUTH, RANGE N° 63 EAST OF THE MOUNT DIABLO MERIDIAN, NEVADA.



Note:
This resurvey was executed under authority of letter 1403991-E-WHR dated March 9, 1931.

Latitude: 35° 59' N.
Longitude: 114° 53' 10" W.

Scale: 40 Chains to an Inch. Area Surveyed 23098.02 Acres.

LINES DESIGNATED	BY WHOM SURVEYED	GROUP NO.	DATE		MILEAGE		WHEN SURVEYED	
			NO.	DATE	MLS.	CHS.	BEGUN	COMPLETED
Exterior-N.S.E.W.	Carl S. Swanholm	169	March 12, 1931.		24	2.53	March 12, 1931	June 11, 1931
Subdivisional	C.S. Swanholm-R.C. Yundt	"	" " "		60	7.0	" " "	June 11, "
Closings	" "	"	" " "		1	2.59	" " "	" " "

Office of U.S. Supervisor of Surveys.
Denver, Colorado, March 1, 1933.
The above plat of Township No. 22 South, Range No. 63 East of the Mount Diablo Meridian, Nevada, is strictly conformable to the field notes of the survey thereof which have been examined and approved.

Wm. J. Johnson
U.S. Supervisor of Surveys.

DEPARTMENT OF THE INTERIOR
GENERAL LAND OFFICE
Washington, D.C., April 10, 1933.
The survey represented by this plat having been correctly executed in accordance with the requirements of law and the regulations of this office, is hereby accepted.

J. C. ...
Acting Assistant Commissioner.

Comput. A.N.-R.C.Y.
A.S.M.
A.R.S.

61.
P.M.
10
22 S-63E.