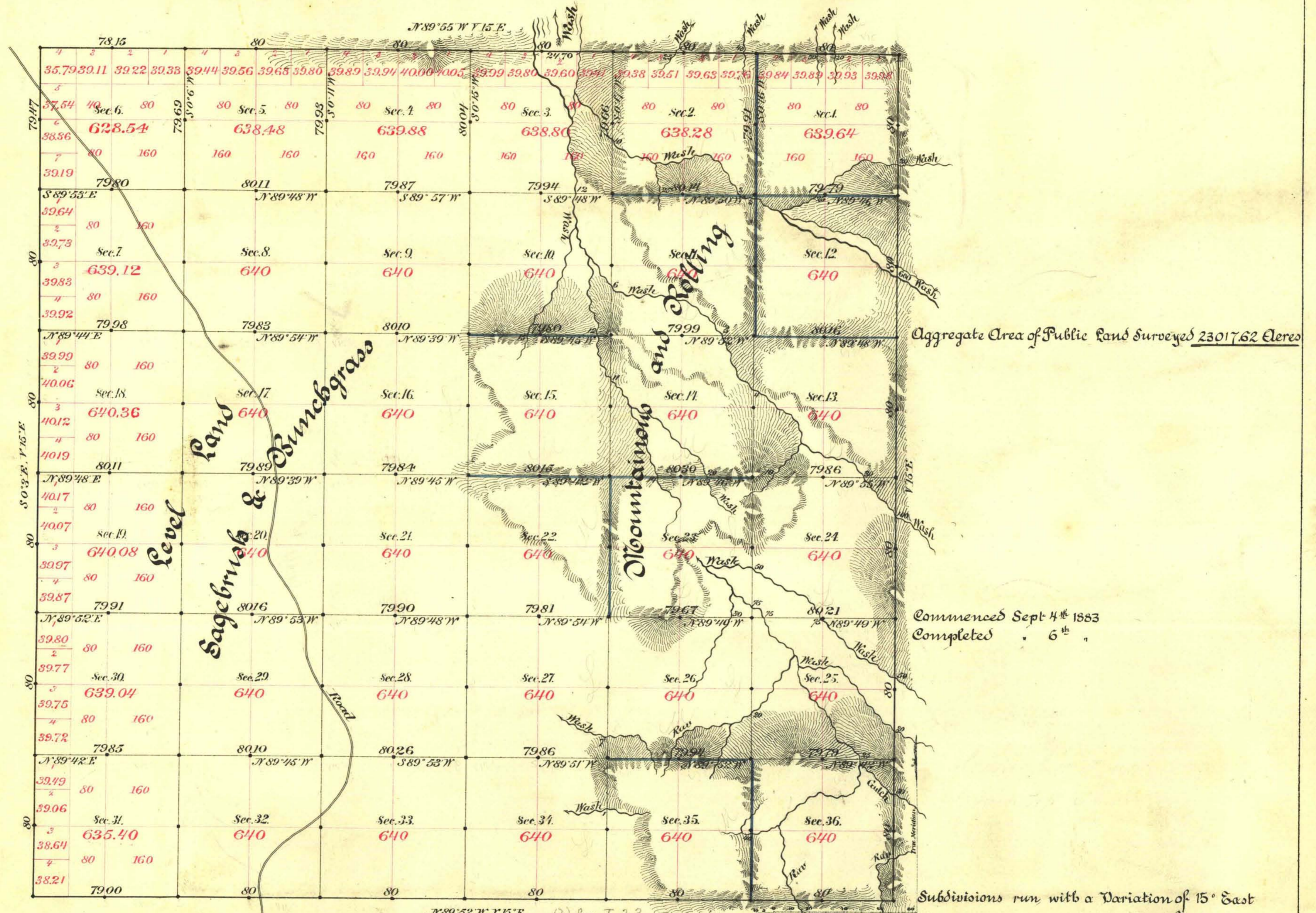


TOWNSHIP N^o 22 SOUTH RANGE N^o 63 EAST

MOUNT DIABLO MERIDIAN



Aggregate Area of Public Land Surveyed 23017.62 Acres

Commenced Sept 4th 1883
Completed . . . 6th . . .

Subdivisions run with a Variation of 15° East

Surveys Disputed.	By Whom Surveyed.	Date of Contract.	Amount of surveys.	When Surveyed.	N ^o of Corn
Township lines	J. A. Moagee	July 19 th 1882	23 - 16 - 8 ^{1/2}	1883	14-9
Section . . . black	"	"	48 - 78 - 10	Sept	"
blue	"	"	11 - 00 - 19	"	"

The above Map of Township No. 22 South of Range No. 63 East Mount Diablo Meridian is strictly conformable to the field notes of the survey thereof on file in this Office, which have been examined and approved.

Surveyor General's Office, Reno, *C. C. Downing*
February 6th 1884 U.S. Surv^r Gen^l of Nevada.