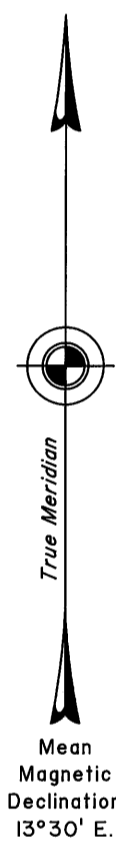


TOWNSHIP 22 SOUTH, RANGE 62 EAST, OF THE MOUNT DIABLO MERIDIAN, NEVADA
DEPENDENT RESURVEY



Resurveyed by
E. Voigt and J. W. Hardison
in 1942-43

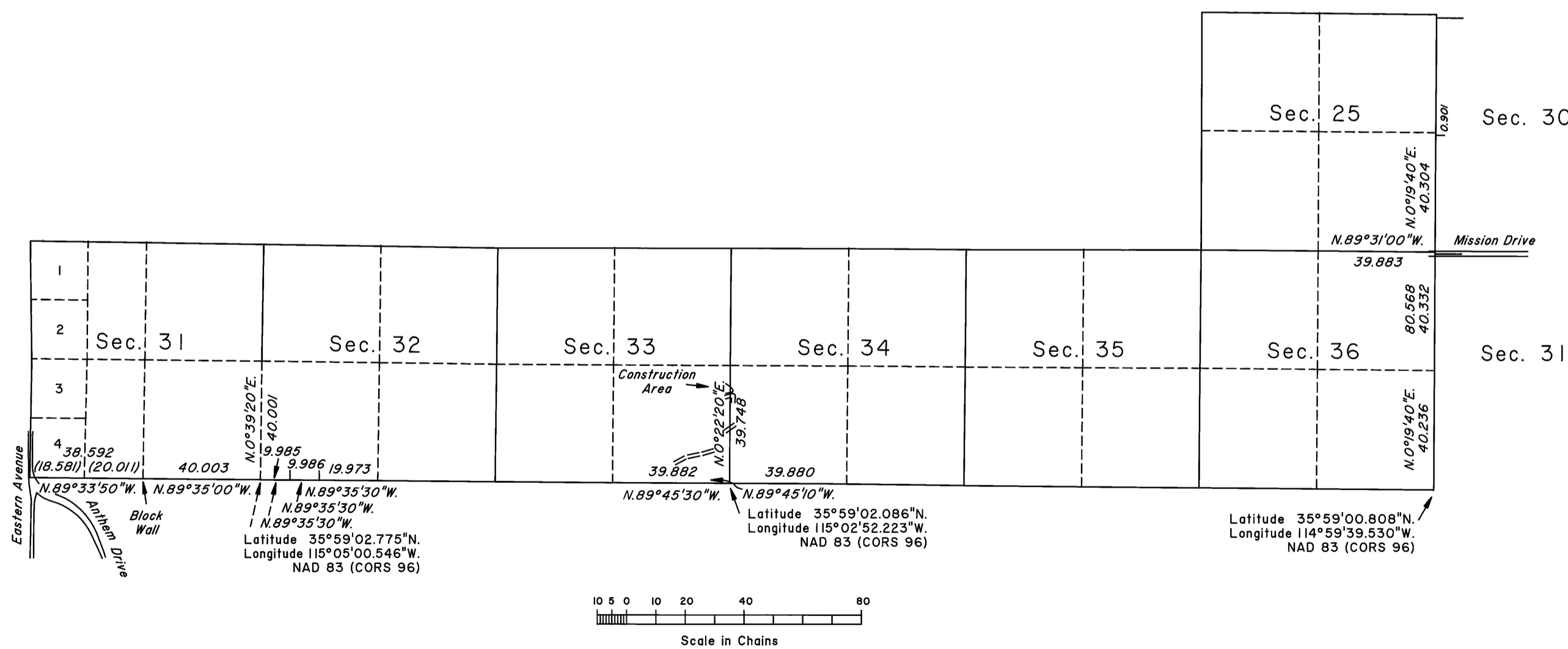
A history of surveys is contained in the field notes.

This plat represents the dependent resurvey of portions of the south and east boundaries and a portion of the subdivisional lines of Township 22 South, Range 62 East, Mount Diablo Meridian, Nevada, designed to restore the corners in their true original locations according to the best available evidence.

Lottings and areas are as shown on the plat approved February 6, 1884, and the plat approved August 18, 1943 and accepted August 28, 1943.

For those surveyed lines not showing bearings and distances, refer to the official records of 1933 and 1943.

Survey executed by Earnest E. Schaaf, Nevada Professional Land Surveyor, and Brock R. Clifford, Cadastral Surveyor, beginning May 1, 2007, and completed June 20, 2008, pursuant to Special Instructions dated March 16, 2007, for Group No. 849, Nevada.



UNITED STATES DEPARTMENT OF THE INTERIOR
BUREAU OF LAND MANAGEMENT

Reno, Nevada August 4, 2009

This plat is strictly conformable to the approved field notes, and the survey, having been correctly executed in accordance with the requirements of law and the regulations of this Bureau, is hereby accepted.

For the Director

Chief Cadastral Surveyor, Nevada

