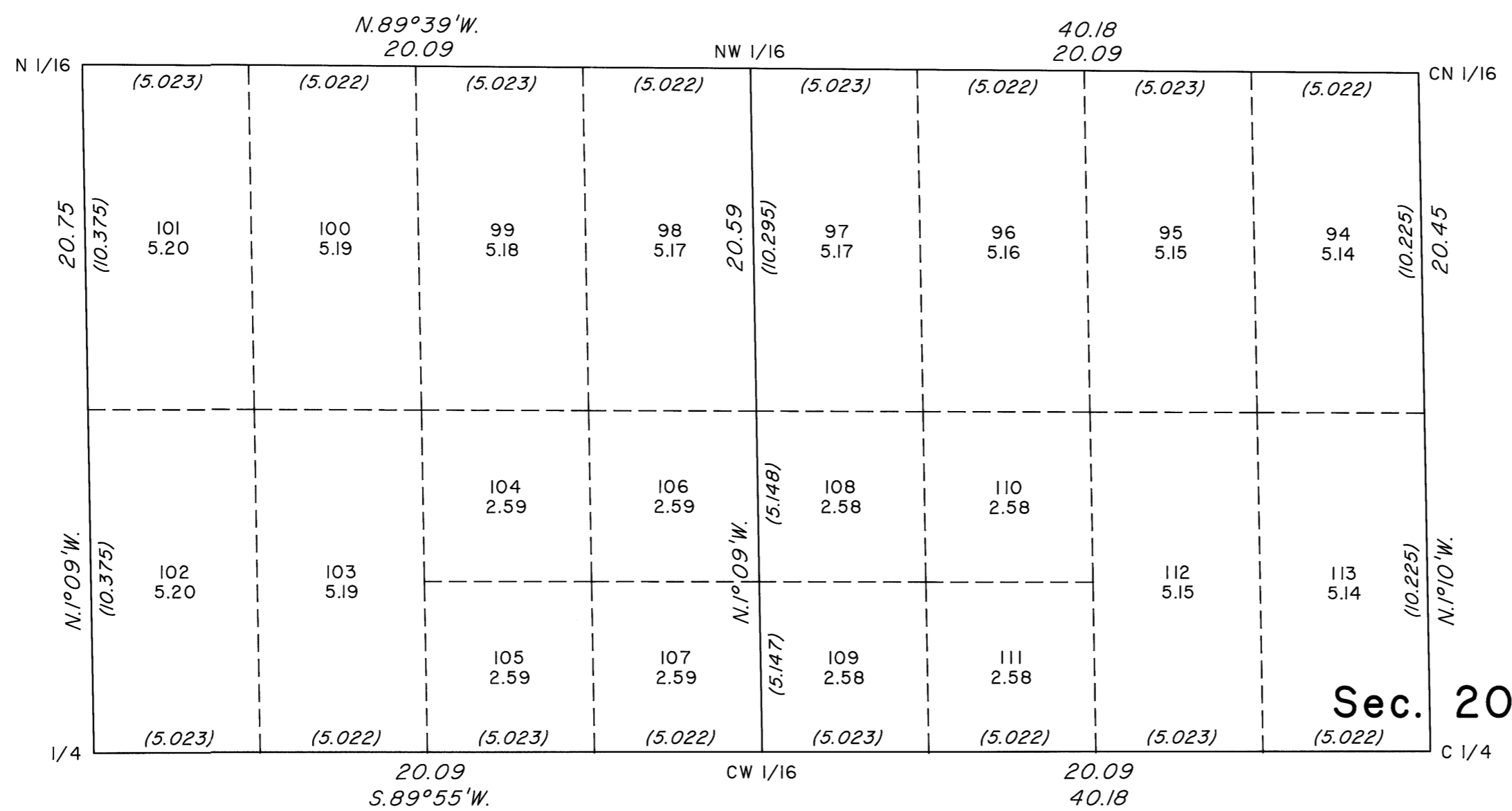


TOWNSHIP 22 SOUTH, RANGE 61 EAST, OF THE MOUNT DIABLO MERIDIAN, NEVADA  
SUPPLEMENTAL PLAT OF THE SW1/4 NW1/4 AND THE SE1/4 NW1/4 OF SECTION 20



This plat, showing a subdivision of lots 39, 40, 41, and 42, and revised areas for lots 29 through 38, and lots 43 and 44 in the SW1/4 NW1/4 and the SE1/4 NW1/4 of section 20, T.22S., R.61E., Mount Diablo Meridian, Nevada, is based upon the plat approved November 23, 1881, the plat in 7 sheets accepted February 18, 1953 and the supplemental plat accepted June 27, 1955.

Certain new lottings shown on this plat are created on patented lands where split interest occurs. The new lots created on patented lands refer to Federal Estate only.

UNITED STATES DEPARTMENT OF THE INTERIOR  
BUREAU OF LAND MANAGEMENT

Reno, Nevada May 20, 2003

This plat, showing amended lottings, is based upon the official records, and having been correctly prepared in accordance with the regulations of this Bureau, is hereby accepted.

For the Director

Chief Cadastral Surveyor, Nevada

