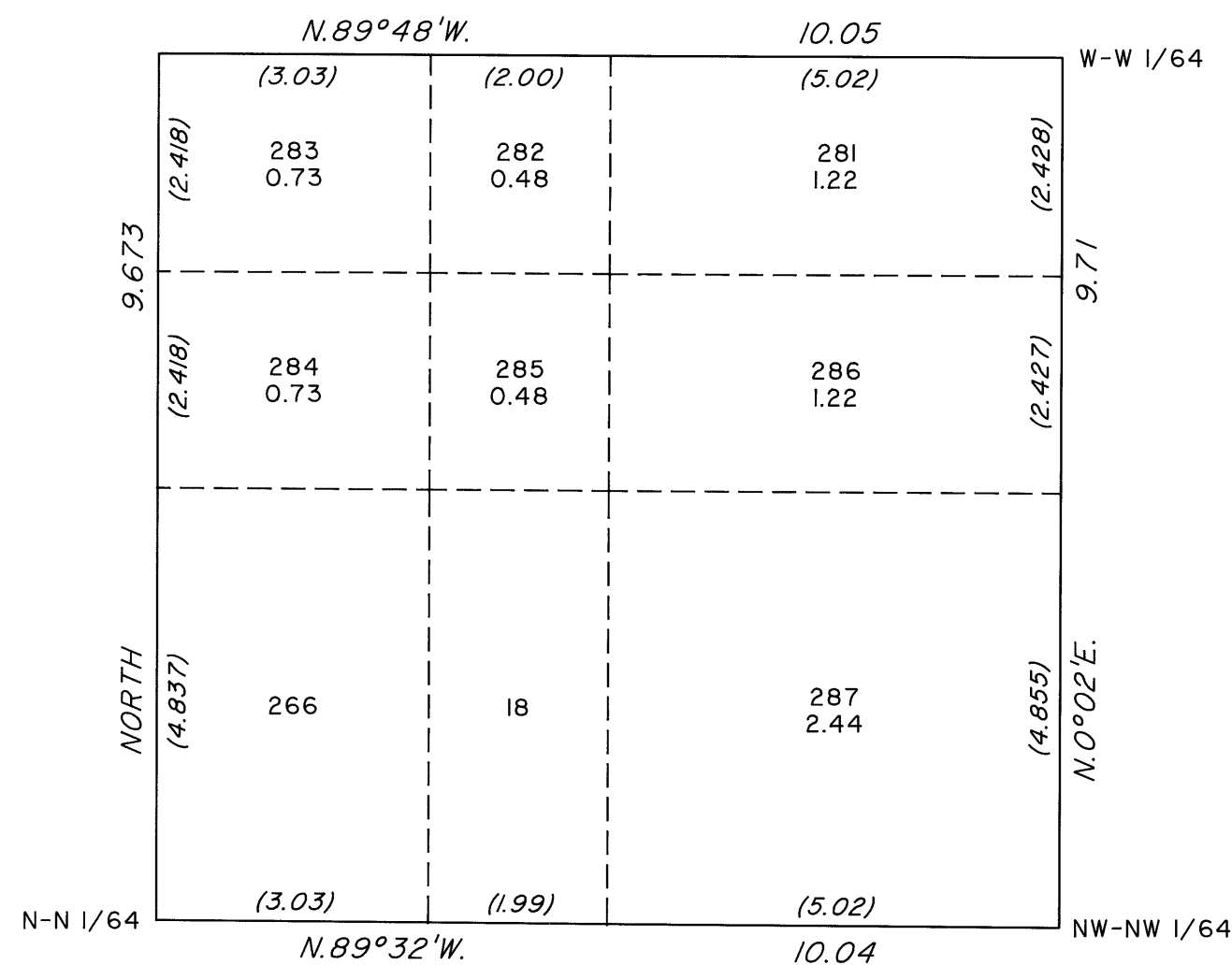
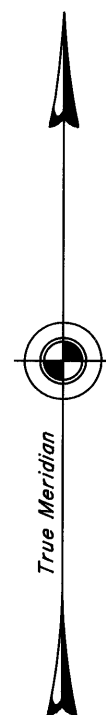


TOWNSHIP 22 SOUTH, RANGE 61 EAST, OF THE MOUNT DIABLO MERIDIAN, NEVADA
SUPPLEMENTAL PLAT OF THE NW1/4 NW1/4 NW1/4 OF SECTION 16



This plat, showing a subdivision of lots 15, 16 and 265, and a revised area for lot 19, in the NW1/4 NW1/4 NW1/4 of section 16, T.22S., R.61E., Mount Diablo Meridian, Nevada, is based upon the plat approved November 23, 1881, the plat in 7 sheets accepted February 18, 1953 and the supplemental plat accepted June 27, 1955.

The new lottings show on this plat are created on patented land where split interest occurs. The new lots refer to Federal Estate only.

Sec. 16

UNITED STATES DEPARTMENT OF THE INTERIOR
BUREAU OF LAND MANAGEMENT

Reno, Nevada May 20, 2003

This plat, showing amended lottings, is based upon the official records, and having been correctly prepared in accordance with the regulations of this Bureau, is hereby accepted.

For the Director

Chief Cadastral Surveyor, Nevada

