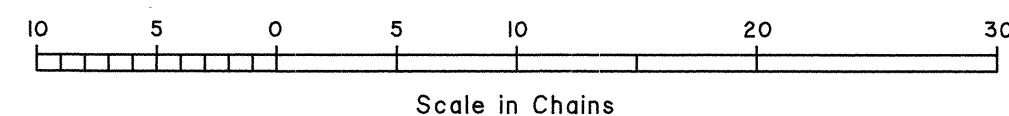
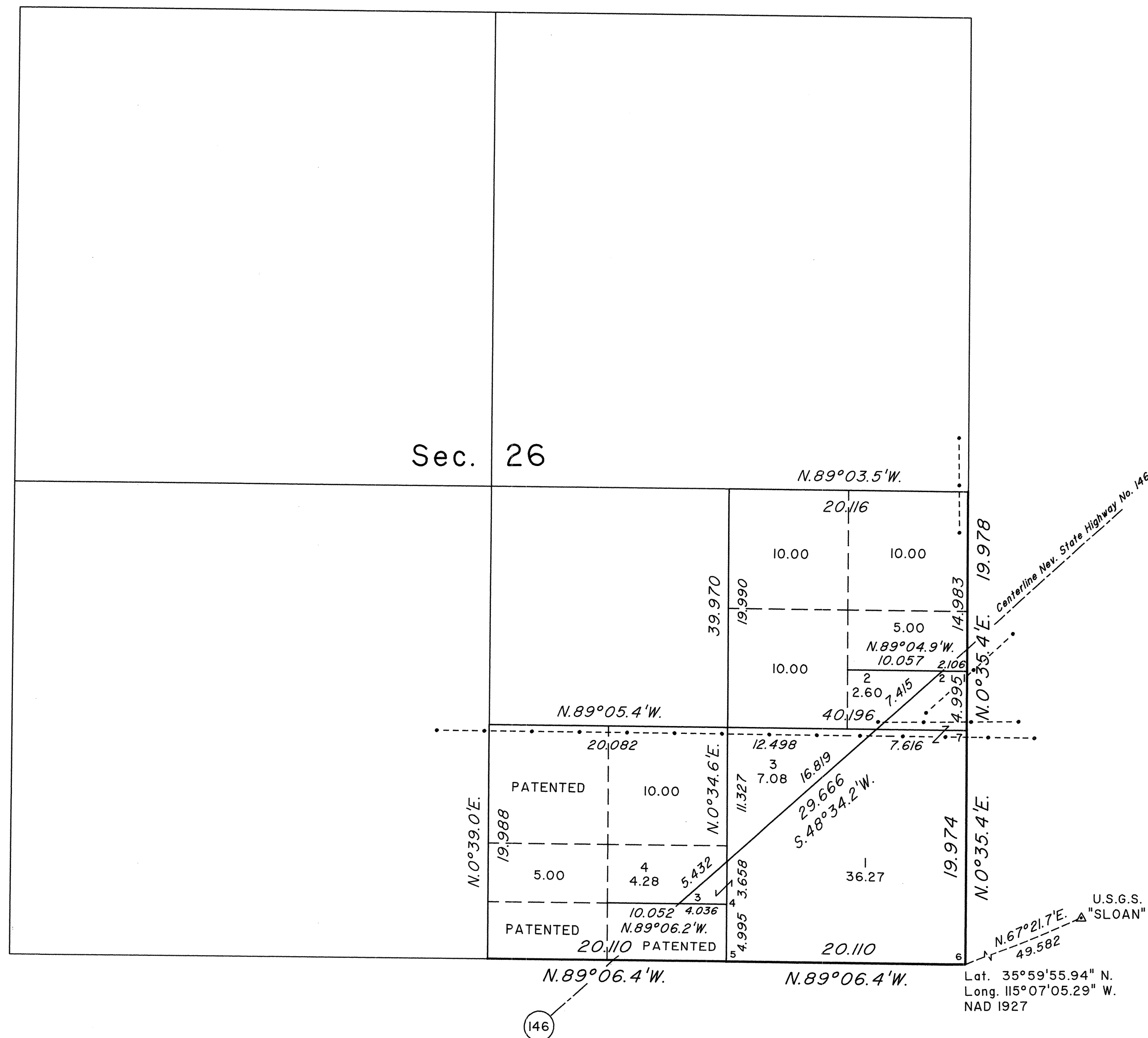
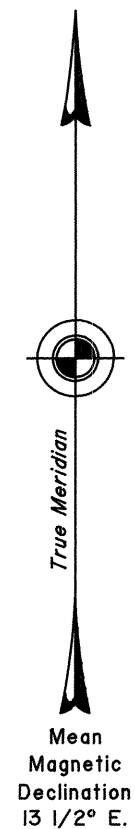


TOWNSHIP 22 SOUTH, RANGE 61 EAST, OF THE MOUNT DIABLO MERIDIAN, NEVADA
DEPENDENT RESURVEY AND SUBDIVISION



A history of surveys is contained in the field notes.

This plat represents the dependent resurvey of a portion of the subdivisional lines and a portion of the subdivision of section 26, designed to restore the corners in their true and original locations according to the best available evidence, and the subdivision of the SE 1/4 of section 26 and the metes-and-bounds survey of lot 1, section 26, Township 22 South, Range 61 East, Mount Diablo Meridian, Nevada.

Except as indicated hereon, the areas are as shown on the plat approved November 23, 1881, and the plats accepted November 6, 1956, and May 23, 1958.

For those surveyed lines not showing bearings and distances, refer to the official 1958 survey.

Survey executed by Richard A. Zaninovich, Cadastral Surveyor, beginning January 10, 1994, and completed March 17, 1994, pursuant to Special Instructions dated January 10, 1994, for Group No. 742, Nevada.

UNITED STATES DEPARTMENT OF THE INTERIOR
BUREAU OF LAND MANAGEMENT

Reno, Nevada

April 19, 1994

This plat is strictly conformable to the approved field notes, and the survey, having been correctly executed in accordance with the requirements of law and the regulations of this Bureau, is hereby accepted.

For the Director

John J. Starnish

Chief Cadastral Surveyor, Nevada

T.22S.,R.61E.,M.D.M.