

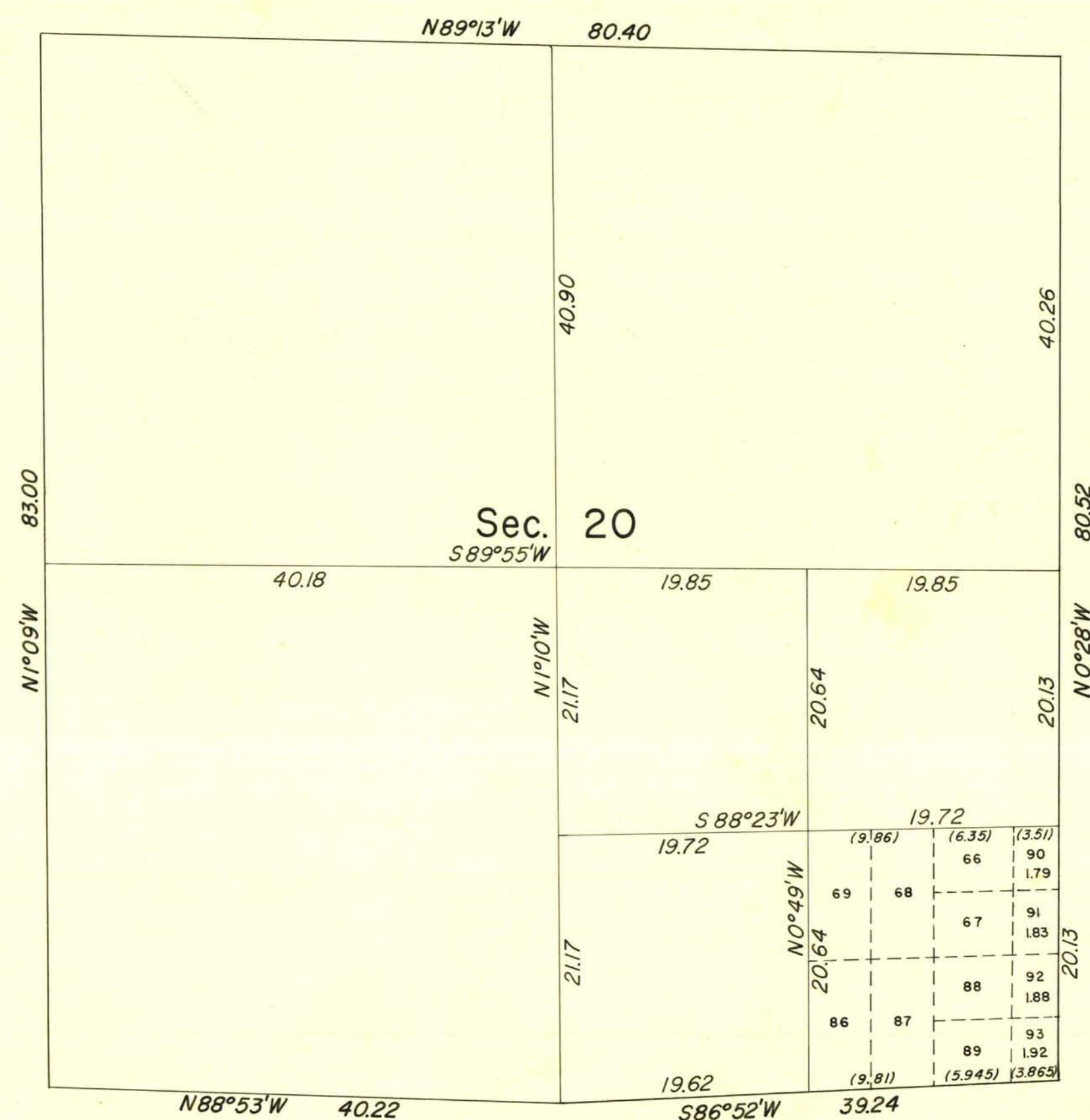
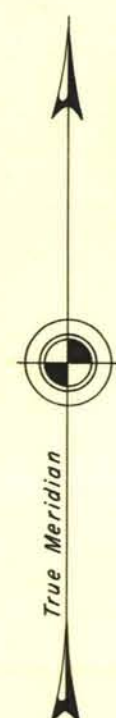
ORIGINAL

RECEIVED
LAND AND SURVEY OFFICE
RENO, NEVADA

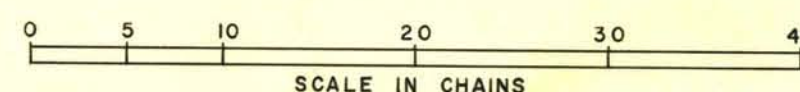
JUL 11 1955

7 8 9 10 11 12 1 2 3 4 5 6

TOWNSHIP 22 SOUTH, RANGE 61 EAST, MOUNT DIABLO MERIDIAN, NEVADA
SUPPLEMENTAL PLAT



This plat showing a subdivision of lot 65, is based upon the plat accepted February 18, 1953, to which reference will be made for lot numbers and areas other than for lots 90 to 93, inclusive, the areas of which are shown hereon.



UNITED STATES DEPARTMENT OF THE INTERIOR
BUREAU OF LAND MANAGEMENT
Washington, D. C. June 27, 1955

This plat showing amended lottings, having been correctly prepared in accordance with the regulations, is hereby accepted.

For the Director

Earl G. Harrington
Cadastral Engineering Staff Officer

Sec 20 T22 S R61E

2681-L