

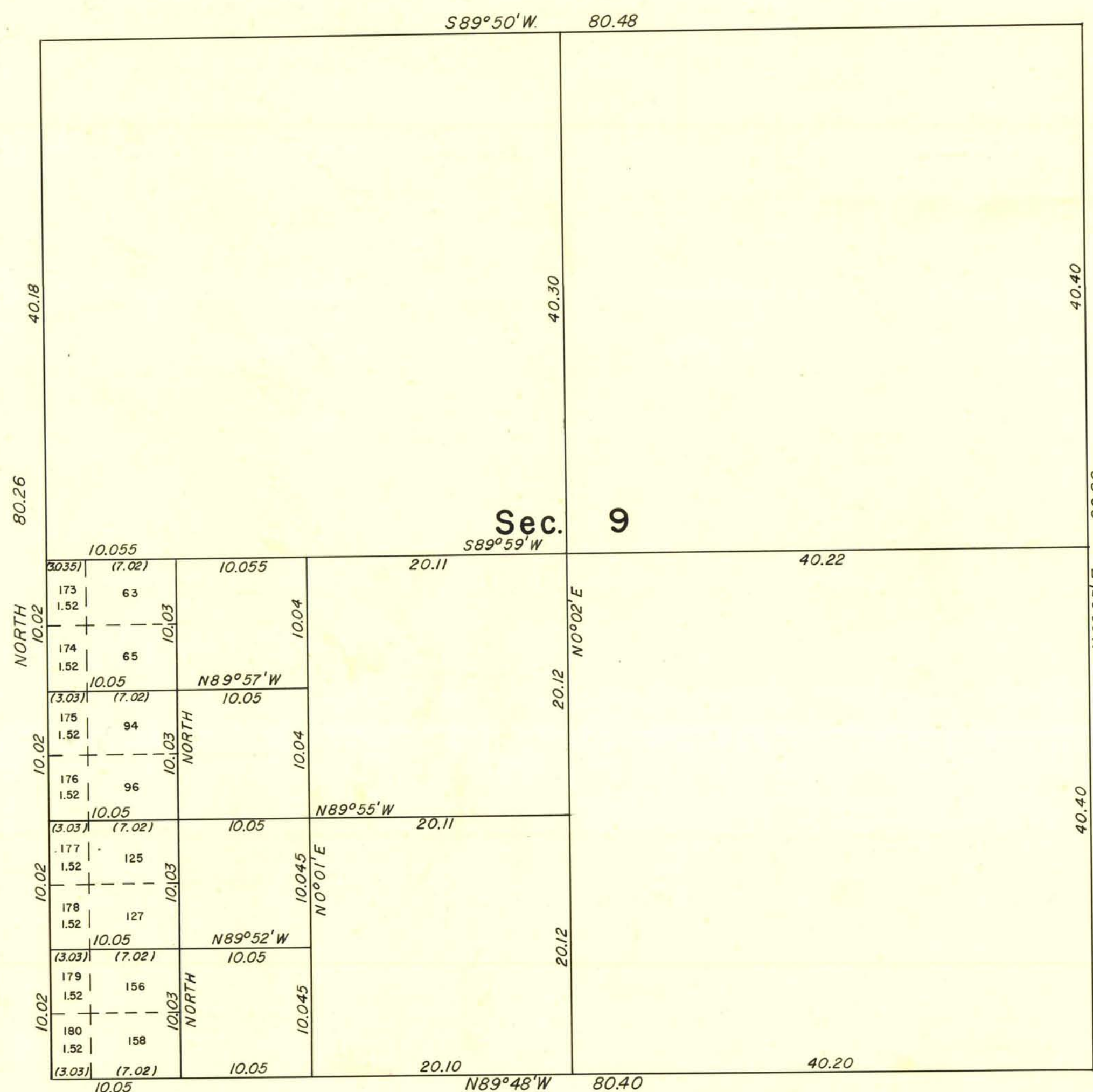
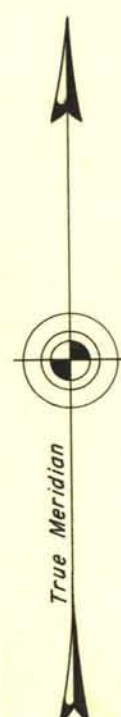
ORIGINAL

RECEIVED
LAND AND SURVEY OFFICE
RENO, NEVADA

JUL 11 1955

7/8/9/10/11/12/13/14/15/16

TOWNSHIP 22 SOUTH, RANGE 61 EAST, MOUNT DIABLO MERIDIAN, NEVADA.
SUPPLEMENTAL PLAT



This plat showing a subdivision of original lots 64, 95, 126, and 157, is based upon the plat accepted February 18, 1953, to which reference will be made for lot numbers and areas other than for lots 173 to 180, inclusive, the areas of which are shown hereon.

UNITED STATES DEPARTMENT OF THE INTERIOR
BUREAU OF LAND MANAGEMENT
Washington, D. C. June 27, 1955

This plat showing amended lottings, having been correctly prepared in accordance with the regulations, is hereby accepted.

For the Director

Karl J. Harrington

Cadastral Engineering Staff Officer

