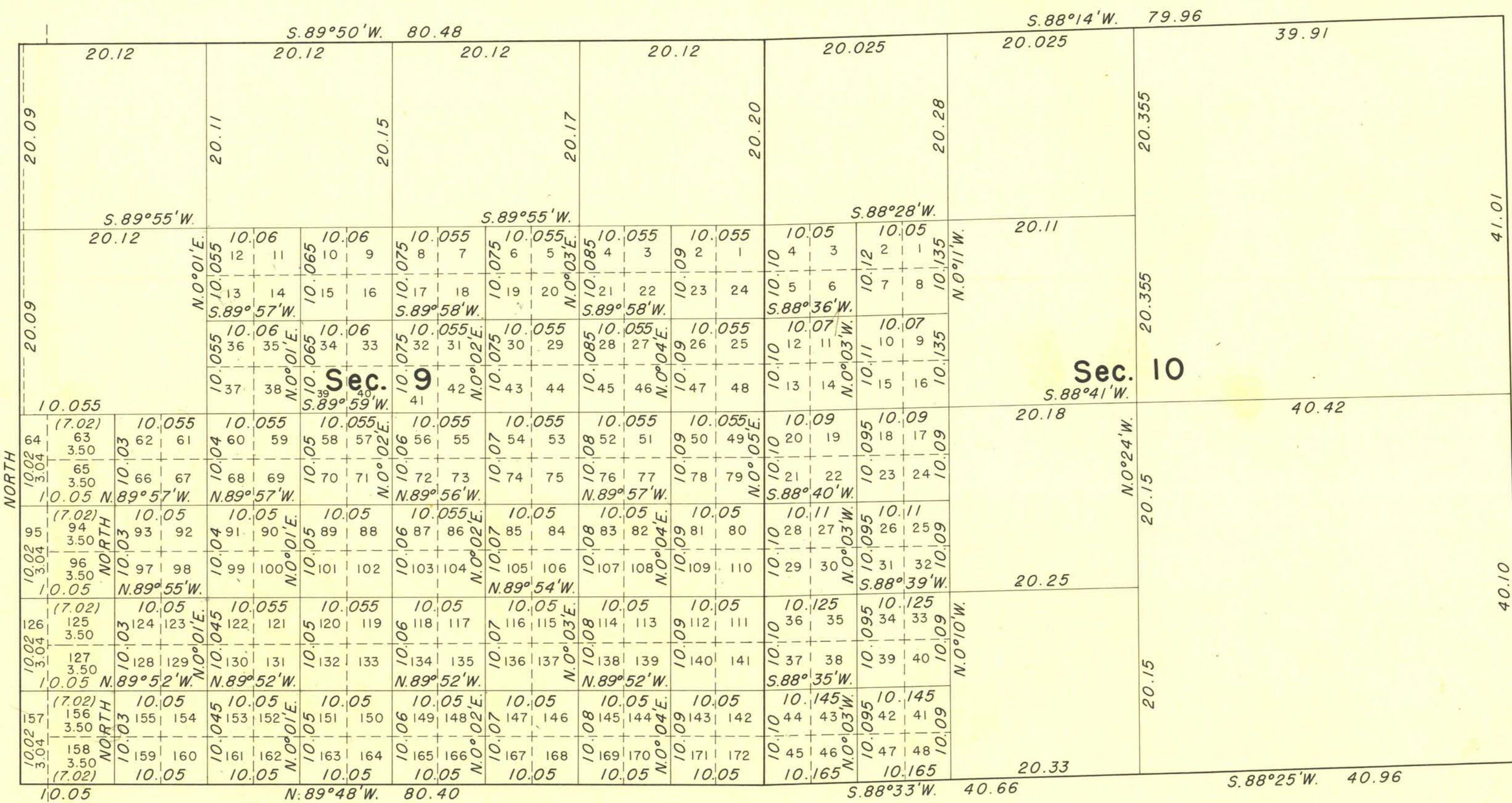
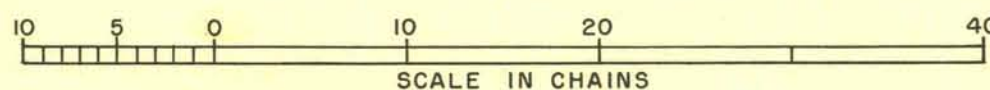


# TOWNSHIP 22 SOUTH, RANGE 61 EAST, MOUNT DIABLO MERIDIAN, NEVADA



Lots 64, 95, 126 and 157 of sec. 9 are within State Highways Nos. 91 and 466.



**AREA RESURVEYED:**

- Sec. 10: 640 Acres. Lots 1 through 48 each contain 2.50 acres.
- Sec. 9: 640.16 Acres. Lots 1 through 172 each contain 2.50 acres except as areas are shown hereon.

UNITED STATES  
DEPARTMENT OF THE INTERIOR  
BUREAU OF LAND MANAGEMENT  
Washington, D. C., February 18, 1953

This plat is strictly conformable to the approved field notes, and the survey, having been correctly executed in accordance with the requirements of law and the regulations of this Bureau, is hereby accepted.

For the Director

*Donald B. Clement*  
Assistant Chief, Division of  
Cadastral Engineering