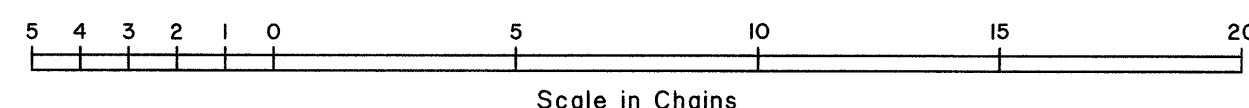
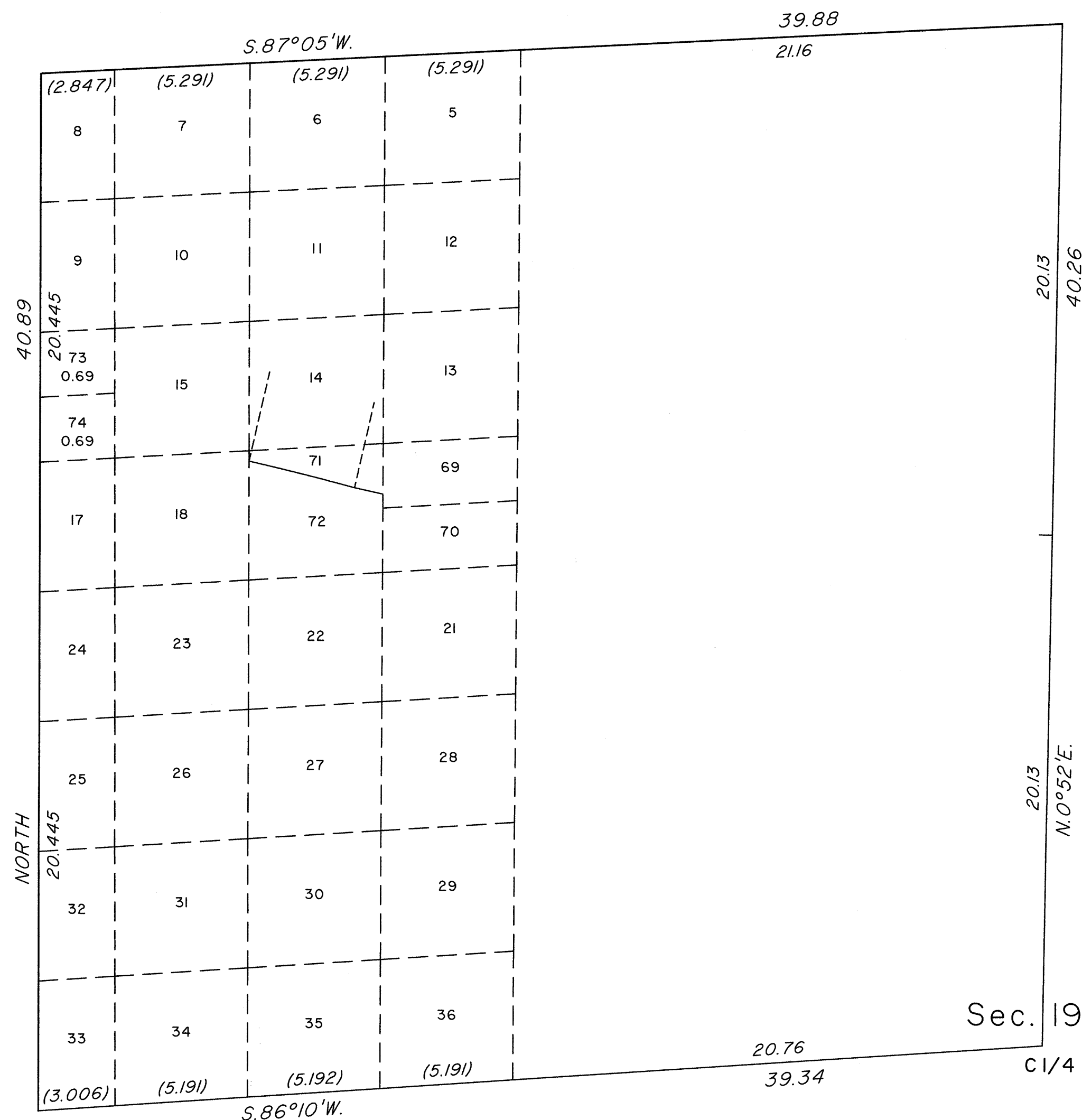
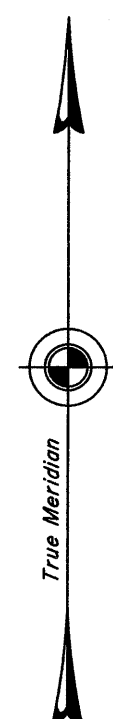


TOWNSHIP 22 SOUTH, RANGE 60 EAST, OF THE MOUNT DIABLO MERIDIAN, NEVADA

SUPPLEMENTAL PLAT OF THE NW 1/4 OF SECTION 19



This plat, showing the subdivision of former lot 16, section 19, Township 22 South, Range 60 East, Mount Diablo Meridian, Nevada, is based upon the plat approved September 3, 1881, the plats accepted December 21, 1955, March 13, 1956, March 24, 1959, February 19, 2008 and December 16, 2008, is prepared to accommodate a proposed land sale under provisions of the Southern Nevada Public Land Act.

Plat prepared by Clay W. Morrow, Cartographic Technician, under the direction of Michael O. Harmening, Cadastral Surveyor, beginning April 1, 2013 and completed April 1, 2013, pursuant to special instructions dated April 1, 2013, and assignment instructions dated April 1, 2013, for Group No. 923, Nevada.

Except as indicated hereon, the lottings and areas are as shown on plat approved September 3, 1881, the plats accepted December 21, 1955, March 13, 1956, February 19, 2008 and December 16, 2008.

UNITED STATES DEPARTMENT OF THE INTERIOR
BUREAU OF LAND MANAGEMENT

Reno, Nevada April 5, 2013

This plat, showing amended lottings, is based upon the official records, and having been correctly prepared in accordance with the requirements of the law and the regulations of this Bureau, is hereby accepted.

For the Director

David D. Morlan

Chief Cadastral Surveyor for Nevada