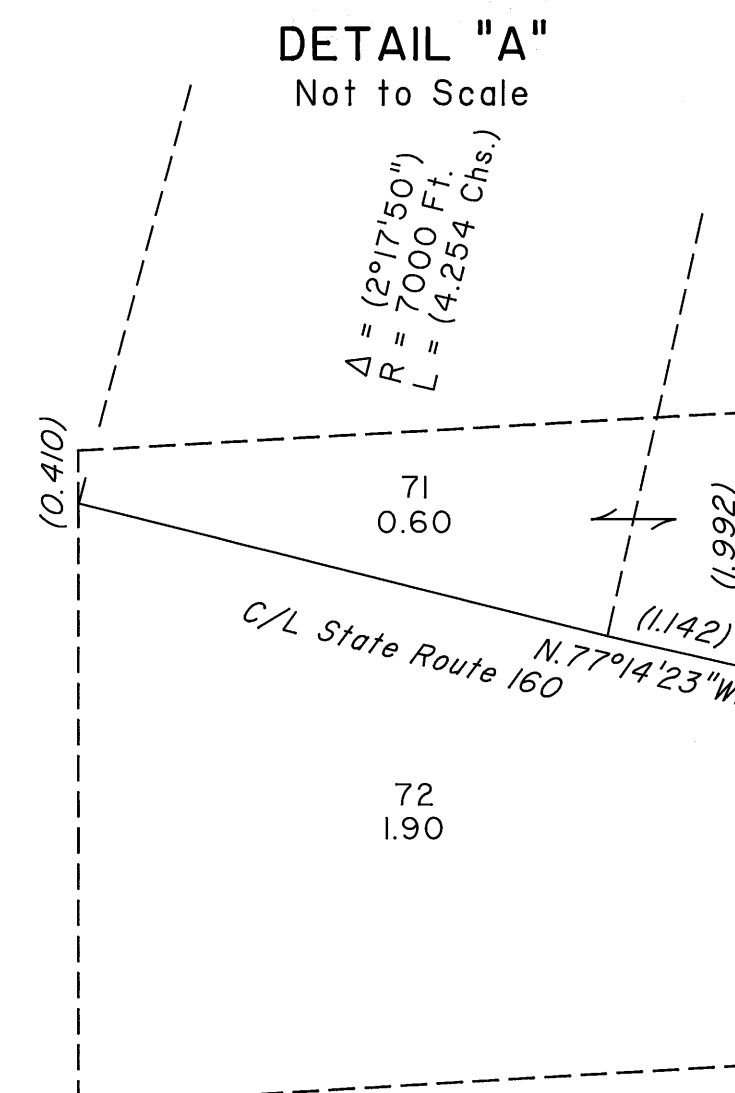
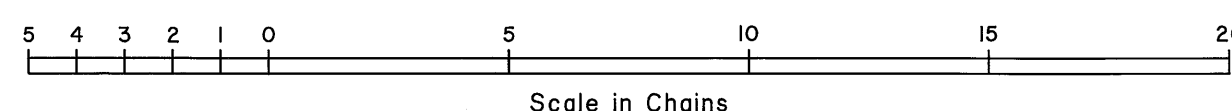
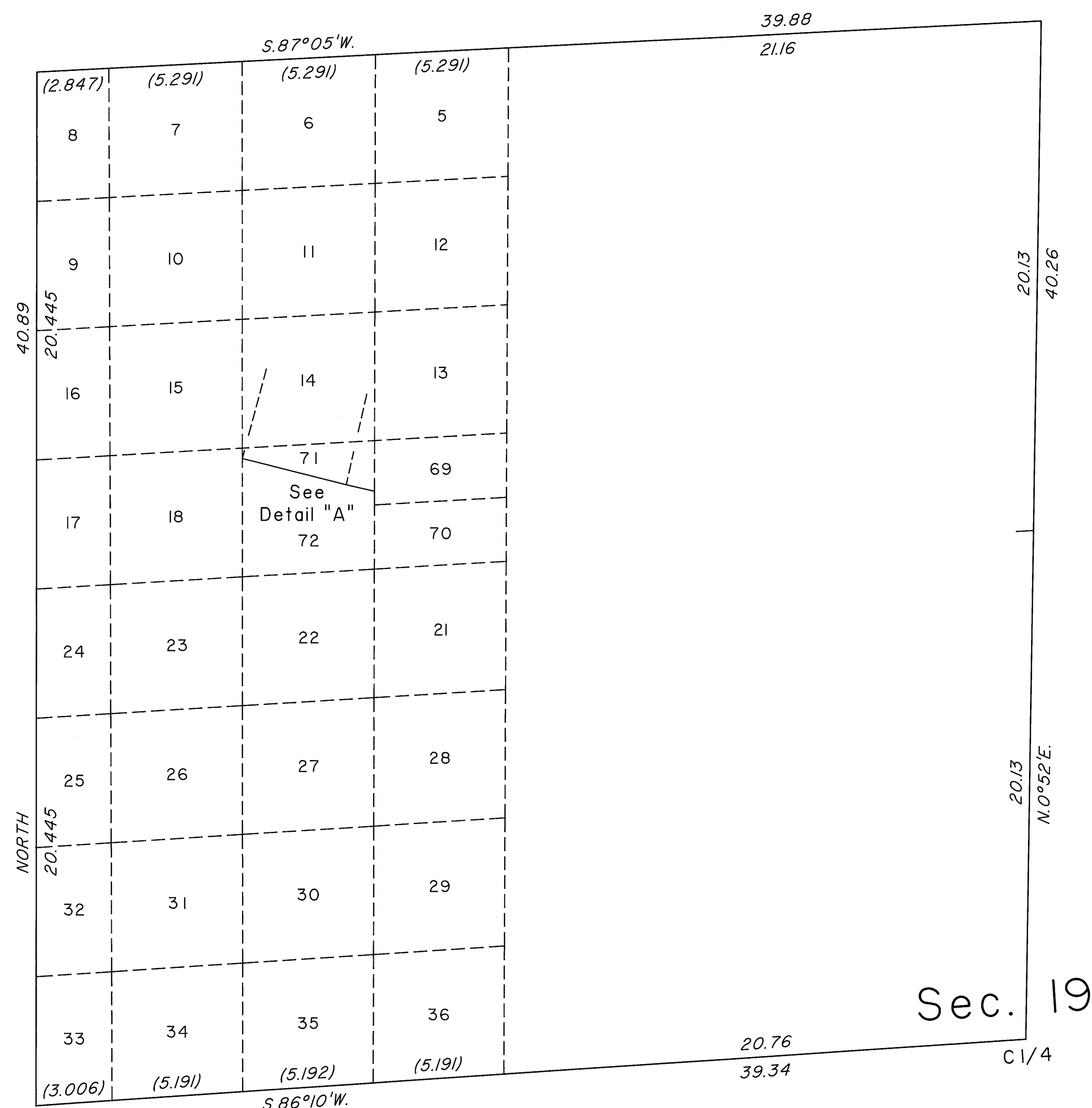
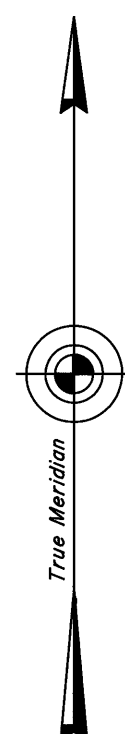


TOWNSHIP 22 SOUTH, RANGE 60 EAST, OF THE MOUNT DIABLO MERIDIAN, NEVADA
SUPPLEMENTAL PLAT OF THE NW 1/4 OF SECTION 19



This plat, showing the subdivision of former lot 19, sec. 19, Township 22 South, Range 60 East, Mount Diablo Meridian, Nevada, is based upon the plat approved September 3, 1881, the plats accepted December 21, 1955, March 13, 1956, March 24, 1959, and February 19, 2008, Nevada Department of Highways right-of-way application Nev. 012728 and supplemental field tablet data provided by the Nevada Department of Transportation.

UNITED STATES DEPARTMENT OF THE INTERIOR
BUREAU OF LAND MANAGEMENT

Reno, Nevada December 16, 2008

This plat, showing amended lottings, is based upon the official records, and having been correctly prepared in accordance with the regulations of this Bureau, is hereby accepted.

For the Director

David A. Moulton

Chief Cadastral Surveyor, Nevada