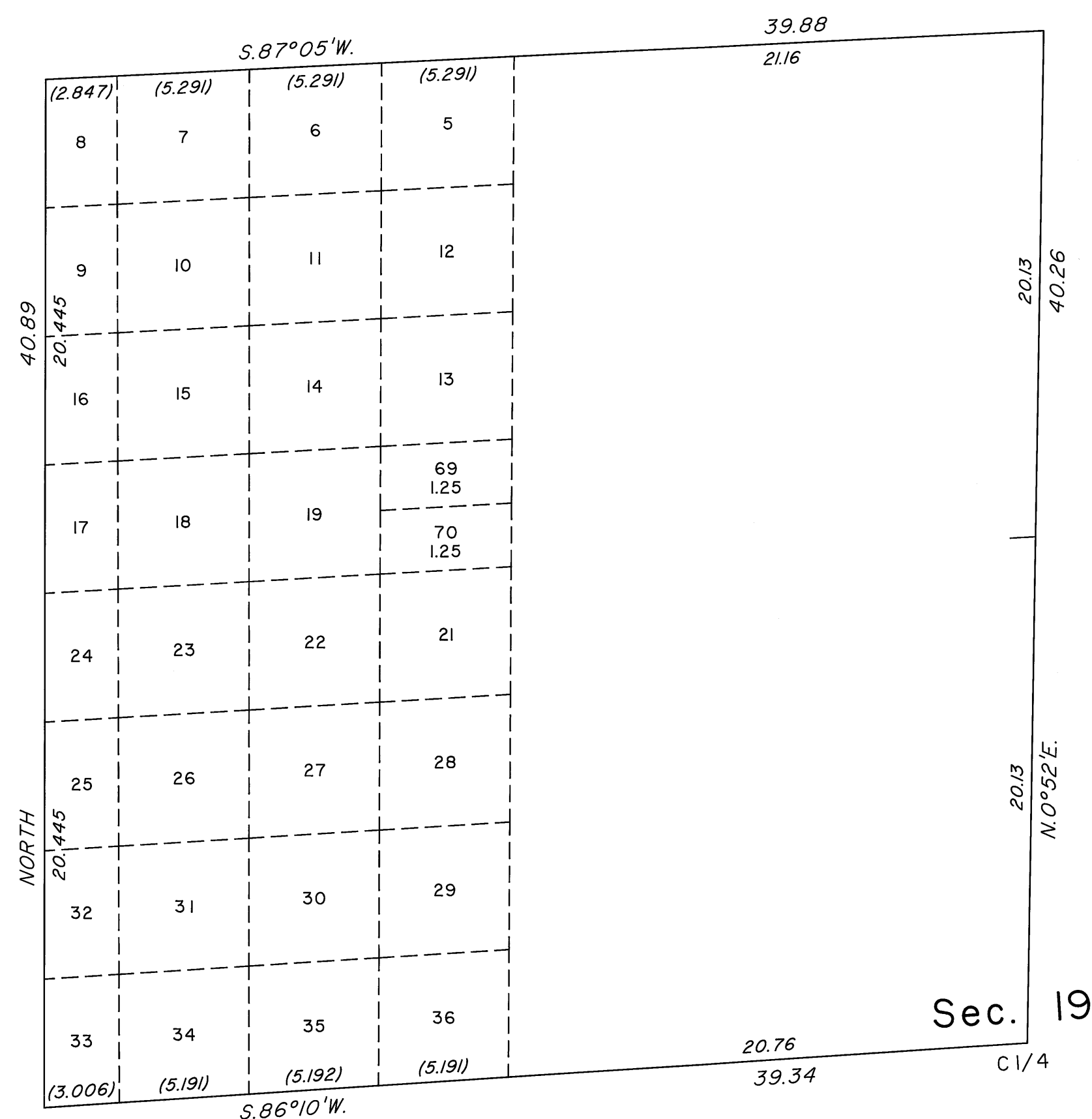
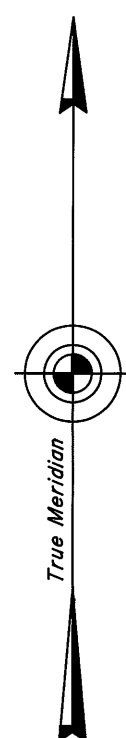


ORIGINAL

OFFICIALLY FILED
NEVADA STATE OFFICE
at 10:00 AM on February 21, 2008

TOWNSHIP 22 SOUTH, RANGE 60 EAST, OF THE MOUNT DIABLO MERIDIAN, NEVADA
SUPPLEMENTAL PLAT OF THE NW 1/4 OF SECTION 19



This plat, showing the subdivision of former lot 20, sec. 19, Township 22 South, Range 60 East, Mount Diablo Meridian, Nevada, is based upon the plat approved September 3, 1881, and the plats accepted December 21, 1955, March 13, 1956 and March 24, 1959.

UNITED STATES DEPARTMENT OF THE INTERIOR
BUREAU OF LAND MANAGEMENT

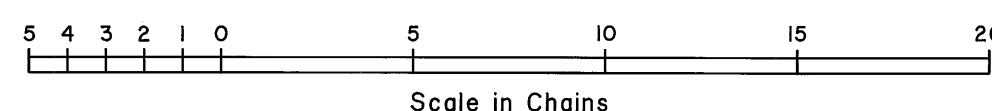
Reno, Nevada February 19, 2008

This plat, showing amended lottings, is based upon the official records, and having been correctly prepared in accordance with the regulations of this Bureau, is hereby accepted.

For the Director

David R. Morlan

Chief Cadastral Surveyor, Nevada



62

T.22S., R.60E., M.D.M.