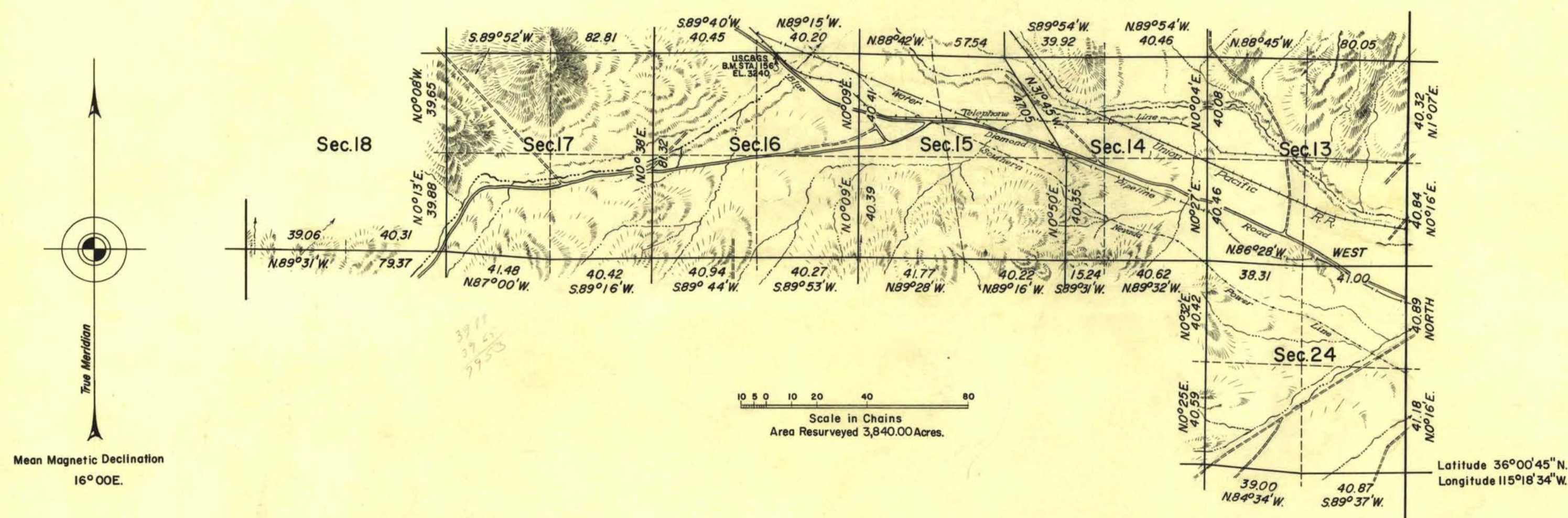


TOWNSHIP 22 SOUTH, RANGE 59 EAST, OF THE MOUNT DIABLO MERIDIAN, NEVADA.

DEPENDENT RESURVEY



History of earlier surveys is contained in the field notes.

This plat represents the dependent resurvey of a portion of the subdivisional lines of T. 22 S., R. 59 E., Mt. Diablo Meridian, Nevada, designed to restore the corners in their original locations according to the best available evidence.

Areas are as shown on plat approved September 9, 1881.

Survey executed by Horace G. Parker, March 16 to 23, 1956 under special instructions dated January 27, 1956 for Group 363, Nevada.

UNITED STATES DEPARTMENT OF THE INTERIOR
BUREAU OF LAND MANAGEMENT
Washington, D. C. November 2, 1956

This plat is strictly conformable to the approved field notes, and the survey, having been correctly executed in accordance with the requirements of law and the regulations of this Bureau, is hereby accepted.

For the Director

Earl G. Harrington
Cadastral Engineering Staff Officer