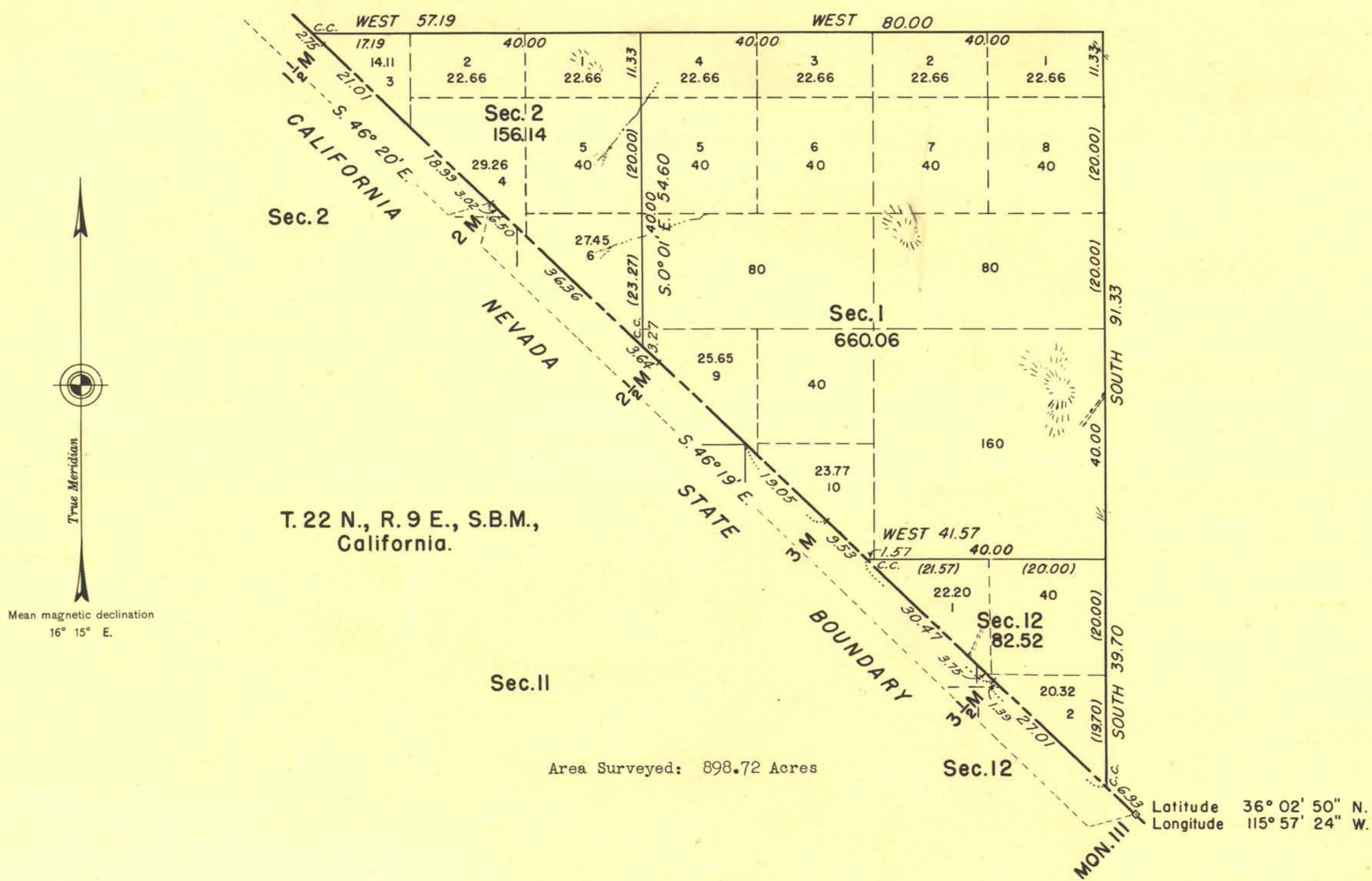
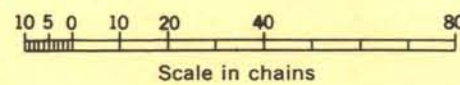


# TOWNSHIP 22 SOUTH, RANGE 53 EAST, OF THE MOUNT DIABLO MERIDIAN, NEVADA.



Survey of the subdivisional lines executed by G. Marvin Litz March 26 to March 31, 1948 under Special Instructions dated January 27, 1948, for Group 350 Nevada.



UNITED STATES DEPARTMENT OF THE INTERIOR  
BUREAU OF LAND MANAGEMENT  
Washington, D. C., September 22, 1949

This plat is strictly conformable to the approved field notes, and the survey, having been correctly executed in accordance with the requirements of law and the regulations of this Bureau, is hereby accepted.

For the Director:  
*Carl S. Harrington*  
Chief, Division of Engineering