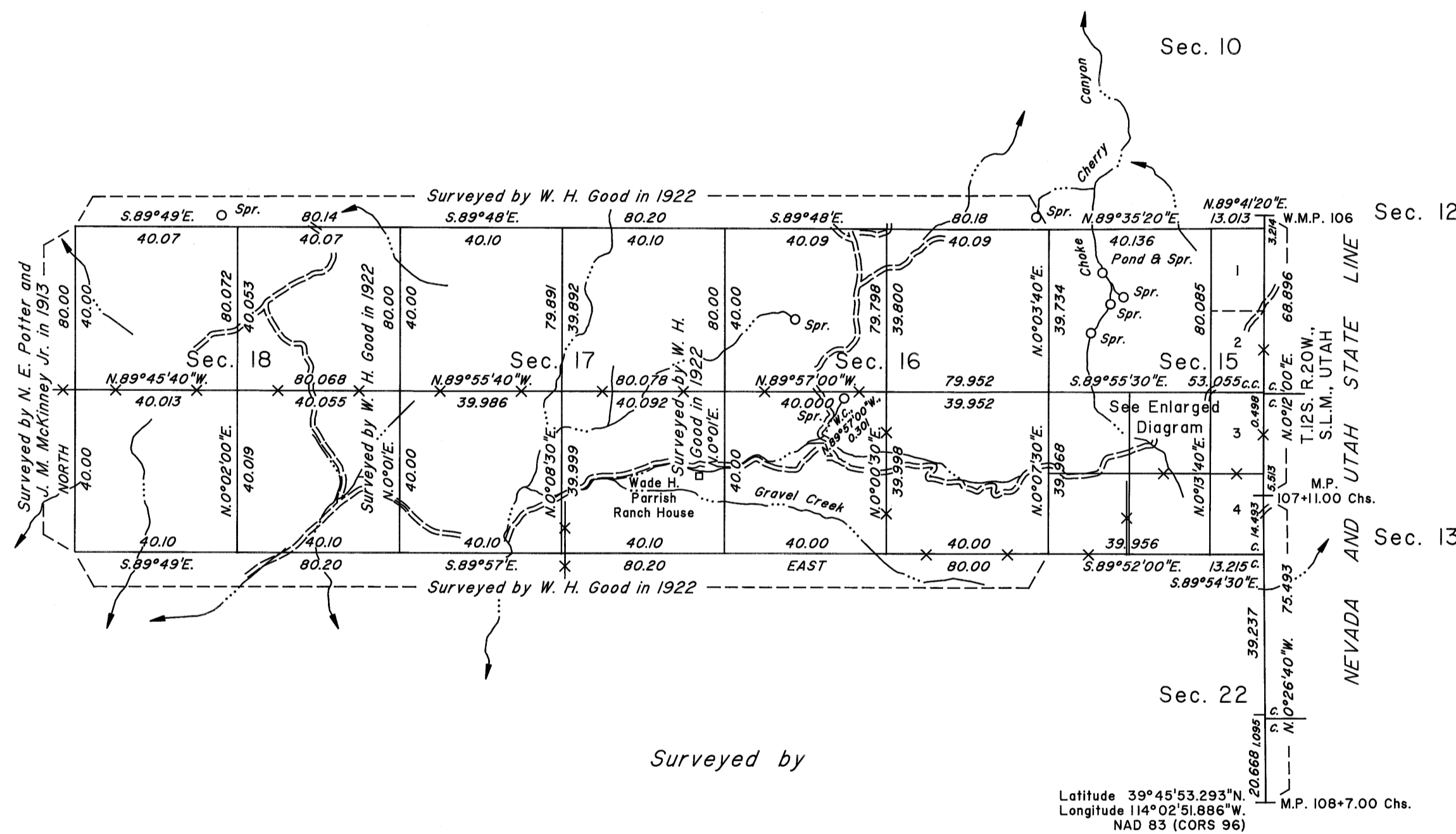


TOWNSHIP 22 NORTH, RANGE 70 EAST, OF THE MOUNT DIABLO MERIDIAN, NEVADA  
DEPENDENT RESURVEY AND SUBDIVISION

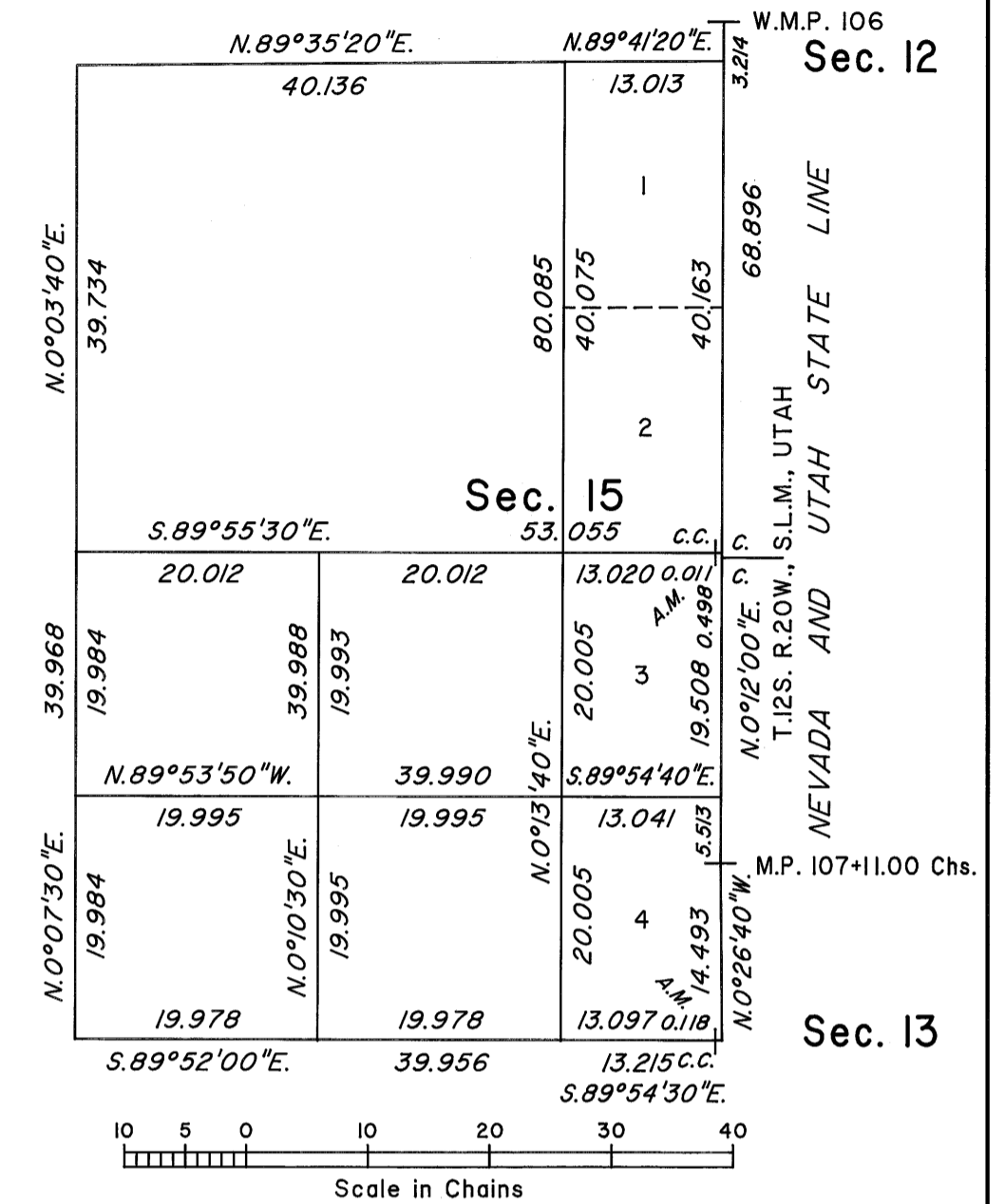
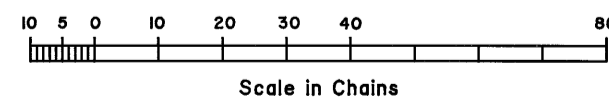
ENLARGED DIAGRAM

Surveyed by  
W. H. Good  
in 1922



Surveyed by  
W. H. Good  
in 1922

Latitude 39°45'53.293"N  
Longitude 114°02'51.886"W  
NAD 83 (CORS 96)



A history of surveys is contained in the field notes.

This plat represents the dependent resurvey of a portion of the Nevada-Utah State Line, from Mile Post 108+7.00 Chains to Witness Mile Post 106 and a portion of the subdivisional lines designed to restore the corners in their true original locations according to the best available evidence, and the subdivision of certain sections, Township 22 North, Range 70 East, Mount Diablo Meridian, Nevada.

The lottings and areas are as shown on the plat approved June 26, 1923.

Survey executed by Don R. Aschenbach, Cadastral Surveyor, beginning June 27, 2008, and completed July 29, 2009, pursuant to Special Instructions dated May 12, 2008, for Group No. 864, Nevada.

UNITED STATES DEPARTMENT OF THE INTERIOR  
BUREAU OF LAND MANAGEMENT

Reno, Nevada September 30, 2009

This plat is strictly conformable to the approved field notes, and the survey, having been correctly executed in accordance with the requirements of law and the regulations of this Bureau, is hereby accepted.

For the Director

Acting Chief Cadastral Surveyor, Nevada