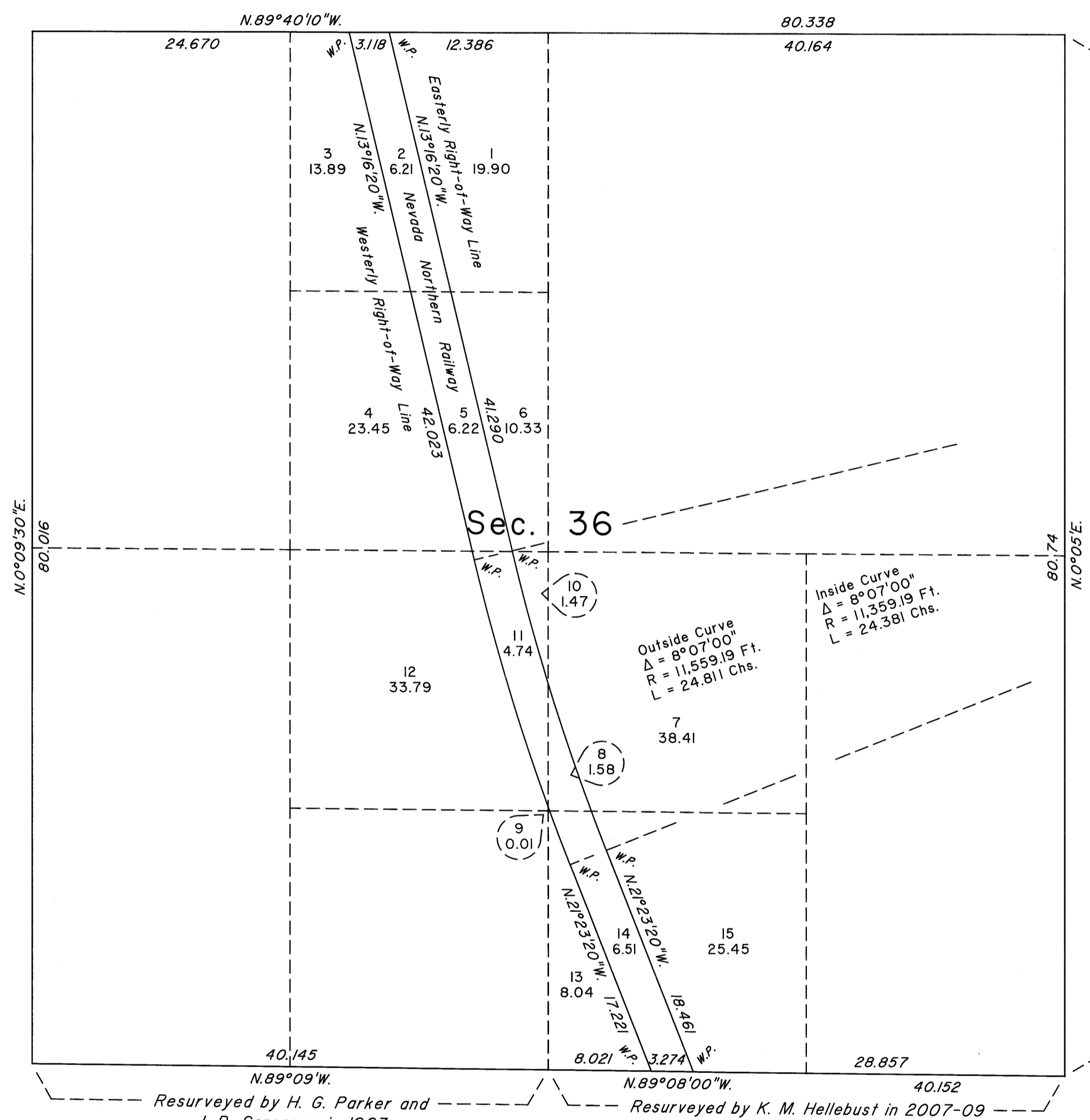


TOWNSHIP 22 NORTH, RANGE 63 EAST, OF THE MOUNT DIABLO MERIDIAN, NEVADA  
ENLARGED DIAGRAM

OFFICIALLY FILED  
NEVADA STATE OFFICE  
at 10:00 AM on April 29, 2010



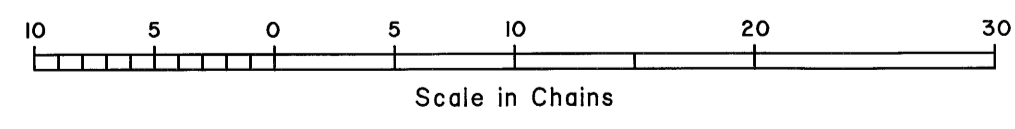
Reference should be made to Sheet No. 1 for survey information.

UNITED STATES DEPARTMENT OF THE INTERIOR  
BUREAU OF LAND MANAGEMENT  
Reno, Nevada April 27, 2010

This plat is strictly conformable to the approved field notes, and the survey, having been correctly executed in accordance with the requirements of law and the regulations of this Bureau, is hereby accepted.

For the Director  
*David A. Sporan*

Chief Cadastral Surveyor, Nevada



Resurveyed by H. G. Parker and J. D. Sorensen in 1963  
Resurveyed by K. M. Hellebust in 2007-09