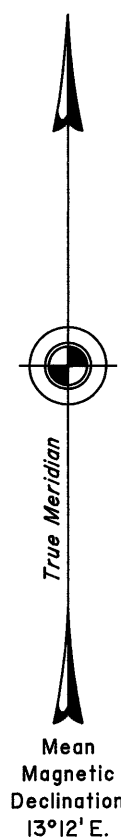
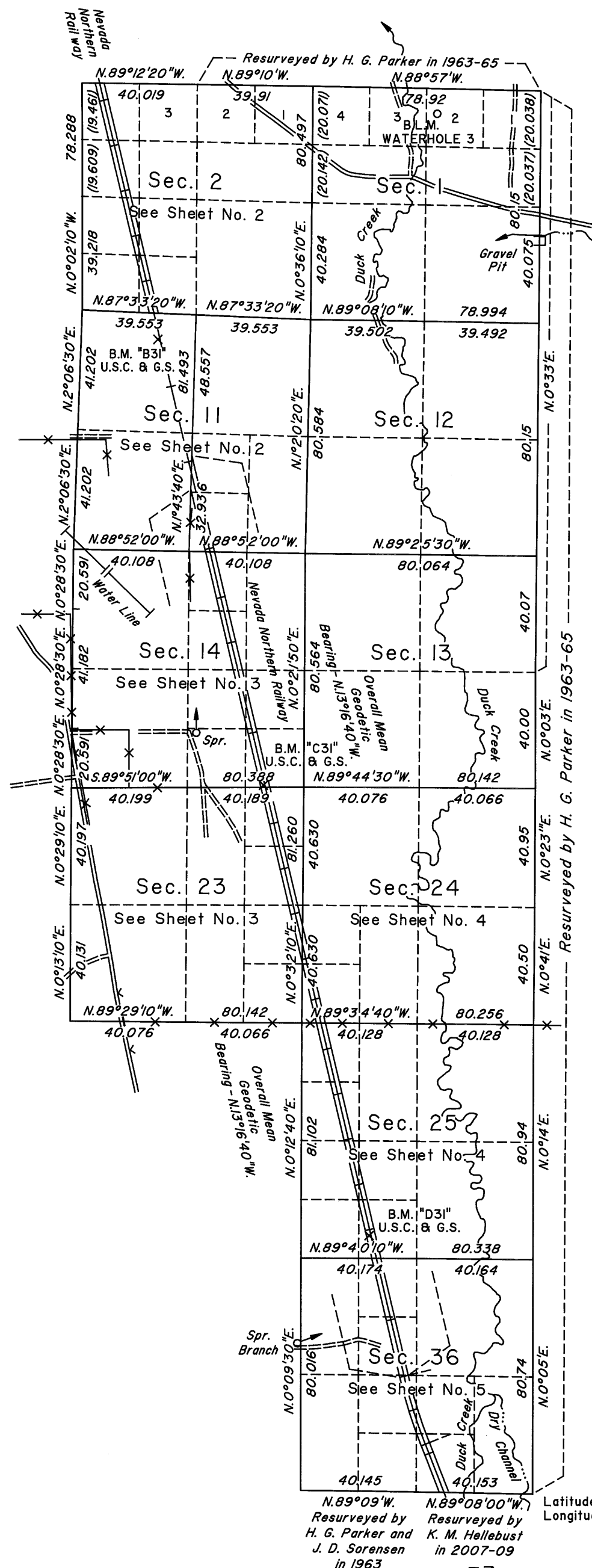


TOWNSHIP 22 NORTH, RANGE 63 EAST, OF THE MOUNT DIABLO MERIDIAN, NEVADA  
DEPENDENT RESURVEY, SUBDIVISION AND METES-AND-BOUNDS SURVEY

OFFICIALLY FILED  
NEVADA STATE OFFICE  
at 10:00 AM on April 29, 2010



A history of surveys is contained in the field notes.

This plat, in five sheets, represents the dependent resurvey of a portion of the north boundary and a portion of the subdivisional lines designed to restore the corners in their true original locations according to the best available evidence, the subdivision of section 11, and metes-and-bounds surveys of portions of the easterly and westerly right-of-way lines of the Nevada Northern Railway, Township 22 North, Range 63 East, Mount Diablo Meridian, Nevada.

Except as indicated hereon, the lottings and areas are as shown on the plat approved February 7, 1876.

Survey executed by Kane M. Hellebust, Cadastral Surveyor, beginning August 8, 2008, and completed July 10, 2009, pursuant to Special Instructions dated July 16, 2008, for Group No. 867, Nevada.

UNITED STATES DEPARTMENT OF THE INTERIOR  
BUREAU OF LAND MANAGEMENT

Reno, Nevada April 27, 2010

This plat is strictly conformable to the approved field notes, and the survey, having been correctly executed in accordance with the requirements of law and the regulations of this Bureau, is hereby accepted.

For the Director

Chief Cadastral Surveyor, Nevada

