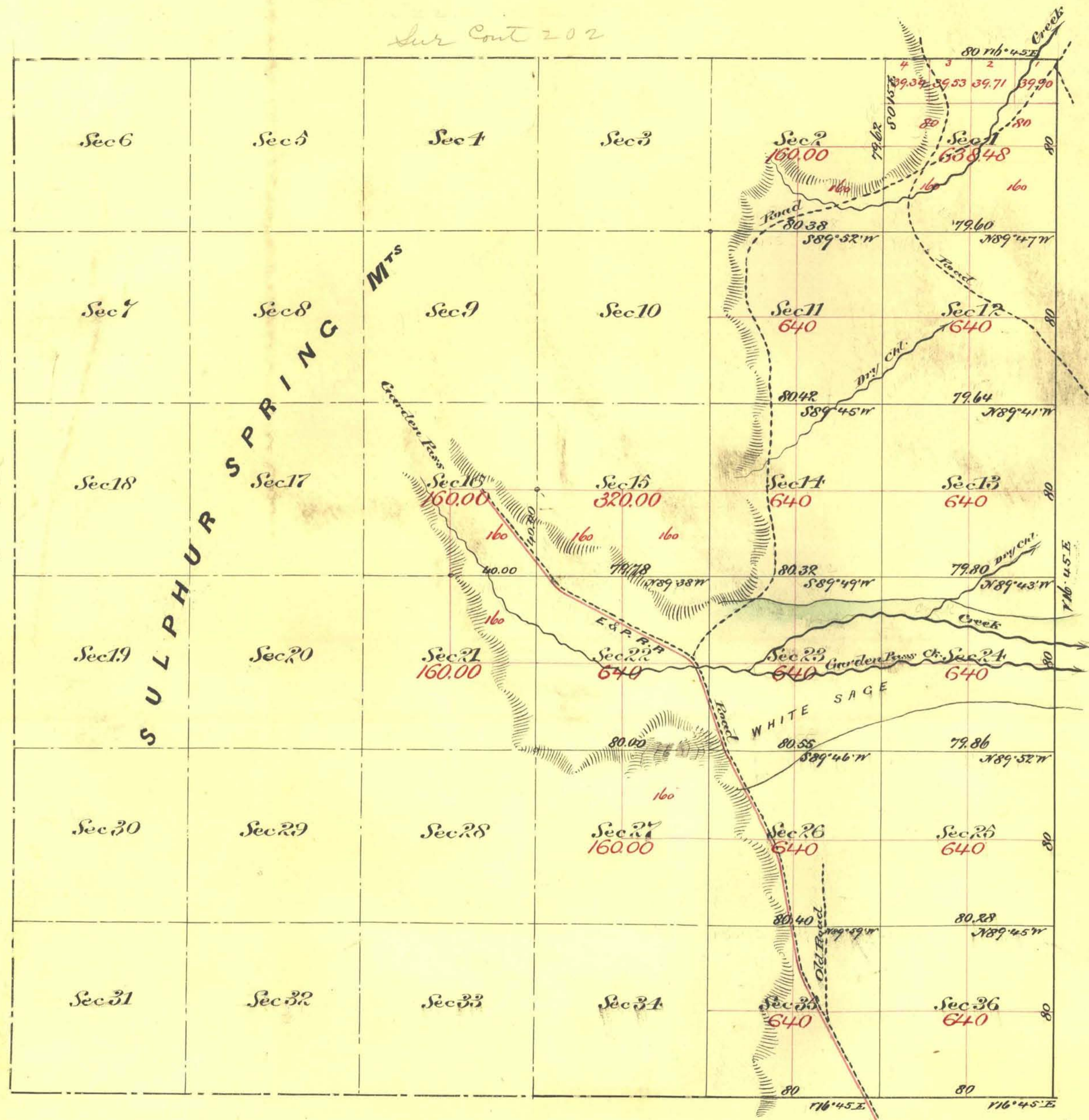


Survey plat suspended 1/17/61 - see Director's memo 1/17/61

Township N^o 22 North Range N^o 52 East Mount Diablo Meridian

Sur Cont 202

Sur Cont 202



Aggregate Area of Public Land Surveyed
 Estimated " " Mountains Unsurveyed
 Aggregate

8,638.48 Ac.
14,356.80 "
<u>22,995.28 "</u>

Commenced Octbr 5th 1879
 Completed " 11th "

Subdivision lines not otherwise noted run with a variation of N 45° East

The above plat of Township N^o 22 North of Range N^o 52 East Mount Diablo Meridian is strictly conformable to the field notes of the survey thereof on file in this office which have been examined and approved
 U.S. Surv. Genl. Office
 Nevada City Wash.
 November 4th 1879

Survey designated	By whom Surveyed	Date of Contract	Acres of Survey	When Surveyed	7 th Cont.
Cont boundary N. & S.	O. A. Palmer	Sept. 24 th 1870	4 - 00 - 00	1870	37
Subdivisions	Bridges & Eaton	Sept. 19 th 1879	3 - 00 - 00	1879	91
	"	"	25 - 00 - 65	October "	"

C. S. Palmer
 U.S. Surv. Genl. Off.