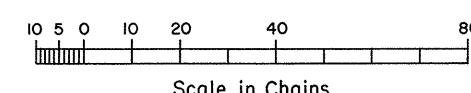
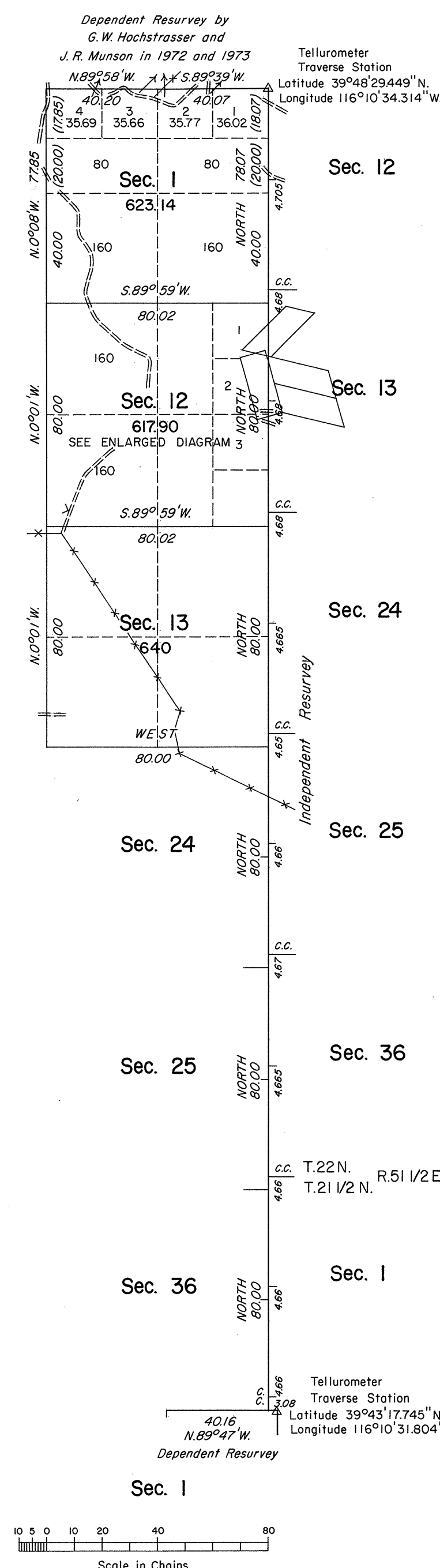
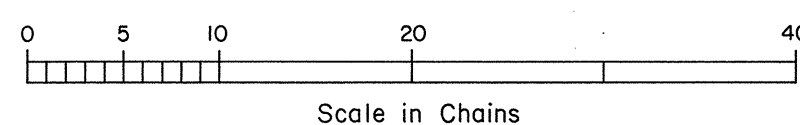
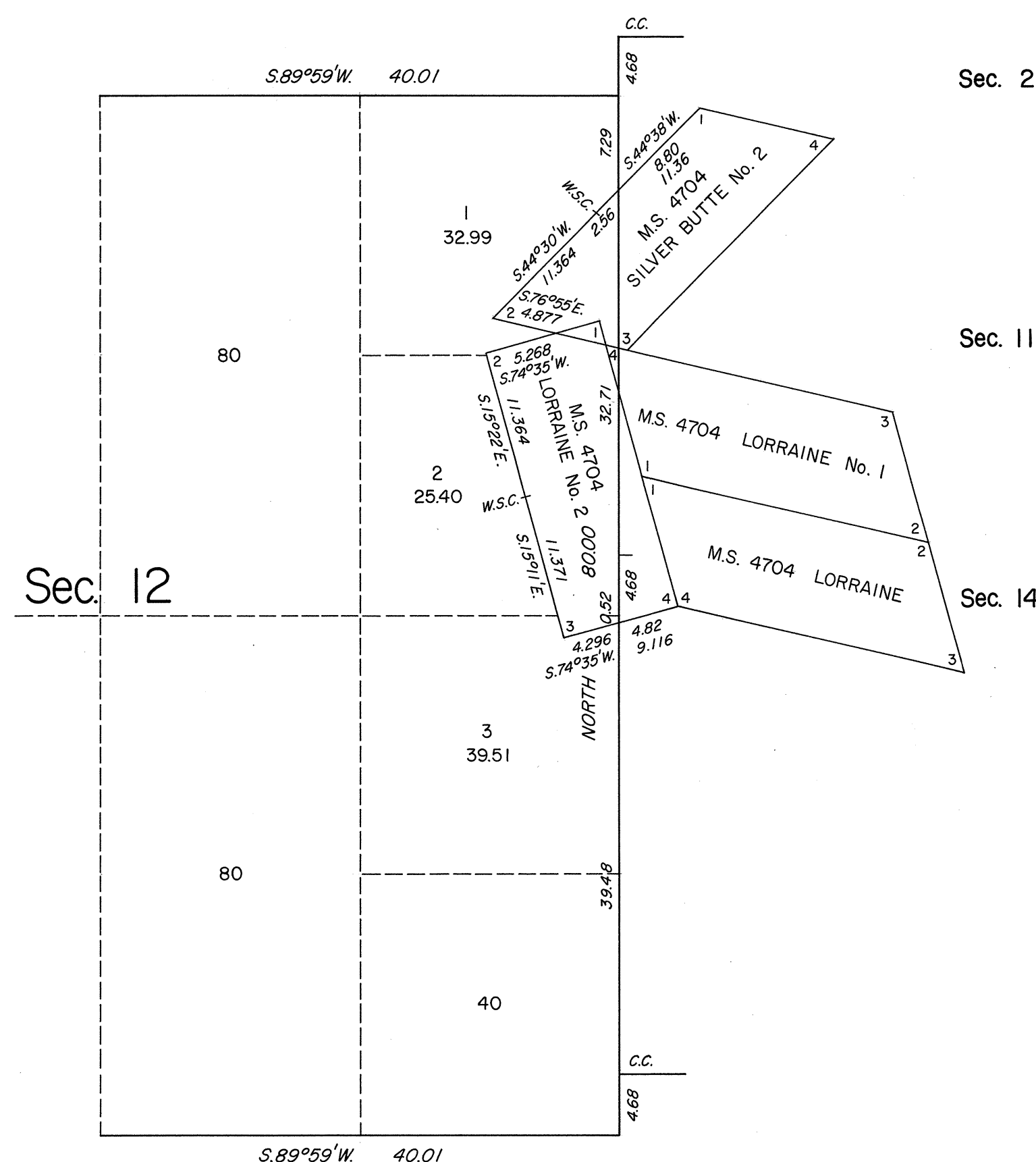
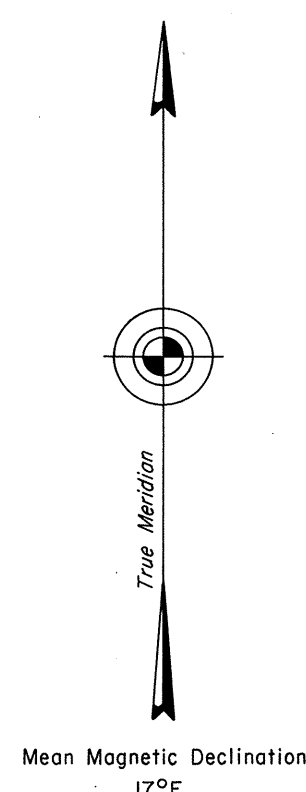


ORIGINAL

TOWNSHIP 22 NORTH, RANGE 51 EAST, OF THE MOUNT DIABLO MERIDIAN, NEVADA

ENLARGED DIAGRAM OF E. 1/2 SEC. 12



History of the earlier surveys is contained in the field notes.

A dependent resurvey of a portion of the north boundary of T. 21 N., R. 51 E., was executed concurrently under this same Group.

This plat represents an independent resurvey of the east boundary superseding the survey executed under Contract No. 202 by W. T. Moran in 1893 and the survey of a portion of the subdivisional lines of T. 22 N., R. 51 E. and the retracement and remonumentation of certain corners of Mineral Survey No. 4704.

Unless otherwise indicated in the field notes, all courses and distances, shown on the plat along the perimeter of the mineral segregation areas, were taken or computed from the appropriate mineral survey record.

Survey executed by John A. Farmer, Cadastral Surveyor, beginning July 19, 1983 and completed October 7, 1983, under Special Instructions dated June 6, 1983, for Group 608, Nevada.

Areas

Total Area of Segregation	22.10 Acres
Total Area Exclusive of Segregation	1,881.04 Acres
Total Area Surveyed	1,903.14 Acres

UNITED STATES DEPARTMENT OF THE INTERIOR
BUREAU OF LAND MANAGEMENT

Reno, Nevada April 25, 1984

This plat, is strictly conformable to the approved field notes, and the survey, having been correctly executed in accordance with the requirements of law and in the regulations of this Bureau, is hereby accepted.

For the Director

Lacel E. Bland

Chief Cadastral Surveyor

OFFICIALLY FILED
NEVADA STATE OFFICE
10:00 A.M. JULY 20, 1984

JRM