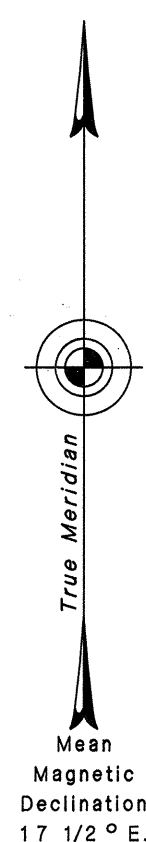


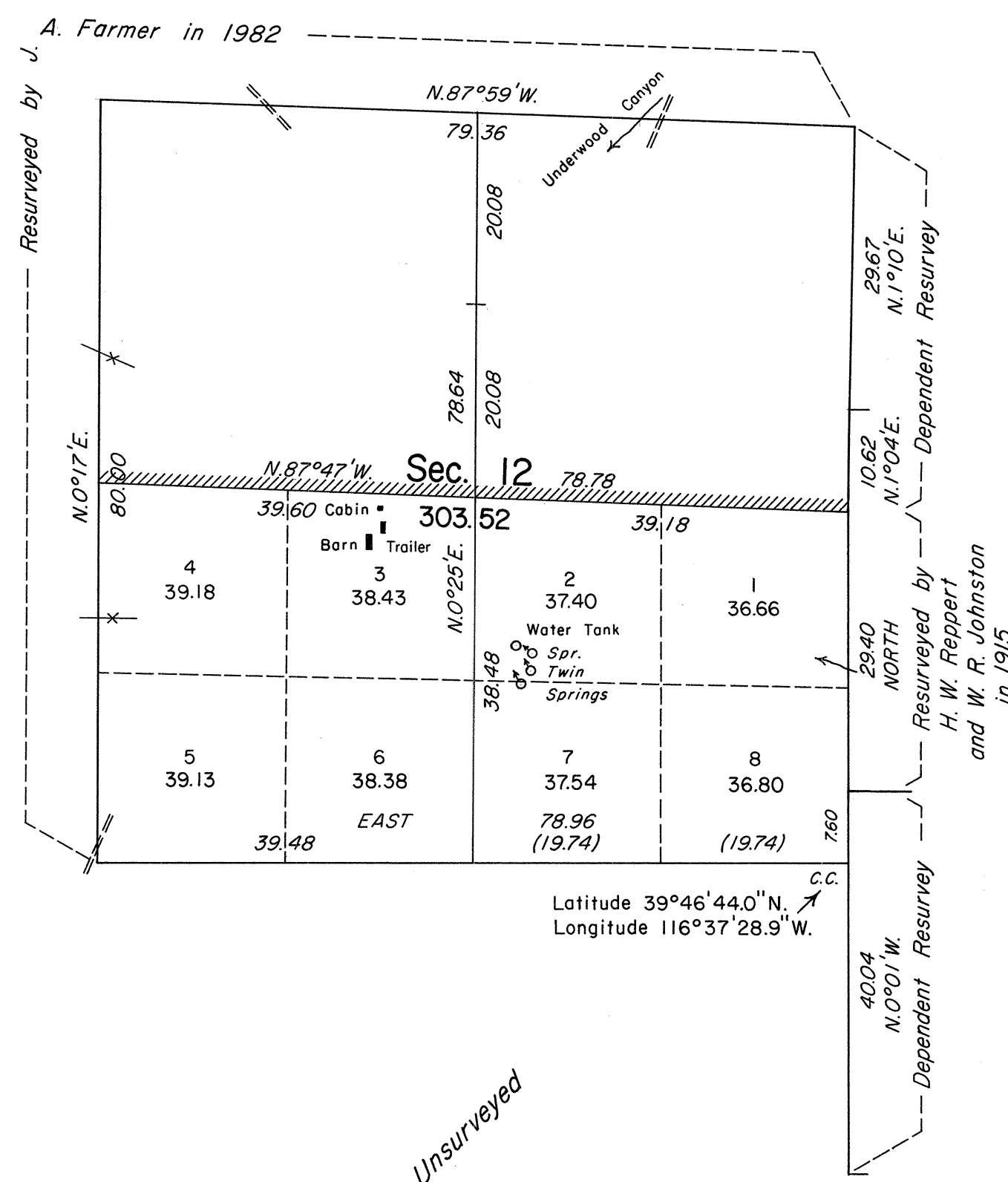
ORIGINAL

TOWNSHIP 22 NORTH, RANGE 47 EAST, OF THE MOUNT DIABLO MERIDIAN, NEVADA

Sec. 1



Sec. 11



Sec. 7

Sec. 18

History of the earlier surveys is contained in the field notes.

This plat represents a dependent resurvey of a portion of the west boundary of T. 22 N., R. 48 E., designed to restore the corners in their original locations according to the best available evidence and the survey of a portion of the subdivisional lines and the subdivision of section 12 of T. 22 N., R. 47 E., Mount Diablo Meridian, Nevada.

Areas and lottings, except as shown hereon, are as shown on the plat approved December 1, 1869 and the plat accepted March 8, 1884.

Survey executed by Neil R. Forsyth, Cadastral Surveyor, beginning May 4, 1987 and completed May 5, 1987, under Special Instructions dated April 30, 1987 for Group No. 646, Nevada.

UNITED STATES DEPARTMENT OF THE INTERIOR
BUREAU OF LAND MANAGEMENT

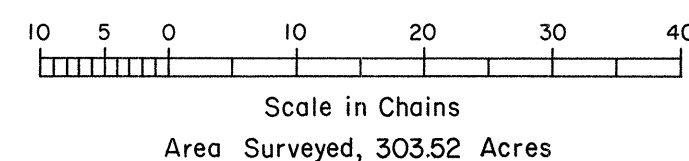
Reno, Nevada June 4, 1987

This plat is strictly conformable to the approved field notes, and the survey, having been correctly executed in accordance with the requirements of law and the regulations of this Bureau, is hereby accepted.

For the Director

Lacel E. Bland

Chief Cadastral Surveyor



GMJ

Leb

T. 22 N., R. 47 E., M.D.M.