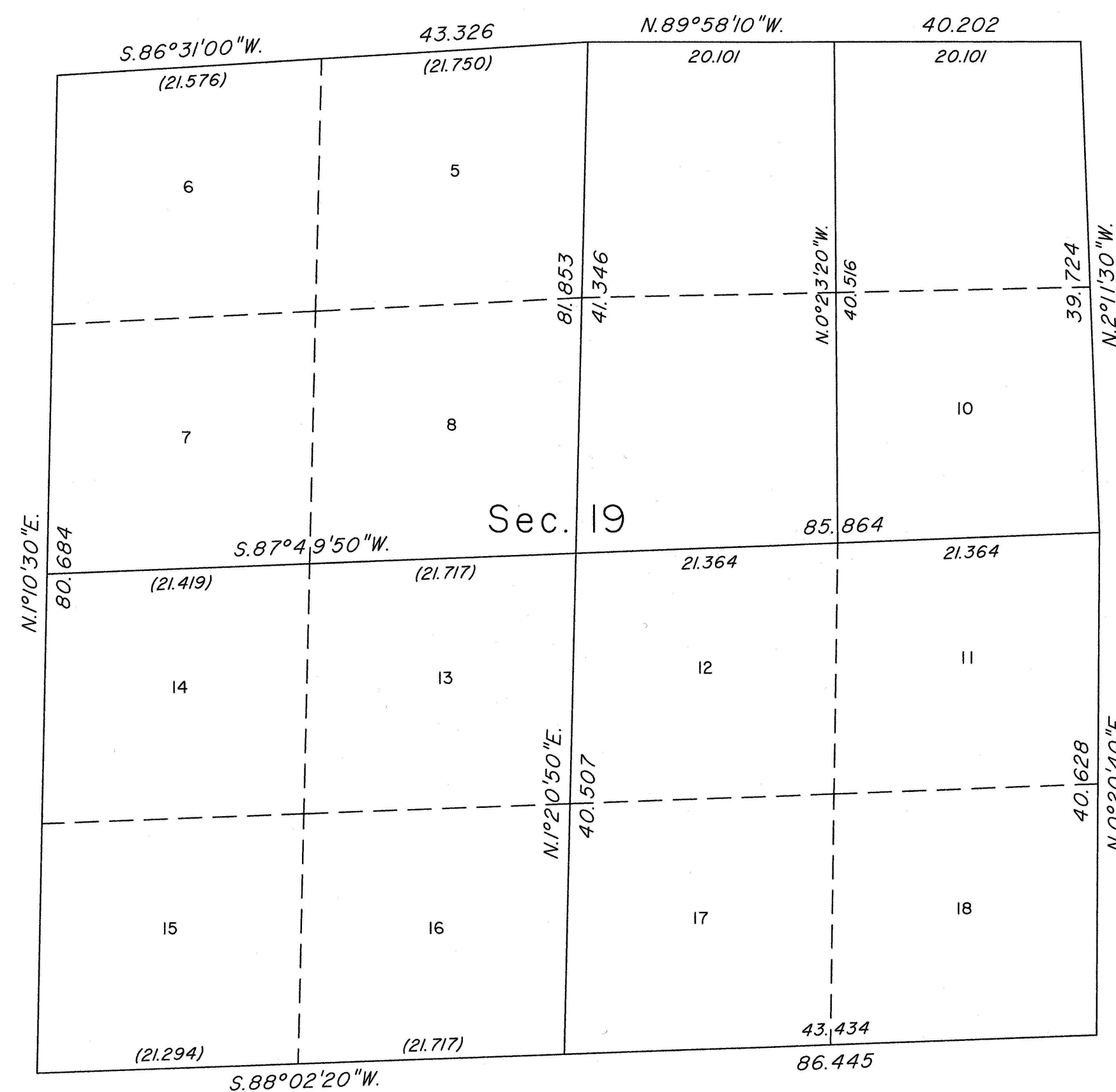


TOWNSHIP 22 NORTH, RANGE 35 EAST, OF THE MOUNT DIABLO MERIDIAN, NEVADA

SUPPLEMENTAL PLAT



This plat, showing the lottings and aliquot parts in section 19, T. 22 N., R. 35 E., Mount Diablo Meridian, Nevada, is based upon the plat accepted August 24, 2014, and is prepared to remove lot 9 and return the SW1/4NE1/4 to its proper aliquot designation. Plat prepared by Clay W. Morrow, Cartographic Technician, under the direction of Clarence D. Strickland, Cadastral Surveyor, on February 29, 2016, pursuant to Special Instructions dated February 29, 2016 and Assignment Instructions dated February 29, 2016, for Group No. 961, Nevada.

Except as indicated hereon, the lottings and areas are as shown on the plat approved November 20, 1882 and the plat accepted August 25, 2014.

UNITED STATES DEPARTMENT OF THE INTERIOR
BUREAU OF LAND MANAGEMENT

Reno, Nevada March 7, 2016

This plat, showing amended lottings, is based upon the official records, and having been correctly prepared in accordance with the requirements of the law and the regulations of this Bureau, is hereby accepted.

For the Director

Michael O. Hammering

Chief Cadastral Surveyor for Nevada

