

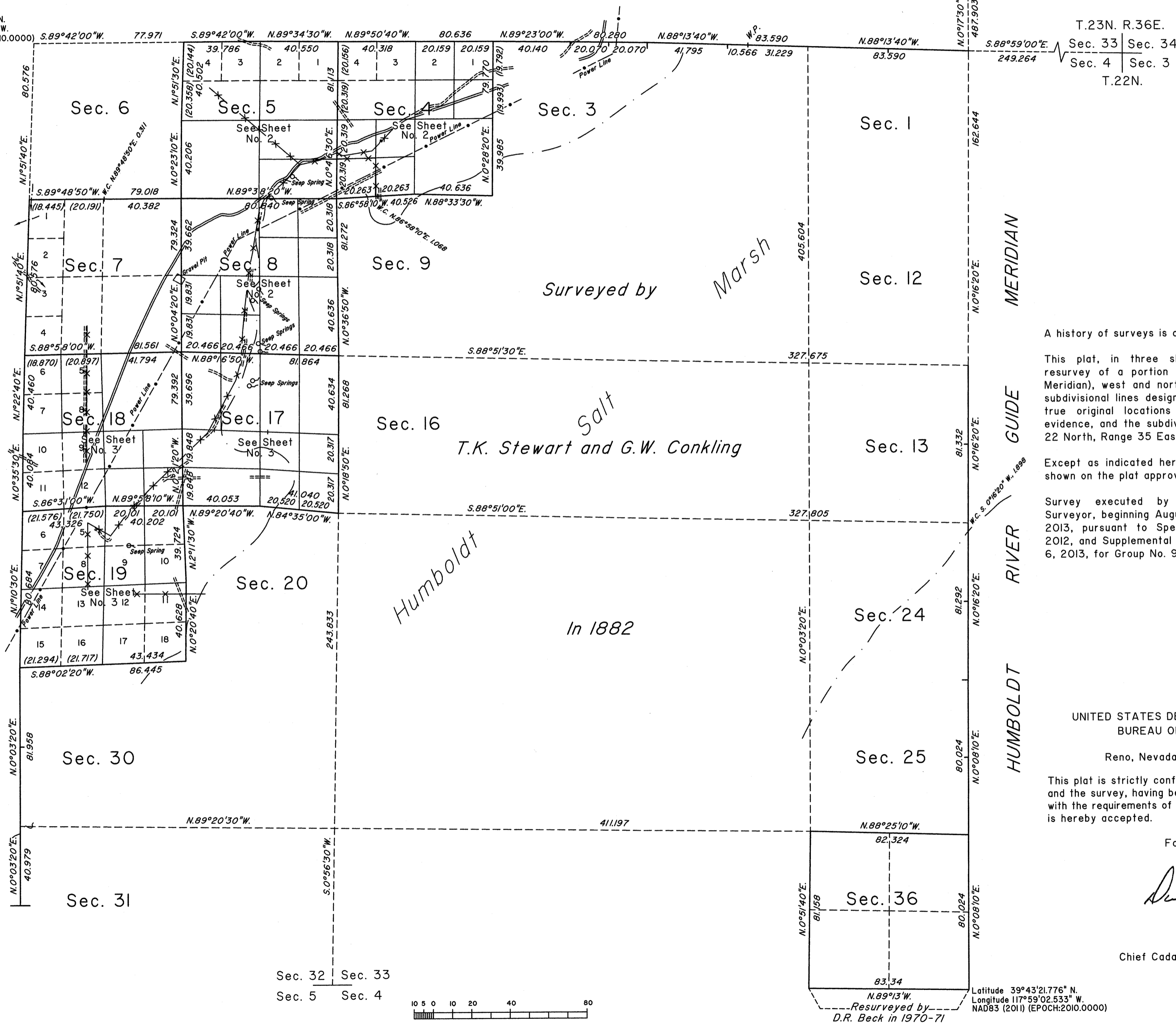
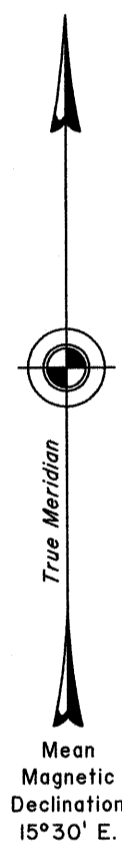
# TOWNSHIP 22 NORTH, RANGE 35 EAST, OF THE MOUNT DIABLO MERIDIAN, NEVADA

## DEPENDENT RESURVEY AND SUBDIVISION

T.24N.  
R.35E. R.36E.  
Sec. 36 Sec. 31  
Sec. 1 Sec. 6  
T.23N.

Latitude 39°48'42.137" N.  
Longitude 118°05'52.146" W.  
NAD83 (2011) (EPOCH:2010.0000)

T.23N. R.36E.  
Sec. 33 Sec. 34  
Sec. 4 Sec. 3  
T.22N.



A history of surveys is contained in the field notes.

This plat, in three sheets, represents the dependent resurvey of a portion of the east (Humboldt River Guide Meridian), west and north boundaries and a portion of the subdivision lines designed to restore the corners in their true original locations according to the best available evidence, and the subdivision of certain sections, Township 22 North, Range 35 East, Mount Diablo Meridian, Nevada.

Except as indicated hereon, the lottings and areas are as shown on the plat approved November 20, 1882.

Survey executed by Don R. Aschenbach, Cadastral Surveyor, beginning August 16, 2012 and completed May 14, 2013, pursuant to Special Instructions dated August 14, 2012, and Supplemental Special Instructions dated February 6, 2013, for Group No. 916, Nevada.

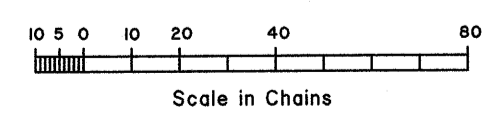
UNITED STATES DEPARTMENT OF THE INTERIOR  
BUREAU OF LAND MANAGEMENT

Reno, Nevada August 25, 2014

This plat is strictly conformable to the approved field notes, and the survey, having been correctly executed in accordance with the requirements of law and the regulations of this Bureau, is hereby accepted.

For the Director  
*David D. Mofa*

Chief Cadastral Surveyor, Nevada



Latitude 39°43'21.776" N.  
Longitude 117°59'02.533" W.  
NAD83 (2011) (EPOCH:2010.0000)

Resurveyed by  
D.R. Beck in 1970-71

OFFICIALLY FILED  
NEVADA STATE OFFICE  
AUG 27 2014