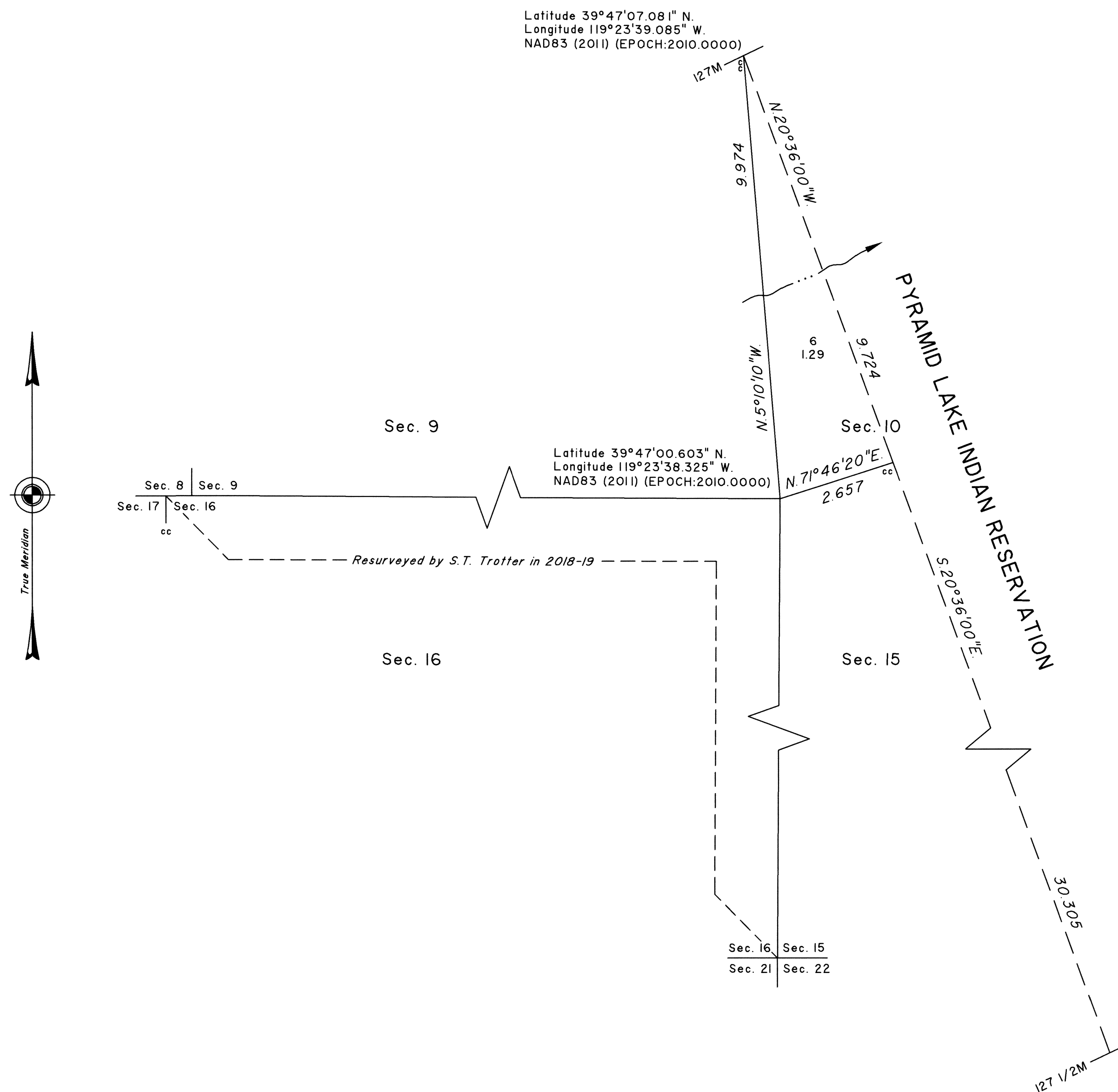


# TOWNSHIP 22 NORTH, RANGE 23 EAST, OF THE MOUNT DIABLO MERIDIAN, NEVADA

## DEPENDENT RESURVEY



A history of surveys is contained in the field notes.

This plat represents the dependent resurvey of a portion of the subdivisional lines designed to restore the corners in their true original locations according to the best available evidence, Township 22 North, Range 23 East, Mount Diablo Meridian, Nevada.

Lot 6 on this plat, was a previously unnumbered lot shown on the plat approved January 19, 1888.

Except as indicated hereon, the lottings and areas are as shown on the plats approved January 19, 1888, February 20, 1911, and May 15, 1913.

Survey executed by Miguel A. Garcia, Cadastral Surveyor, beginning August 31, 2022 and completed August 9, 2023, pursuant to Special Instruction dated August 26, 2022 for Group No. 1002, Nevada.

UNITED STATES DEPARTMENT OF THE INTERIOR  
BUREAU OF LAND MANAGEMENT

Reno, Nevada September 19, 2023

This plat is strictly conformable to the approved field notes, and the survey, having been correctly executed in accordance with the requirements of law and the regulations of this Bureau, is hereby accepted.

For the Director

*Miguel A. Garcia*

Chief Cadastral Surveyor for Nevada

T.22N., R.23E., M.D.M.