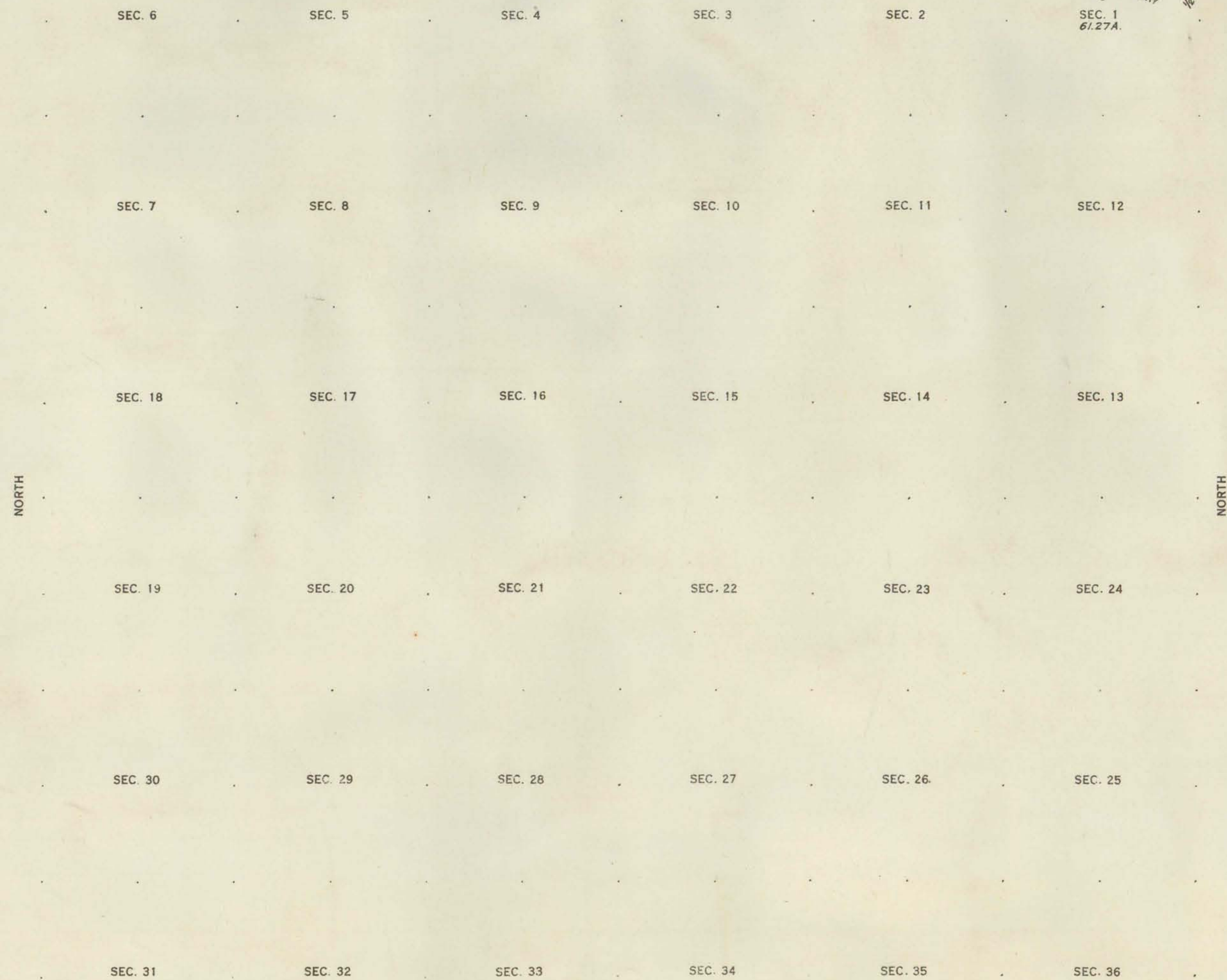
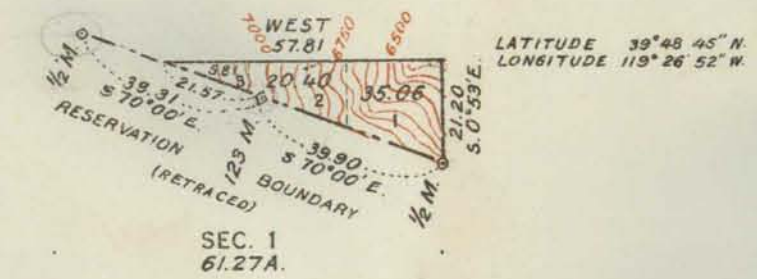
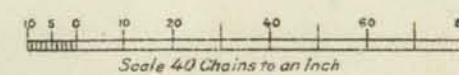


TOWNSHIP NO. 22 NORTH, RANGE NO. 22 EAST OF MOUNT DIABLO MERIDIAN, NEVADA.
PYRAMID LAKE INDIAN RESERVATION



Contour interval 50 feet

Note: Curved lines or contours, are lines of equal elevation, and represent approximately the form of the earth's surface and the altitude above sea level.



TOTAL NUMBER OF ACRES 61.27

SURVEYS DESIGNATED	BY WHOM SURVEYED	AMOUNT OF SURVEYS M. CHS. LKS.	WHEN SURVEYED
STANDARD LINES	G. P. HARRINGTON.	_____	JUNE 12, JULY 9, 1911.
TOWNSHIP	"	_____	
SUBDIVISION	"	_____	
MEANER	"	_____	JUNE 8, 1911.
BOUNDARY	"	_____	JULY 9, 1911
CONNECTIONS	"	_____	

A. F. DUNNINGTON, Topographer in charge. Instructions April 27, 1911.

THE ABOVE MAP, OF TOWNSHIP NO 22 NORTH, RANGE NO 22 EAST OF MOUNT DIABLO MERIDIAN, NEVADA, IS STRICTLY CONFORMABLE TO THE FIELD NOTES OF THE SURVEY THEREOF ON FILE IN THIS OFFICE, WHICH HAVE BEEN EXAMINED AND APPROVED

U. S. GENERAL LAND OFFICE

WASHINGTON, D. C.
MAY 15, 1913.

Commissioner.