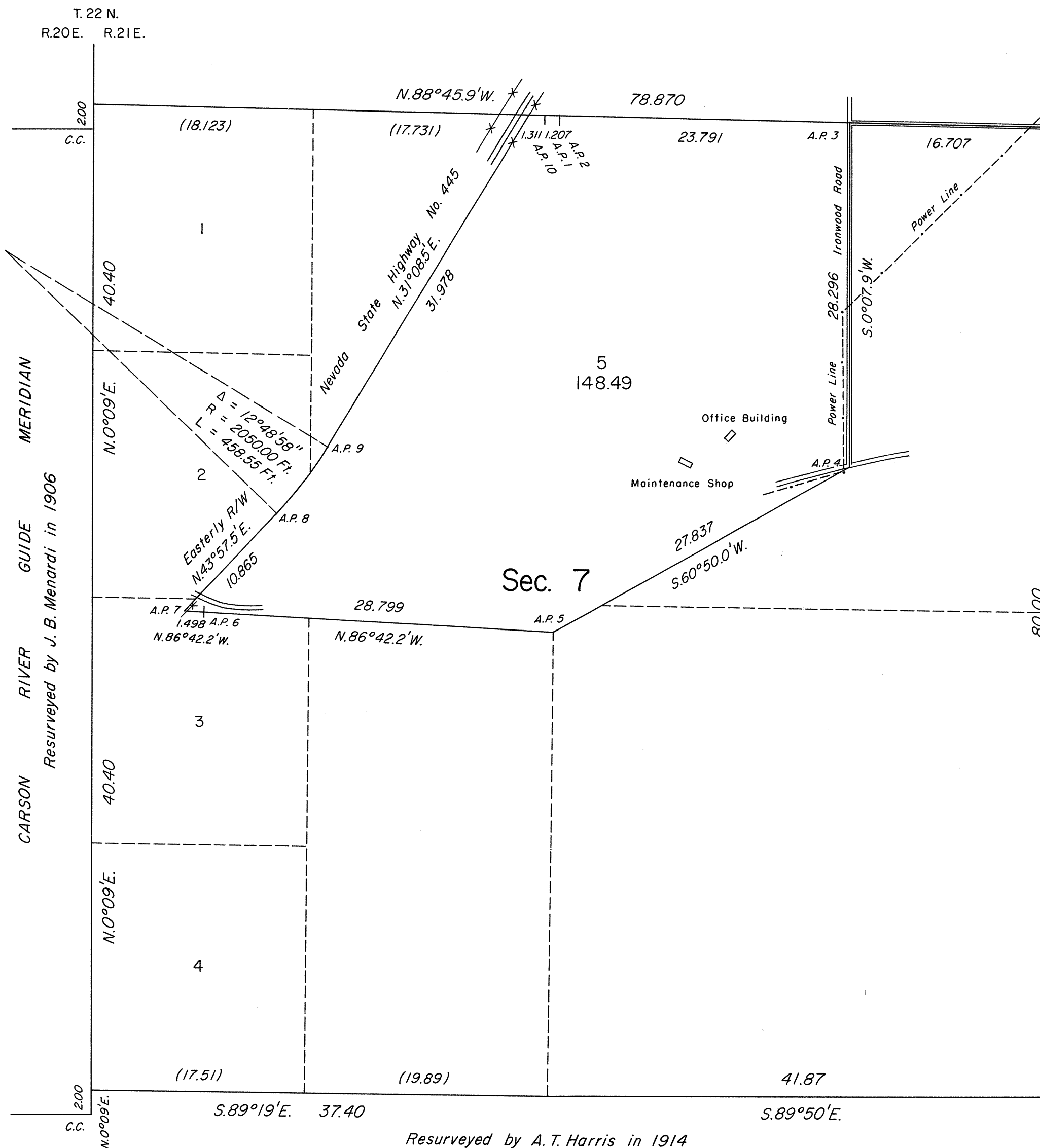
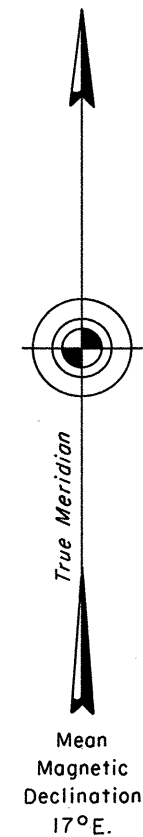


TOWNSHIP 22 NORTH, RANGE 21 EAST, OF THE MOUNT DIABLO MERIDIAN, NEVADA  
DEPENDENT RESURVEY

Sec. 1

Sec. 12



Latitude 39° 47' 47.93" N.  
Longitude 119° 39' 28.22" W.  
NAD 27

Surveyed by D. H. Barker and J. H. Eaton in 1878

History of the earlier surveys is contained in the field notes.

This plat represents a dependent resurvey of a portion of the subdivisional lines, designed to restore the corners in their true original locations according to the best available evidence; and the metes-and-bounds survey of Lot No. 5, in Sec. 7, T. 22 N., R. 21 E., Mount Diablo Meridian, Nevada.

Lottings and areas, except as indicated hereon, are as shown on the plat approved February 8, 1879.

Survey executed by Robert A. Pratt, Cadastral Surveyor, beginning August 28, 1991 and completed May 4, 1992, under Special Instructions dated July 11, 1991, for Group 707, Nevada.

UNITED STATES DEPARTMENT OF THE INTERIOR  
BUREAU OF LAND MANAGEMENT

Reno, Nevada July 22, 1992

This plat is strictly conformable to the approved field notes, and the survey, having been correctly executed in accordance with the requirements of law and the regulations of this Bureau, is hereby accepted.

For the Director

*John S. Parish*

Chief Cadastral Surveyor, Nevada

T.22N., R.21E., M.D.M.