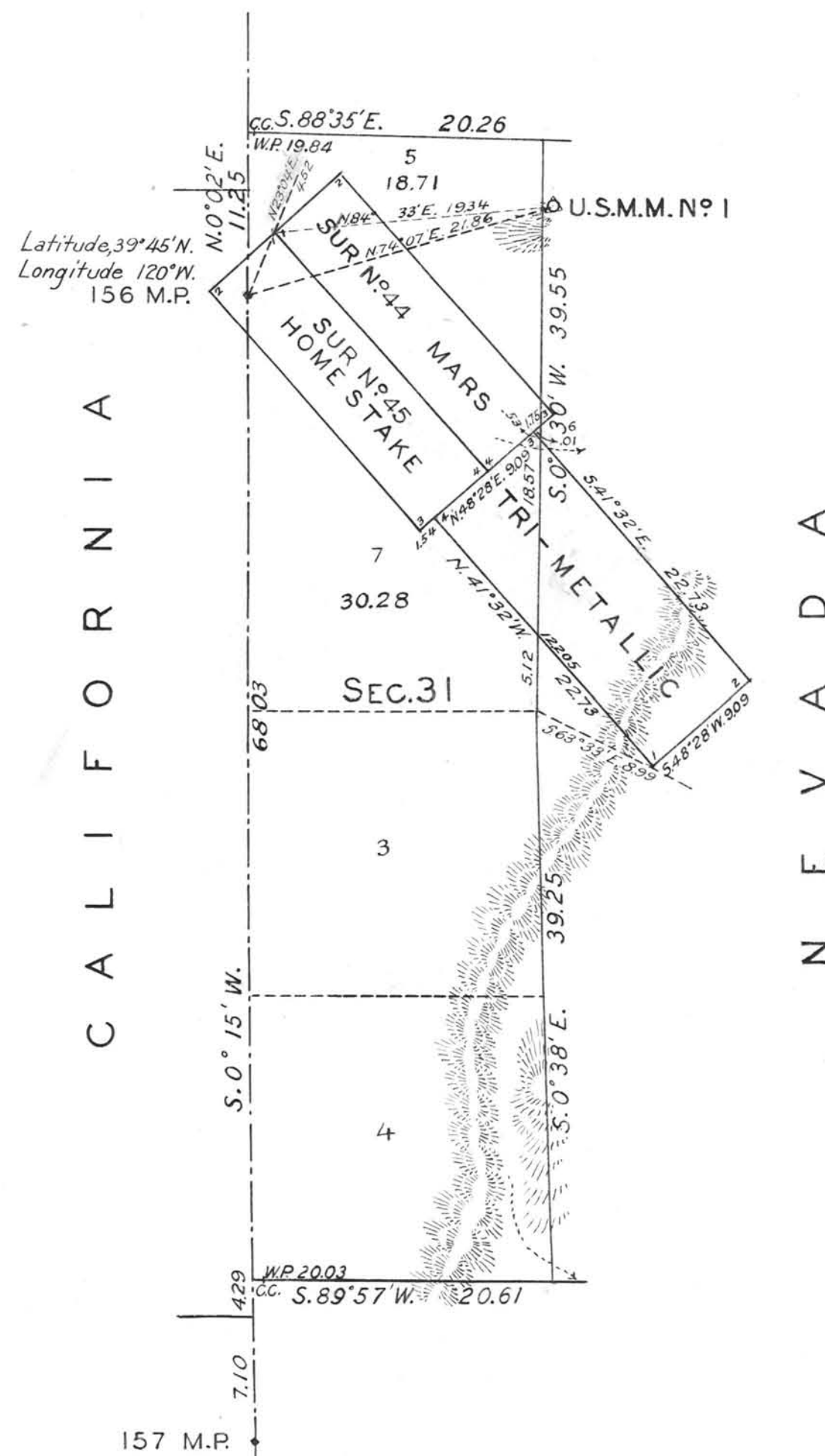


TOWNSHIP N°22 NORTH RANGE N°18 EAST

OF THE MOUNT DIABLO MERIDIAN NEVADA

SUPPLEMENTAL PLAT OF SEC.31

SCALE 10 CHS. TO 1 INCH



Dependent resurvey of the boundaries of Sec. 31, and survey of connecting lines, deriving lottings of fractional areas created by the segregation of the Mars and Homestake lodes, mineral surveys Nos. 44 and 45 respectively, also metes and bounds survey of the boundaries of the Tri-Metallic lode, land classified as mineral bearing, and connecting lines deriving lottings of fractional areas of adjoining nonmineral land, to accommodate the Central Pacific Railway Co's, selection list No. 38, Carson City 01629, executed by Carl S. Swankholm, U.S. Cadastral Engineer, June 15-25, 1929, under special instructions dated Mar. 3, 1925, for Group No. 126, Nevada, authorized by the Commissioner's letter "E" dated January 9, 1925.

Boundaries of Section 31, surveyed by T.K. Stewart D.S. in 1900, as shown upon plat approved June 8, 1901. Surveys Nos. 44 and 45, Mars and Homestake lodes respectively, surveyed by J.D. Parks, U.S. Mineral Surveyor, as shown upon plats approved September 23, 1887.

Office of U.S. Supervisor of Surveys
Denver, Colorado, Feb. 24, 1931

The above supplemental plat of Sec. 31, Township No. 22 North, Range No. 18 East of the Mount Diablo Meridian, Nevada, is strictly conformable to the field notes of the survey thereof which have been examined and approved

Wm. H. Simon
U.S. Supervisor of Surveys

DEPARTMENT OF THE INTERIOR
GENERAL LAND OFFICE

Washington, D.C., August 17, 1931
The survey represented by this plat having been correctly executed in accordance with the requirements of law and the regulations of this office, is hereby accepted.

J. H. Cannon
Acting Assistant Commissioner

0040

T. 22 N. R. 18 E.