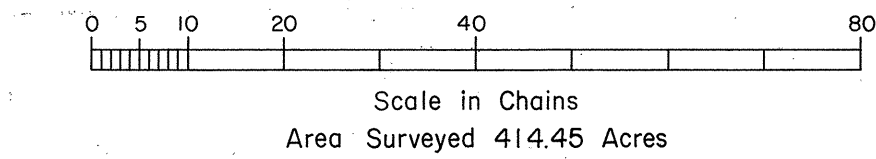
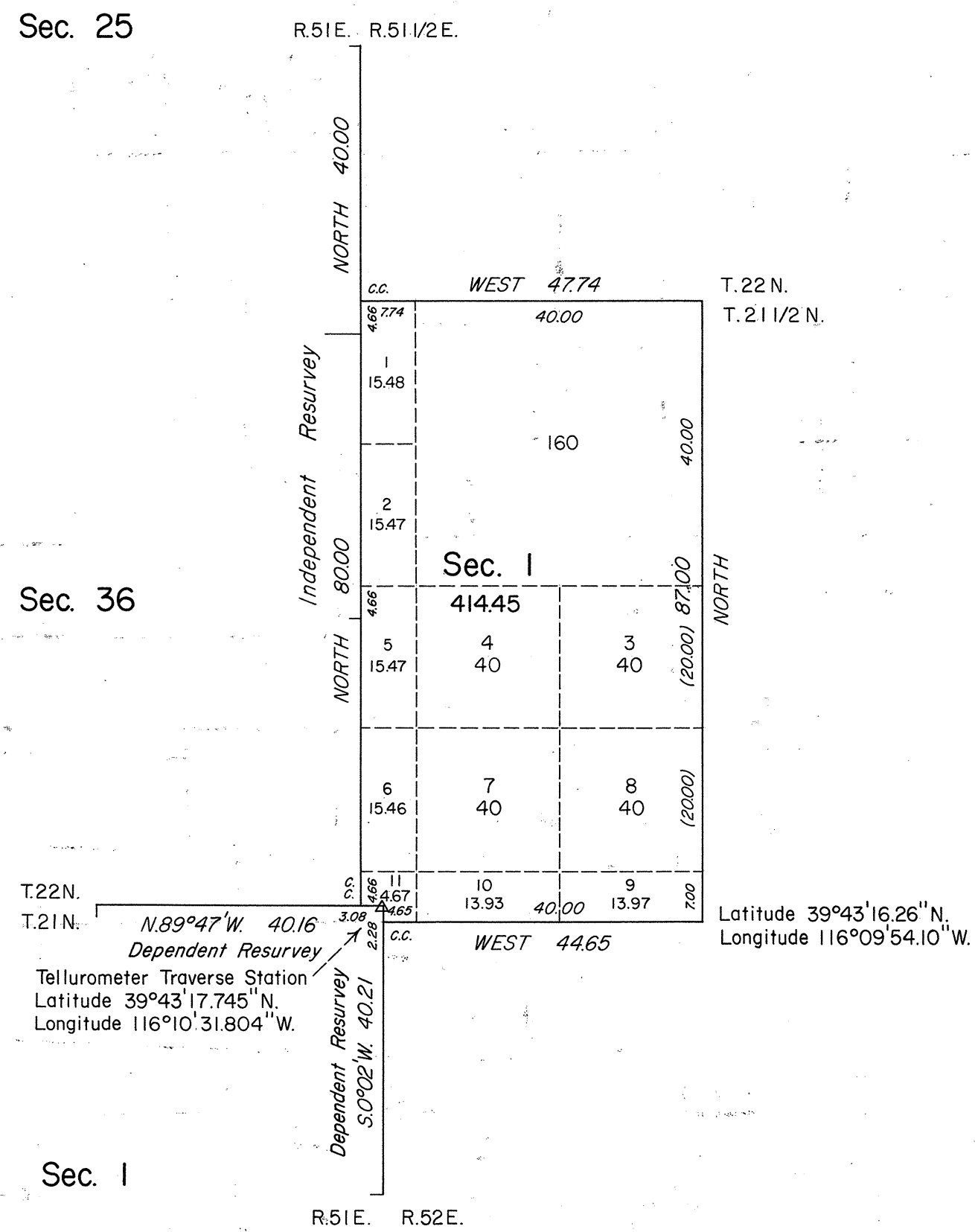
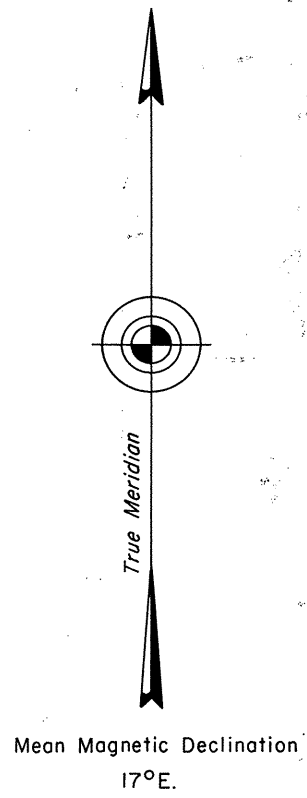


TOWNSHIP 21 1/2 NORTH, RANGE 51 1/2 EAST, OF THE MOUNT DIABLO MERIDIAN, NEVADA

OFFICIALLY FILED
NEVADA STATE OFFICE
10:00 A.M. JULY 20, 1984



History of the earlier surveys is contained in the field notes.

A dependent resurvey of a portion of the north and east boundaries of T. 21 N., R. 51 E., an independent resurvey of the east boundary of T. 22 N., R. 51 E. and the survey of the east boundary were executed concurrently under this same Group.

This plat represents a survey of the south and north boundaries of T. 21 1/2 N., R. 51 1/2 E.

Survey executed by John A. Farmer, Cadastral Surveyor, beginning June 28, 1983 and completed July 25, 1983, under Special Instructions dated June 6, 1983, for Group 608, Nevada.

UNITED STATES DEPARTMENT OF THE INTERIOR
BUREAU OF LAND MANAGEMENT

Reno, Nevada April 25, 1984

This plat, is strictly conformable to the approved field notes, and the survey, having been correctly executed in accordance with the requirements of law and in the regulations of this Bureau, is hereby accepted.

For the Director

Lael E. Bland

Chief Cadastral Surveyor