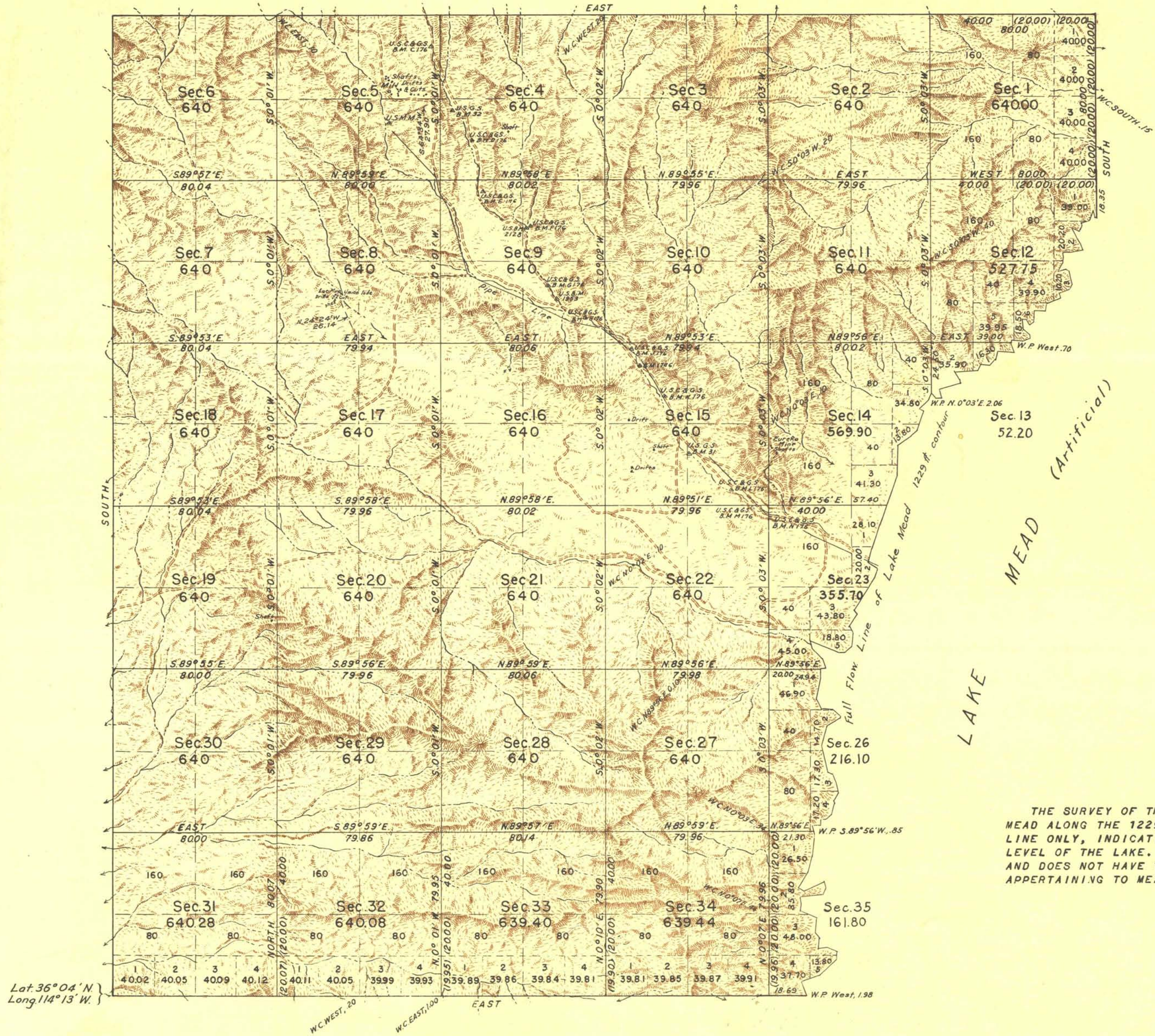


TOWNSHIP N° 21 SOUTH, RANGE N° 70 EAST OF THE MOUNT DIABLO MERIDIAN, NEVADA.

FIFTH STANDARD PARALLEL SOUTH



Lat. 36° 04' N
Long. 114° 13' W

Scale: 40 Chains to an Inch

Area Surveyed 19162.65 Acs

LINES DESIGNATED	BY WHOM SURVEYED	N°	GROUP		WHEN SURVEYED	
			DATE OF SPECIAL INSTRUCTIONS	BEGUN	COMPLETED	
Exterior	James W. Hardison	256	Oct. 7 1938	Feb. 20, 1939	April 28, 1942	
Subdivisional	and	"	" " "	" " "	" " "	
Traverse	Wilson Mc Conkie	"	" " "	" " "	" " "	

UNITED STATES DEPARTMENT OF THE INTERIOR
GENERAL LAND OFFICE

DENVER, COLORADO, NOVEMBER 1, 1944.
THIS PLAT OF TOWNSHIP NO. 21 SOUTH, RANGE NO. 70 EAST, OF THE MOUNT DIABLO MERIDIAN, NEVADA, IS STRICTLY CONFORMABLE TO THE FIELD NOTES OF THE SURVEY THEREOF WHICH HAVE BEEN EXAMINED AND APPROVED.

WASHINGTON, D. C., JAN 30 1945
THE SURVEY REPRESENTED BY THIS PLAT HAVING BEEN CORRECTLY EXECUTED IN ACCORDANCE WITH THE REQUIREMENTS OF LAW AND THE REGULATIONS OF THIS OFFICE, IS HEREBY ACCEPTED.

W. H. Hart
SUPERVISOR OF SURVEYS

Joel David Wolfson
ASSISTANT COMMISSIONER

T.H.D.

T. 21 S. - R. 70 E.