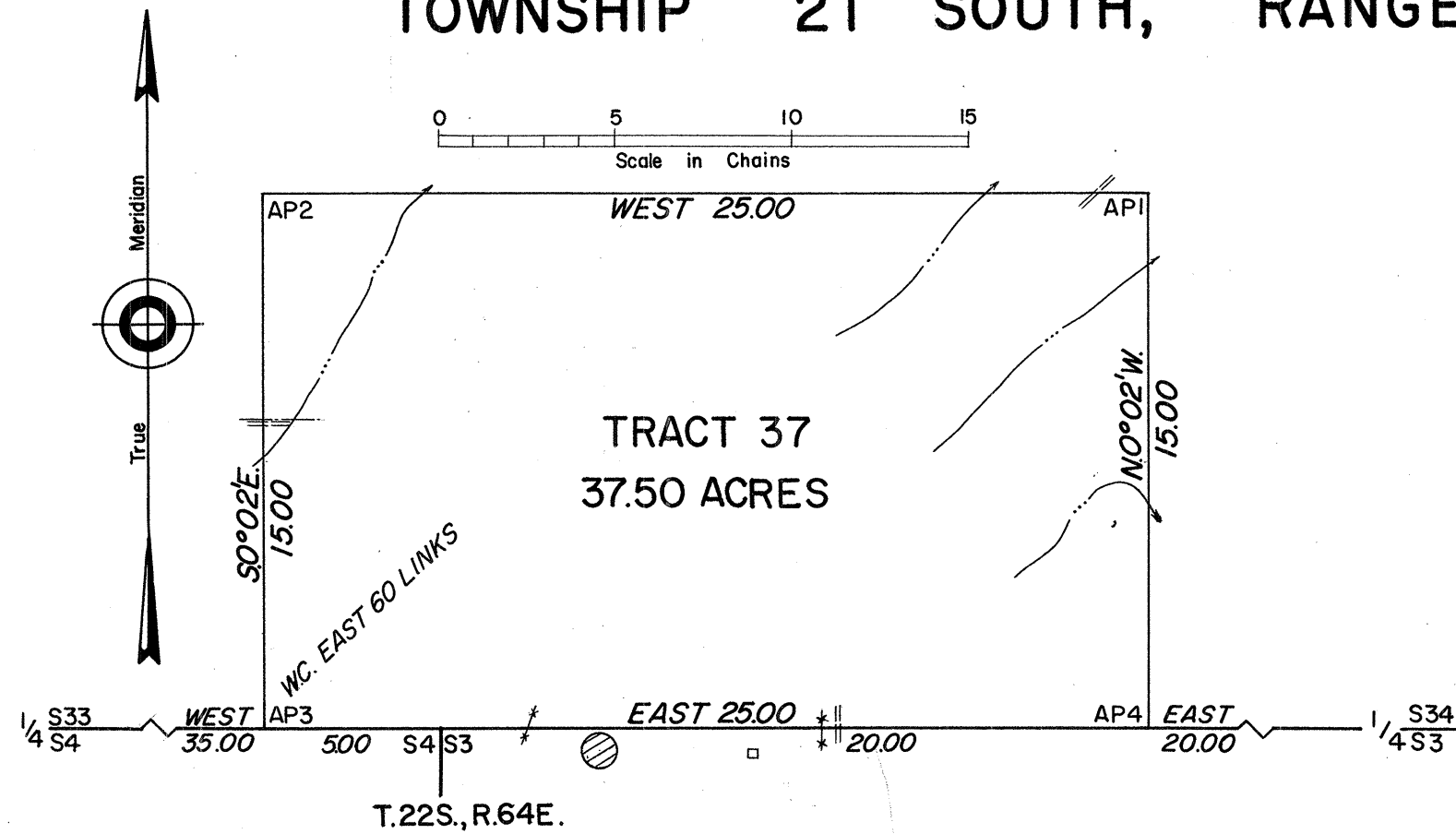


TOWNSHIP 21 SOUTH, RANGE 64 EAST, MOUNT DIABLO MERIDIAN, NEVADA

TRACT 37



TRACT 37
37.50 ACRES

T.22S., R.64E.

FIELD NOTES OF SURVEY

This survey of Tract 37, for 37.50 acres, located in the SE. portion of sec. 33, and SW. portion of sec. 34, in unsurveyed T. 21 S., R. 64 E., was made at the request of the State Director, in order to carry out the provisions of Private Law No. 854, 89th Congress. The Independent Resurvey of the North Boundary, T. 22 S., R. 64 E., was executed by Carl S. Swanholm, under Group 169, Nevada, as shown on the township plat approved April 10, 1933.

Surveys as represented hereon were executed with a Gurley Solar Transit, constructed in accordance with Bureau of Land Management specifications. The transit was in good condition and was placed in precise adjustment, prior to undertaking this survey. Directions of all lines refer to the true meridian, and were determined from the true line between the 1/4 sec. cor. of secs. 3 and 34, and the corner of secs. 3, 4, 33 and 34, and the 1/4 sec. cor. of secs. 4 and 33, on the N. bdy., of T. 22 S., R. 64 E. Distances are expressed in chains, measured on the slope, and reduced to horizontal equivalents.

At the point for AP 1, NE. cor. of Tract 37.
Set an iron post, 30 ins. long, 2 1/2 ins. diam., 24 ins. in the ground, with brass cap mkd.

T21S R64E
S 34
Tract 37
AP 1
1962

Raise a mound of stone, 3 1/2 ft. base, 2 1/2 ft. high, SW. of cor.
From this corner, the true position for the W 1/16 sec. cor. of secs. 3 and 34 on the N. bdy., of T. 22 S., R. 64 E., bears S. 00° 02' E., 15.00 chs. dist.
Thence, west, along the N. bdy., Tract 37, on the line bet. AP 1 and AP 2.

- 1.40 Track road, bears NE. and SW., on top of spur, sloping NE., desc. 120 ft. over NW slope.
- 4.60 Wash, 15 lks. wide, 2 ft. deep, drains NE., asc. 130 ft. over SE. slope.
- 10.00 Top of spur, slopes NE., desc. over gradual NNW. slope.
- 20.50 Wash, 40 lks. wide, 1 ft. deep, drains NE., asc. 20 ft. over vertical cliff.
- 22.74 Top of spur, slopes NE., desc. 20 ft. over WNW. slope.
- 24.90 Wash, 10 lks. wide, 3 ft. deep, at N. end of concrete spillway, 3 ft. wide, 3 ft. deep, drains NE. A small building, covered with corrugated iron, at spillway outlet, bears SSW., approximately 1.60 ch. dist.
- 25.00 Point for AP 2, Tract 37.
Set an iron post, 30 ins. long, 2 1/2 ins. diam., 24 ins. in the ground, with brass cap mkd.

I hereby certify upon honor that in pursuance of Special Instructions for Group 397, Nevada, bearing date of February 26, 1962, and Assignment Instructions dated March 16, 1962, I surveyed on April 27, 1962, Tract 37, located in the southern portion of Section 33 and 34 in unsurveyed T. 21 S., R. 64 E., Mount Diablo Meridian, in the State of Nevada, which is represented by this diagram and field notes of survey, and that said survey has been made in strict conformity with said instructions, the manual of instructions for survey of the Public Lands of the United States, and in the specific manner described in the notes of the survey.

January 22, 1963

Horace G. Parker
Horace G. Parker
Cadastral Surveyor

Area surveyed: 37.50 Acres

T21S R64E
S 33
AP 2
Tract 37
1962

- S. 0° 02' E., along the W. bdy., Tract 37, on the line bet. AP 2 and AP 3., asc. 70 ft. over N. slope.
- 1.20 Small building, covered with corrugated iron, at spillway outlet, bears E., 50 lks. dist.
- 6.70 Power line and road, bears E. and W.
- 7.30 Wash, 10 lks. wide, 2 ft. deep, drains NE.
- 13.10 Top of ascent; edge bears NW. and SE., desc. 40 ft. over abrupt WSW. slope.
- 15.00 Intersect N. bdy. of sec. 4, T. 22 N., R. 64 E., at the point for the 1/256 sec. cor. of secs. 4 and 33, identical with AP 3, Tract 37. This point falls on an oiled state highway. Not monumented.

- East along the S. bdy., Tract 37, on the line bet. AP 3 and AP 4, identical with the N. bdy. of sec. 4, T. 22 S., R. 64 E. Asc. 40 ft. over vertical cliff.
- .40 Top of ascent; edge bears NW. and SE.
- .60 Point selected for the witness 1/256 sec. cor. of secs. 4 and 33, identical with AP 3, Tract 37.
Set an iron post, 30 ins. long, 2 1/2 ins. diam., 24 ins. in the ground, with brass cap mkd.

T21S R64E
S 33
Tract 37
AP 3
1/256
T22S R64E
S 4
1962

- Raise a mound of stone, 3 1/2 ft. base, 2 1/2 ft. high, NE of cor.
From this corner, the 1/4 sec. cor. of secs. 4 and 33, Tps. 21 and 22 S., R. 64 E., which is an iron post, 1 in. diam., firmly set in ground, with brass cap marked and witnessed as described in the official record, bears west, 35.60 chs. dist.
- 5.00 The cor. of secs. 3, 4, 33, and 34, on the N. bdy. of the Tp., which is monumented with an iron post, 2 1/2 ins. diam., firmly set in ground, with brass cap marked and witnessed as described in the official record. Continue along N. bdy., sec. 3, T. 22 S., R. 64 E., identical with S. bdy., Tract 37, on the line bet. AP 3 and AP 4.
- 7.47 Woven wire fence, 6 ft. high, 2 barbed wires on top, bears NNE. and SSW.
- 9.50 N. side of circular water tank, covered, approximately 50 ft. diam., City of Henderson.
- 13.90 Cement building, power plant, bears south, 50 lks. dist.
- 15.80 Woven wire fence, 6 ft. high, 2 barbed wires on top, bears N. and S.
- 16.20 Track road, bears N. and S.
- 25.00 Point for the W 1/16 sec. cor. of secs. 3 and 34, on N. bdy. of T. 22 S., R. 64 E., identical with AP 4, Tract 37.
Set an iron post, 30 ins. long, 2 1/2 ins. diam., 24 ins. in the ground, with brass cap mkd.

T21S R64E
S 34
Tract 37
W1/16 AP 4
S 3
T22S R64E
1962

- Raise a mound of stone, 3 1/2 ft. base, 2 1/2 ft. high, N. of cor.
From this corner, the 1/4 sec. cor. of secs. 3 and 34, Tps. 21 and 22 S., R. 64 E., which is an iron post, 1 in. diam., firmly set in ground, with brass cap marked and witnessed as described in the official record, bears east, 20.00 chs. dist.
- N. 0° 02' W., along the E. bdy., Tract 37, on the line between AP 4 and AP 1., desc. 30 ft. over N. slope.
- 6.40 Wash, 10 lks. wide, 2 ft. deep, drains ESE., asc. 25 ft. over S. slope.
- 9.40 Top of spur, slopes NE., desc. 20 ft. over N. slope.
- 13.10 Wash, 5 lks. wide, 1 ft. deep, drains NE., asc. gradual ESE. slope to corner.
- 15.00 AP 1, NE. cor. of Tract 37, heretofore described.

UNITED STATES DEPARTMENT OF THE INTERIOR
BUREAU OF LAND MANAGEMENT
WASHINGTON, D. C. AUGUST 16, 1963

This plat is strictly conformable to the above field notes of survey, which have been critically examined and found correct, and are hereby approved, and the survey, having been properly executed in accordance with the requirements of law and the regulations of this Bureau, is hereby accepted.

For the Director
E. J. Pennington
Chief, Division of Engineering