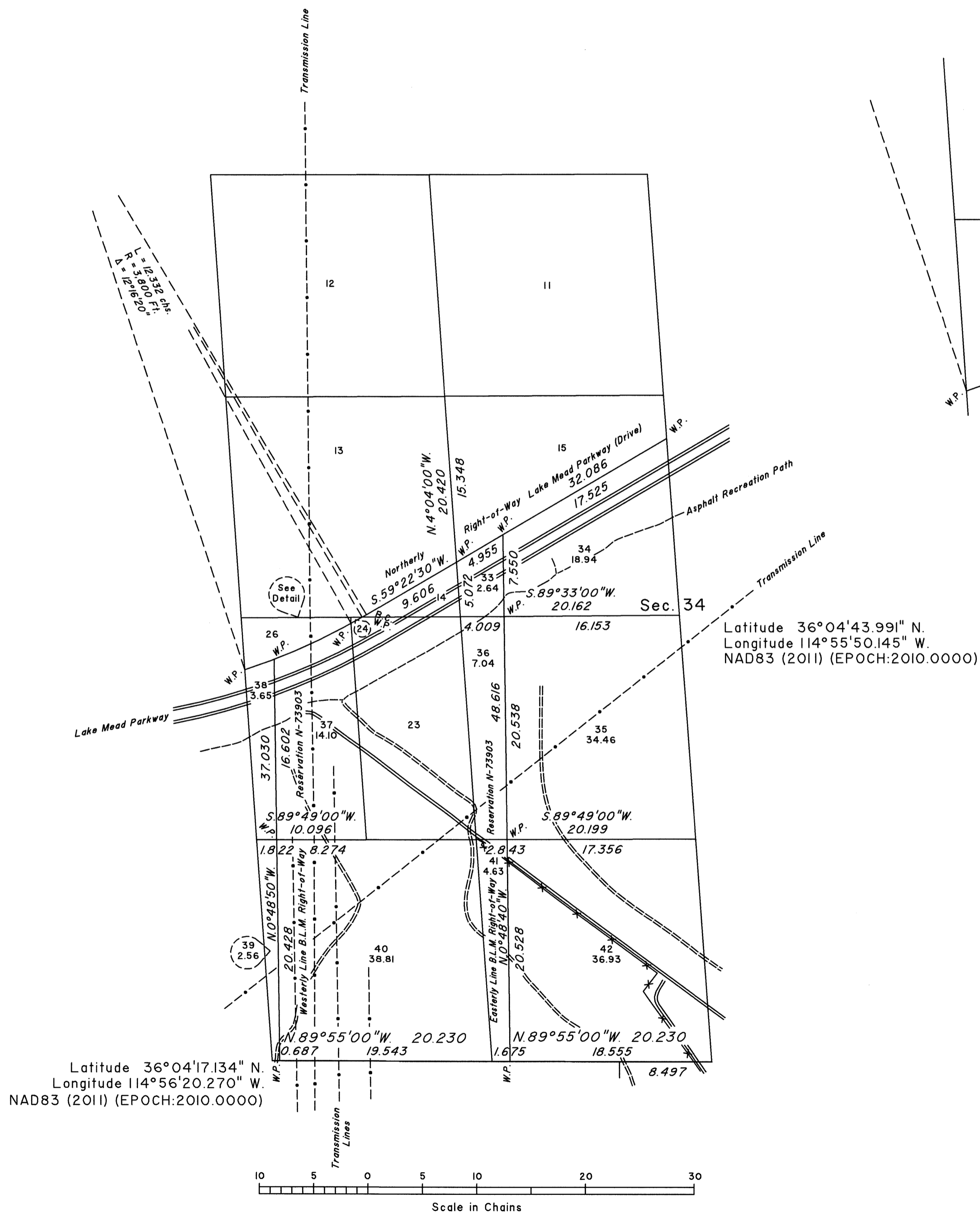
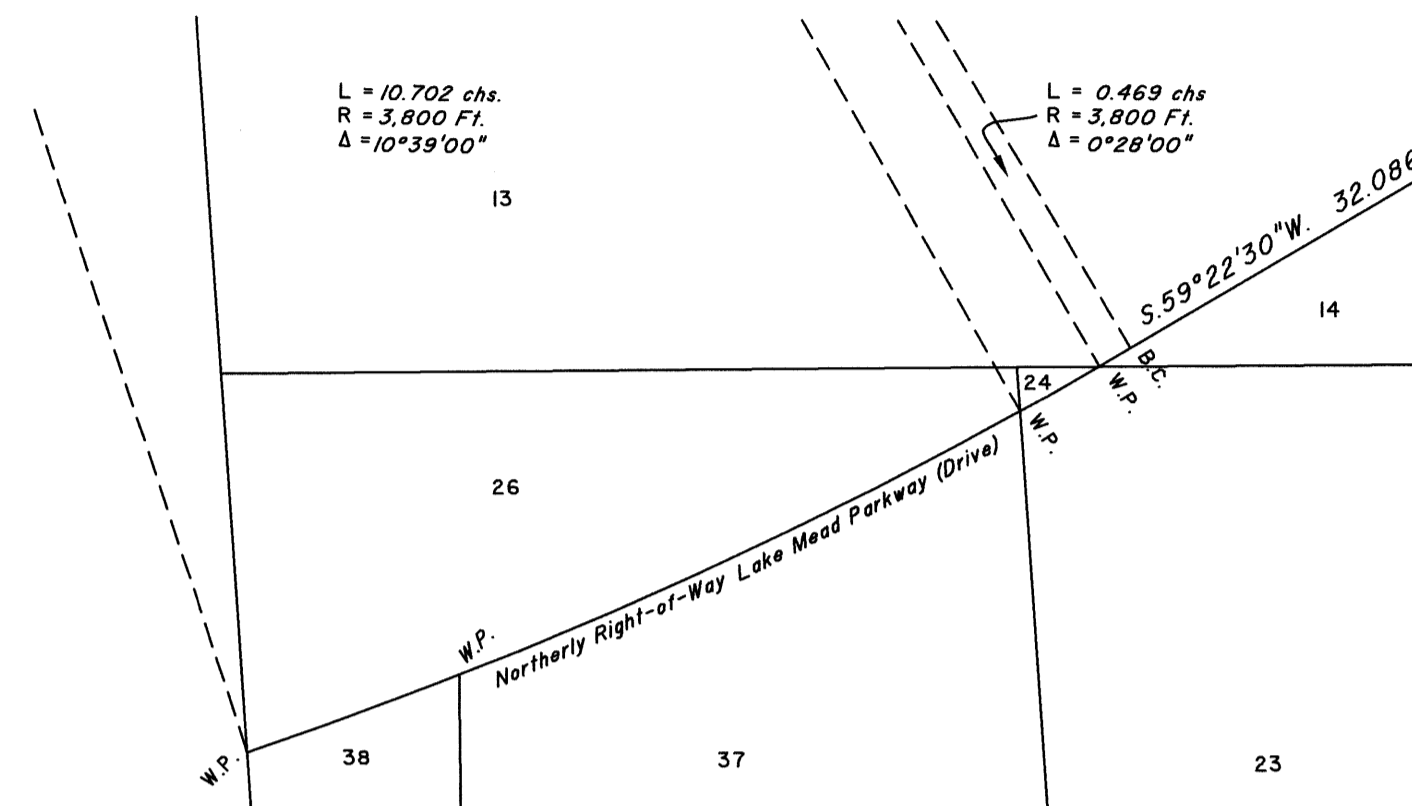


TOWNSHIP 21 SOUTH, RANGE 63 EAST, OF THE MOUNT DIABLO MERIDIAN, NEVADA

DEPENDENT RESURVEY AND METES-AND-BOUNDS SURVEYS



DETAIL
Not to Scale



A history of surveys is contained in the field notes.

This plat represents the dependent resurvey of a portion of the south boundary, a portion of the subdivision-of-section lines of section 34 and portions of a metes-and-bounds survey of a portion of the northerly right-of-way of Lake Mead Parkway (Drive), designed to restore the corners in their true original locations according to the best available evidence, and metes-and-bounds surveys of a portion of the easterly and westerly lines of Bureau of Land Management Right-of-Way Reservation N-73903, Township 21 South, Range 63 East, Mount Diablo Meridian, Nevada.

Except as indicated hereon, the lottings and areas are as shown on the plat accepted September 10, 1996.

For those surveyed lines not showing bearings and distances, refer to the official record of 1996.

Survey executed by Lee T. Wilson, Cadastral Surveyor, beginning April 29, 2016 and completed June 30, 2017, pursuant to Special Instructions dated April 28, 2016, for Group No. 962, Nevada

UNITED STATES DEPARTMENT OF THE INTERIOR
BUREAU OF LAND MANAGEMENT

Reno, Nevada August 5, 2022

This plat is strictly conformable to the approved field notes, and the survey, having been correctly executed in accordance with the requirements of law and the regulations of this Bureau, is hereby accepted.

For the Director

Chief Cadastral Surveyor for Nevada