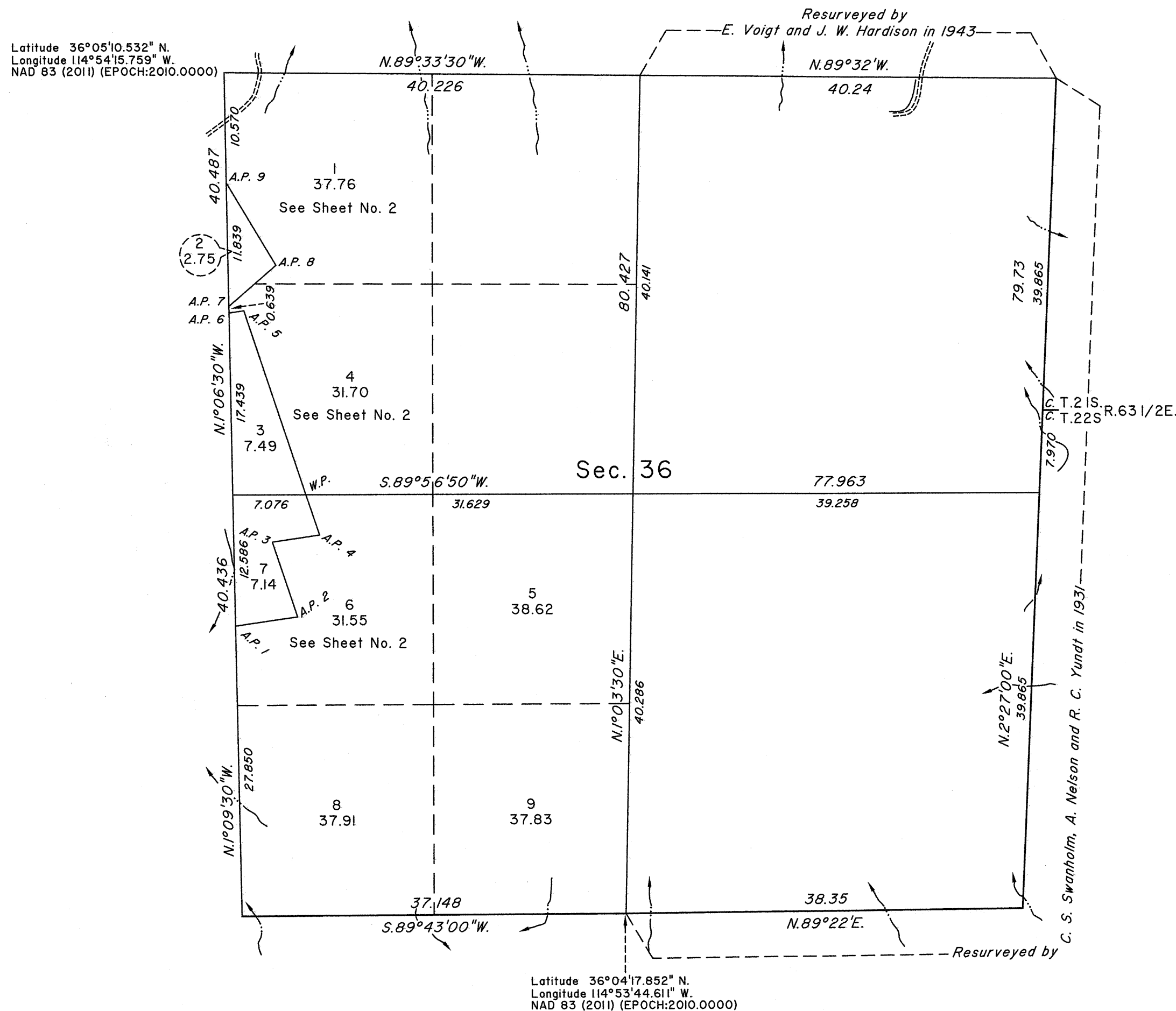


TOWNSHIP 21 SOUTH, RANGE 63 EAST, OF THE MOUNT DIABLO MERIDIAN, NEVADA
DEPENDENT RESURVEY, SUBDIVISION AND METES-AND-BOUNDS SURVEY

OFFICIALLY FILED
NEVADA STATE OFFICE
at 10:00 AM on APR 09 2015



This plat, in two sheets, represents the dependent resurvey of a portion of the south boundary and a portion of the subdivisional lines designed to restore the corners in their true original locations according to the best available evidence and the subdivision of section 36 and a metes-and-bounds survey in section 36, Township 21 South, Range 63 East, Mount Diablo Meridian, Nevada.

Except as indicated hereon, the lottings and areas are as shown on the plat approved February 6, 1884 and the plat accepted August 28, 1943.

Survey executed by Bradley F. Dillon, Cadastral Surveyor, beginning February 26, 2015 and completed March 3, 2015, pursuant to Special Instructions dated February 11, 2015, for Group No. 940, Nevada.

UNITED STATES DEPARTMENT OF THE INTERIOR
BUREAU OF LAND MANAGEMENT

Reno, Nevada April 9, 2015

This plat is strictly conformable to the approved field notes, and the survey, having been correctly executed in accordance with the requirements of law and the regulations of this Bureau, is hereby accepted.

For the Director

Michael C. Hammer

Chief Cadastral Surveyor for Nevada

