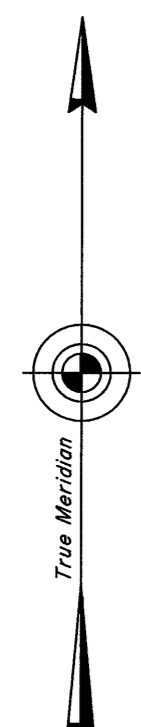
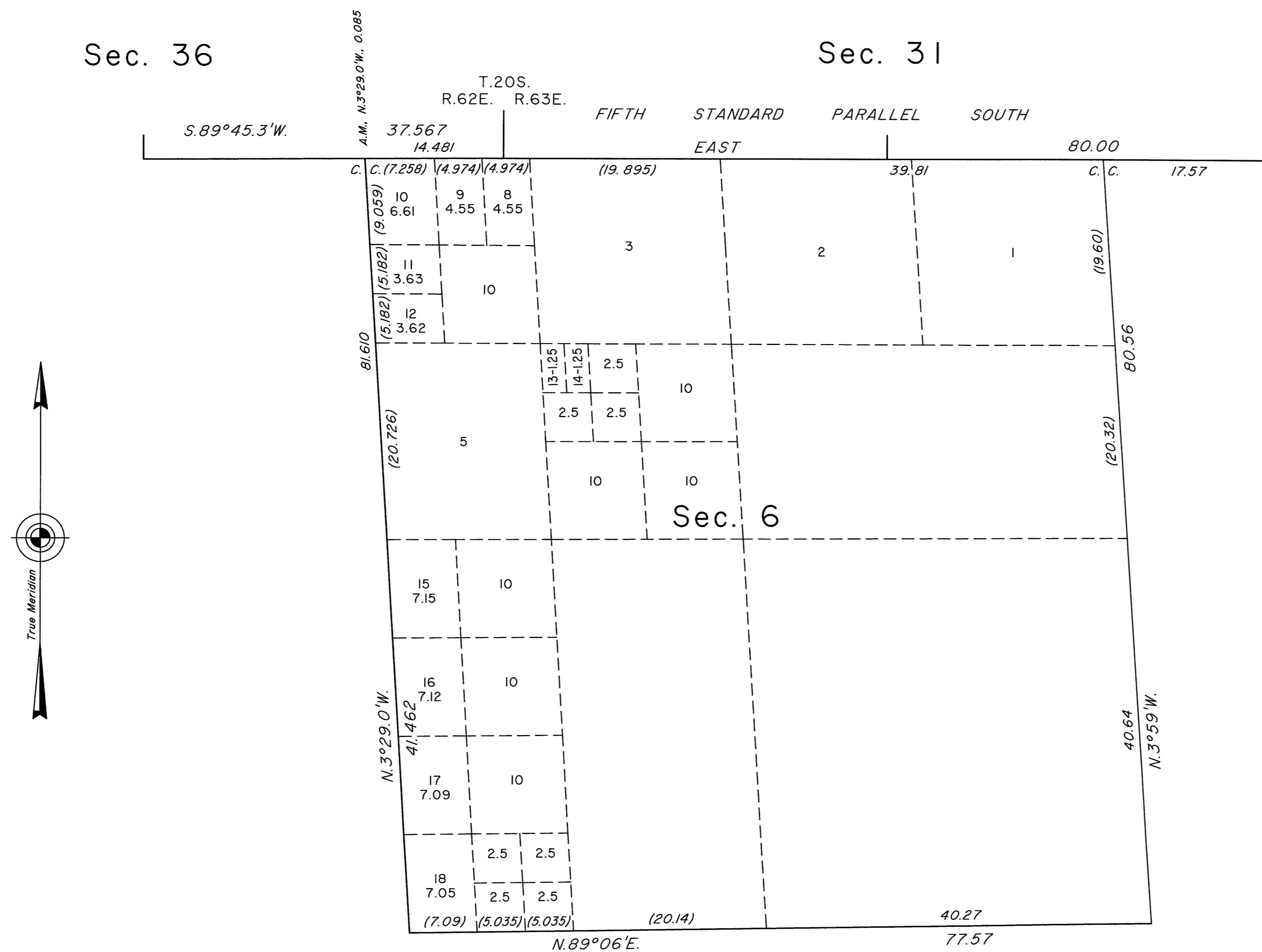


TOWNSHIP 21 SOUTH, RANGE 63 EAST, OF THE MOUNT DIABLO MERIDIAN, NEVADA
SUPPLEMENTAL PLAT OF SECTION 6

OFFICIALLY FILED
NEVADA STATE OFFICE
at 10:00 AM on October 26, 2012

Sec. 36

Sec. 31



This plat showing a subdivision of the SE1/4 of the NW1/4 and a subdivision of the former lots 4, 6 and 7, section 6, Township 21 South, Range 63 East, Mount Diablo Meridian, Nevada, based on the plat approved February 6, 1884 and the plat accepted August 28, 1943, and also the plat of Township 21 South, Range 62 East, Mount Diablo Meridian, Nevada, accepted August 30, 1994, is prepared to accommodate a direct land sale under provisions of the Federal Land Policy and Management Act.

Plat prepared by Clay W. Morrow, Cartographic Technician, beginning August 30, 2012 and completed October 17, 2012, pursuant to special instructions dated August 30, 2012 and assignment instructions dated August 30, 2012, for Group No. 917, Nevada.

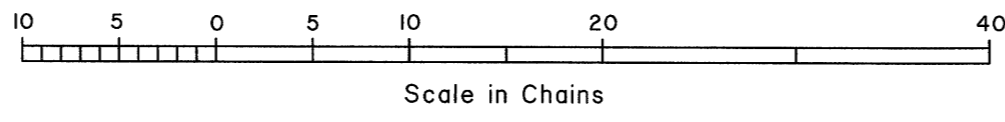
Except as indicated hereon, the lotting and areas are shown on the plat approved February 6, 1884, and the plat accepted August 28, 1943.

UNITED STATES DEPARTMENT OF THE INTERIOR
BUREAU OF LAND MANAGEMENT
Reno, Nevada October 24, 2012

This plat, showing amended lottings, is based upon the official records and, having been correctly prepared in accordance with the requirements of the law and regulations of this Bureau, is hereby accepted.

For the Director

Chief Cadastral Surveyor for Nevada



CWM

T.21S., R.63E., M.D.M.