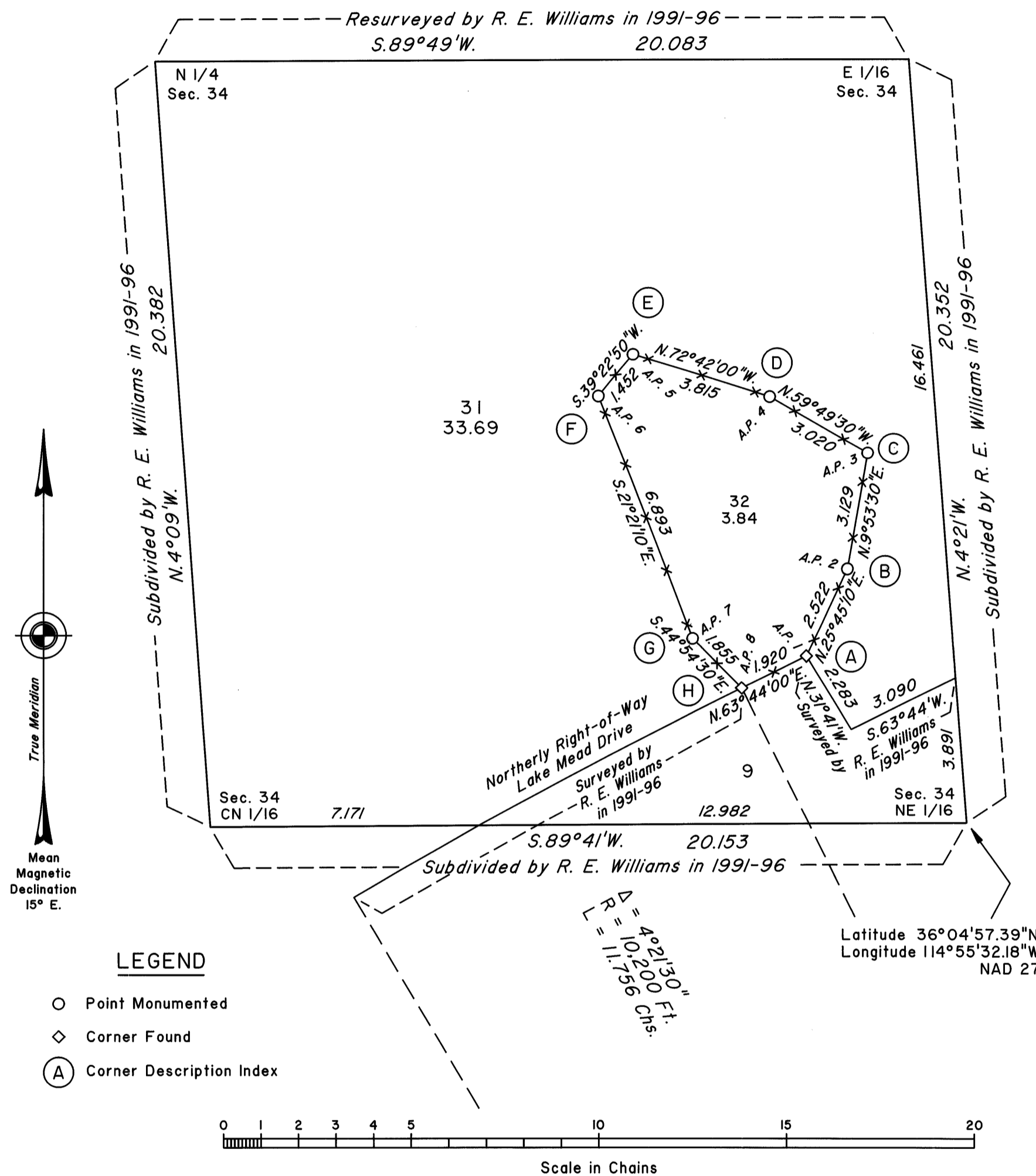


TOWNSHIP 21 SOUTH, RANGE 63 EAST, OF THE MOUNT DIABLO MERIDIAN, NEVADA
DEPENDENT RESURVEY AND METES-AND-BOUNDS SURVEY IN SECTION 34



I, Richard A. Zaninovich, Cadastral Surveyor, HEREBY CERTIFY upon honor that in pursuance of Special Instructions bearing the date of the 17th day of March, 2000, I have dependently resurveyed a portion of the northerly right-of-way line of Lake Mead Drive and executed a metes-and-bounds survey in section 34, Township 21 South, Range 63 East, Mount Diablo Meridian, Nevada; and that said survey has been made in strict conformity with said special instructions, the Manual of Instructions for the Survey of the Public Lands of the United States, and in the specific manner described on this plat.

July 10, 2000
Date

Richard A. Zaninovich
Cadastral Surveyor

(A) The witness point, identical with Angle Point No. 1, at intersection of the northerly 200 ft. right-of-way line of Lake Mead Drive with the west end line of Hydro No. 20 lode, unsurveyed, monumented with a stainless steel post, 2 1/2 ins. diam., firmly set, projecting 4 ins. above the ground with brass cap mkd. as described in the field notes of the 1991-96 survey.

From this point, the NW cor. of Hydro No. 20 lode, identical with the SW cor. of Hydro No. 19 lode, both unsurveyed, bears N.31°41'W., 7.098 chs. dist., monumented with a mound of stone, and a steel fence post in the center as described in the field notes of the 1991-96 survey.

From this same point, the SW cor. of Hydro No. 14 lode, unsurveyed, bears S.31°41'E., 14.315 chs. dist., monumented with a mound of stone, and a steel fence post in the center as described in the field notes of the 1991-96 survey.

(B) Point for Angle Point No. 2.

S34 AP2
2000

Set a stainless steel post, 28 ins. long, 2 1/2 ins. diam., 24 ins. in the ground, over a plastic encased magnet, with brass cap mkd. as shown. Angle Point falls alongside corner of chain link fence, surrounding an archaeological site.

(C) Point for Angle Point No. 3.

S34 AP3
2000

Set a stainless steel post, 28 ins. long, 2 1/2 ins. diam., 24 ins. in the ground, over a plastic encased magnet, with brass cap mkd. as shown. Angle Point falls alongside corner of chain link fence, surrounding an archaeological site.

(D) Point for Angle Point No. 4.

S34 AP4
2000

Set a stainless steel post, 28 ins. long, 2 1/2 ins. diam., 24 ins. in the ground, over a plastic encased magnet, with brass cap mkd. as shown. Angle Point falls alongside corner of chain link fence, surrounding an archaeological site.

(E) Point for Angle Point No. 5.

S34 AP5
2000

Set a stainless steel post, 28 ins. long, 2 1/2 ins. diam., 24 ins. in the ground, over a plastic encased magnet, with brass cap mkd. as shown. Angle Point falls alongside corner of chain link fence, surrounding an archaeological site.

(F) Point for Angle Point No. 6.

S34 AP6
2000

Set a stainless steel post, 28 ins. long, 2 1/2 ins. diam., 24 ins. in the ground, over a plastic encased magnet, with brass cap mkd. as shown. Angle Point falls alongside corner of chain link fence, surrounding an archaeological site.

(G) Point for Angle Point No. 7.

S34 AP7
2000

Set a stainless steel post, 28 ins. long, 2 1/2 ins. diam., 24 ins. in the ground, over a plastic encased magnet, with brass cap mkd. as shown. Angle Point falls alongside corner of chain link fence, surrounding an archaeological site.

(H) Beginning of curve, at State of Nevada, Department of Highways Station "N" 238+98.53 P.T., identical with Angle Point No. 8, determined at the center of the undisturbed base of the concrete right-of-way monument described in the field notes of the 1991-96 survey; the top of the concrete monument was found broken off a short distance away.

At the corner point

Set a stainless steel post, 28 ins. long, 2 1/2 ins. diam., 18 ins. in the ground, over a plastic encased magnet and in a collar of stone, with brass cap mkd. as shown.

From this corner, a State of Nevada, Department of Highways, concrete right-of-way block, 6 ins. square, firmly set, projecting 9 ins. above the ground with a nail set in the center of the block, marked with "N" on the N. face, bears S.26°16'00"E., 6.060 chs. dist.

Line 8-1 is common with a portion of the northerly 200 ft. right-of-way line of Lake Mead Drive.

This plat represents the entire survey record of the dependent resurvey of a portion of the northerly right-of-way line of Lake Mead Drive and a metes-and-bounds survey in section 34, Township 21 South, Range 63 East, Mount Diablo Meridian, Nevada.

The pertinent history of previous surveys is as follows:

The south boundary and subdivisional lines were surveyed by U.S. Deputy Surveyor T. A. Magee in 1883 under Contract No. 149. The south boundary was resurveyed by Cadastral Engineer C. S. Swanholm in 1931 under Group No. 169. The subdivisional lines were resurveyed by Cadastral Engineer E. Voigt and Assistant Cadastral Engineer J. W. Hardison in 1943 under Group No. 336. Portions of the south boundary and subdivisional lines were resurveyed, section 34 was subdivided, and a metes-and-bounds survey of a portion of the northerly right-of-way line of Lake Mead Drive was executed by Cadastral Surveyor R. E. Williams in 1991-1996 under Group No. 713.

Measurements were made with Trimble 4700 GPS receivers. The mean bearings of the lines and horizontal equivalents of ground distances only are shown on this record.

Except as shown hereon, lottings and areas are as shown on the plat accepted September 10, 1996.

The geographic position of the NE 1/16 section corner of section 34, T.21S., R.63E., is at Lat. 36°04'57.39"N. Long. 114°55'32.18"W., NAD 27 as calculated from the resurvey executed under Group No. 713.

The mean magnetic declination is 15° E., as shown on U.S.G.S. quadrangle map "HENDERSON, NEVADA" dated 1970.

Survey executed by Richard A. Zaninovich, Cadastral Surveyor, beginning March 20, 2000, and completed March 20, 2000, pursuant to Special Instructions dated March 17, 2000, for Group No. 787, Nevada, and Assignment Instructions dated March 17, 2000.

Field Assistants:
Richard L. Jones, Cadastral Surveyor
Clay W. Morrow, Surveying Technician

UNITED STATES DEPARTMENT OF THE INTERIOR
BUREAU OF LAND MANAGEMENT

Reno, Nevada July 21, 2000

The survey represented by this plat, having been correctly executed in accordance with the requirements of law and the regulations of this Bureau, is hereby accepted.

For the Director

Mary J. M. Hantel

Acting Chief Cadastral Surveyor, Nevada