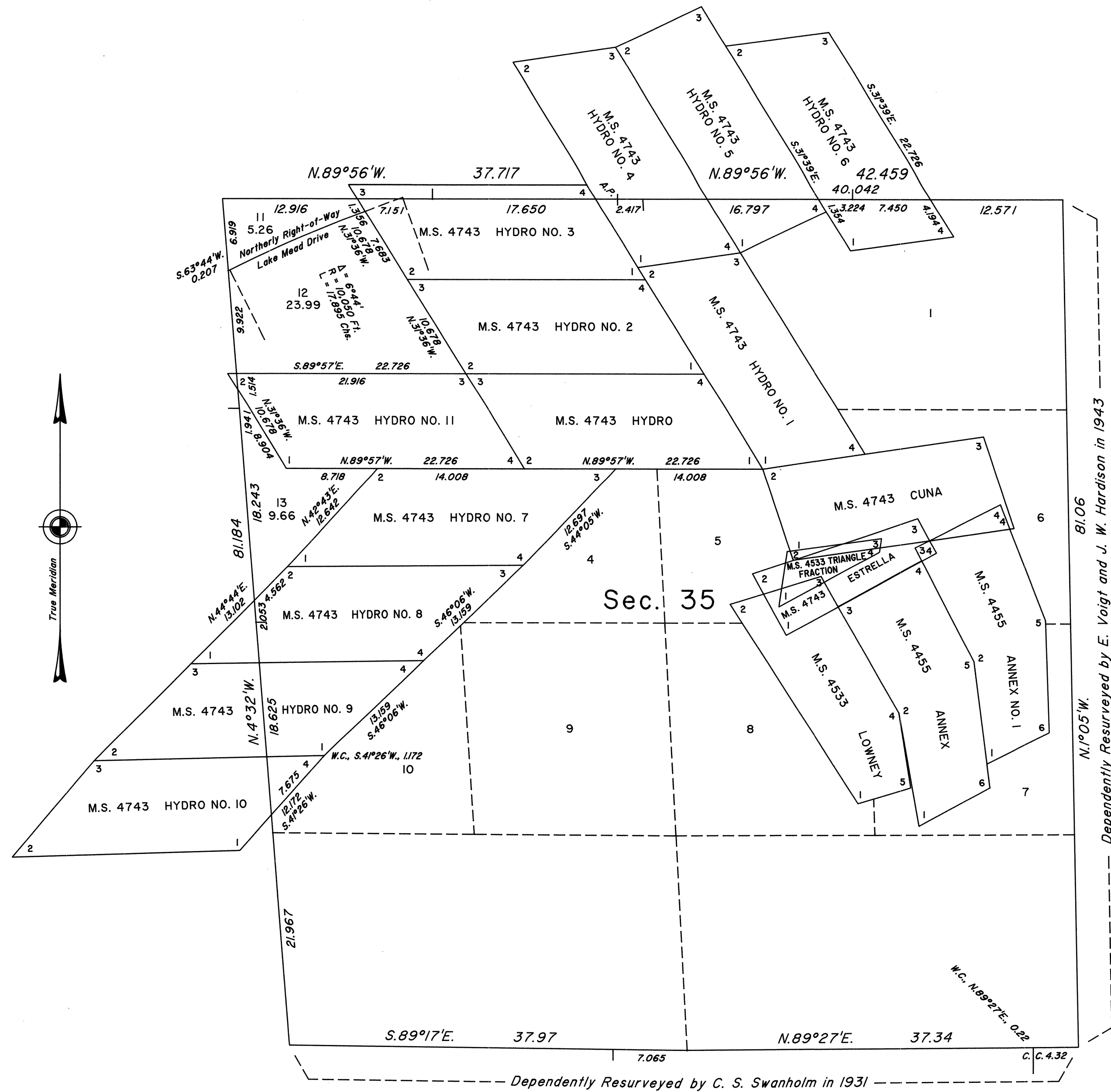


TOWNSHIP 21 SOUTH, RANGE 63 EAST, OF THE MOUNT DIABLO MERIDIAN, NEVADA

ENLARGED DIAGRAM OF SECTION 35

OFFICIALLY FILED
NEVADA STATE OFFICE
at 10:00 AM on September 12, 1996



This sheet represents enlarged diagram of section 35.
 Reference should be made to Sheet No. 1 for survey information.
 For those surveyed lines not showing bearings and distances, refer to the appropriate mineral survey record.

UNITED STATES DEPARTMENT OF THE INTERIOR
 BUREAU OF LAND MANAGEMENT

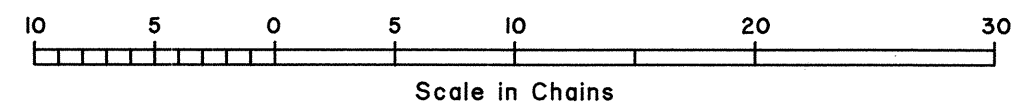
Reno, Nevada September 10, 1996

This plat is strictly conformable to the approved field notes, and the survey, having been correctly executed in accordance with the requirements of law and the regulations of this Bureau, is hereby accepted.

For the Director

Robert H. Thompson

Acting Chief Cadastral Surveyor, Nevada



GM