

TOWNSHIP 21 SOUTH, RANGE 63 EAST, OF THE MOUNT DIABLO MERIDIAN, NEVADA

DEPENDENT RESURVEY AND SUBDIVISIONS

Dependently Resurveyed by

E. Voigt and J. W. Hardison

in 1943

Sec. 28

Sec. 27

Sec. 26

Sec. 33

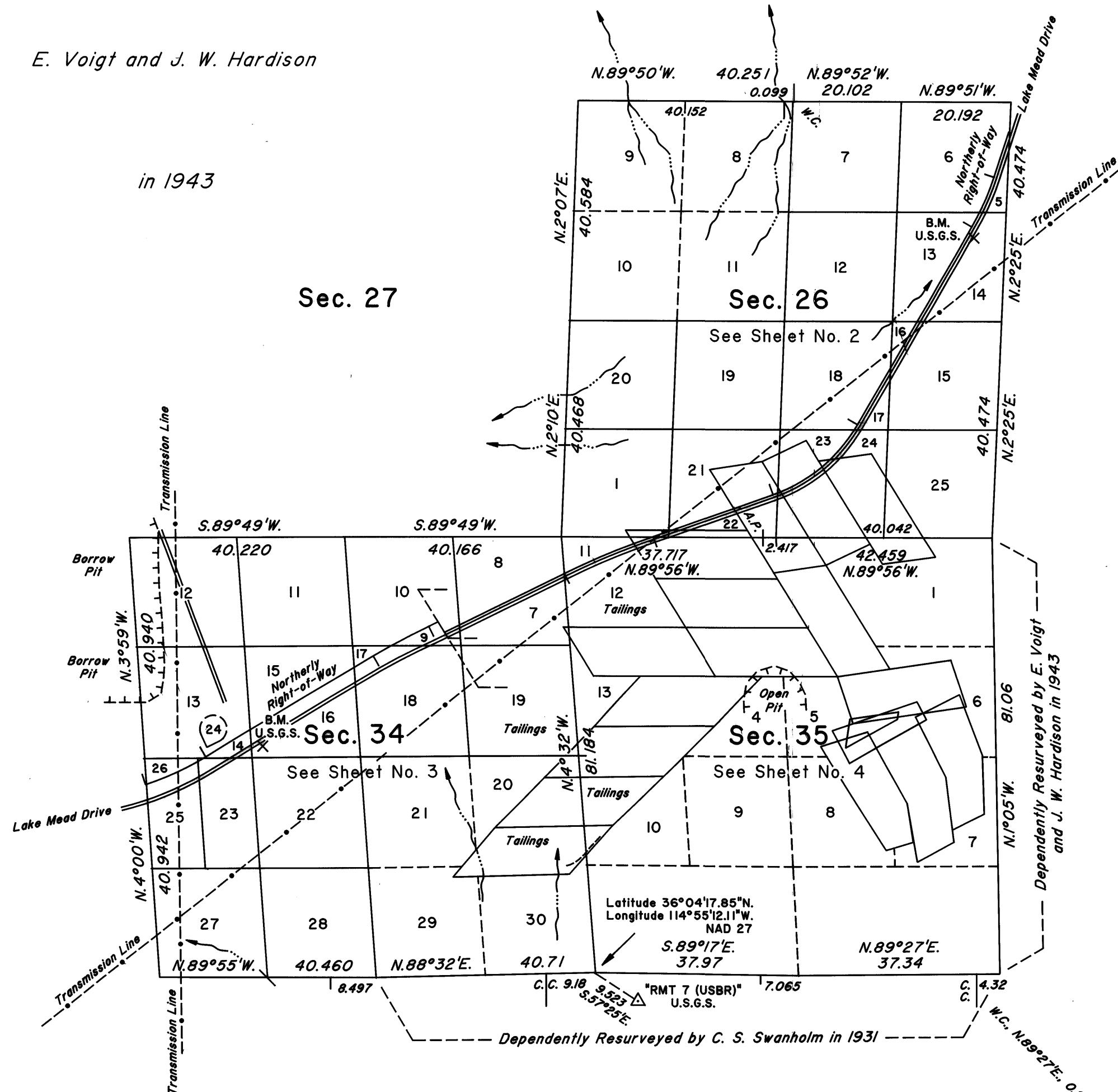
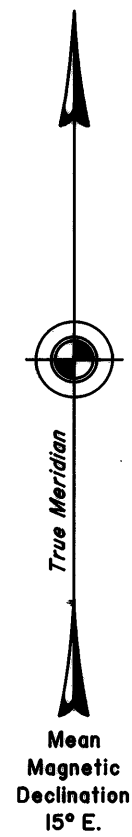
Sec. 34

Sec. 35

Sec. 3

Sec. 2

Sec. 1



A history of surveys is contained in the field notes.

This plat, in four sheets, represents the dependent re-survey of a portion of the south boundary, a portion of the subdivisional lines and a portion of Mineral Survey No. 4743, designed to restore the corners in their true original locations according to the best available evidence, and the subdivision of sections 26 and 34, and the metes-and-bounds survey of a portion of the northerly right-of-way of Lake Mead Drive, Township 21 South, Range 63 East, Mount Diablo Meridian, Nevada.

Except as indicated hereon, the lottings and areas are as shown on the plat approved February 6, 1884 and the plat accepted August 28, 1943.

Survey executed by Ronald E. Williams, Cadastral Surveyor, beginning October 29, 1991, and completed February 8, 1996, pursuant to Special Instructions dated October 22, 1991, for Group No. 713, Nevada.

For enlargements of sections 26, 34 and 35, see Sheet Nos. 2, 3 and 4, respectively.

UNITED STATES DEPARTMENT OF THE INTERIOR
BUREAU OF LAND MANAGEMENT

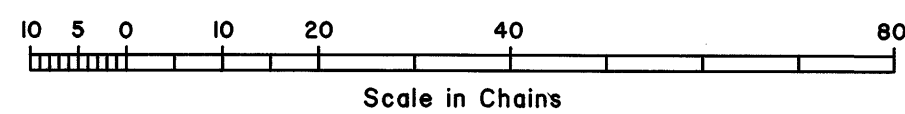
Reno, Nevada September 10, 1996

This plat is strictly conformable to the approved field notes, and the survey, having been correctly executed in accordance with the requirements of law and the regulations of this Bureau, is hereby accepted.

For the Director

Robert H. Thompson

Acting Chief Cadastral Surveyor, Nevada



OFFICIALLY FILED
NEVADA STATE OFFICE
at 10:00 AM on September 12, 1996