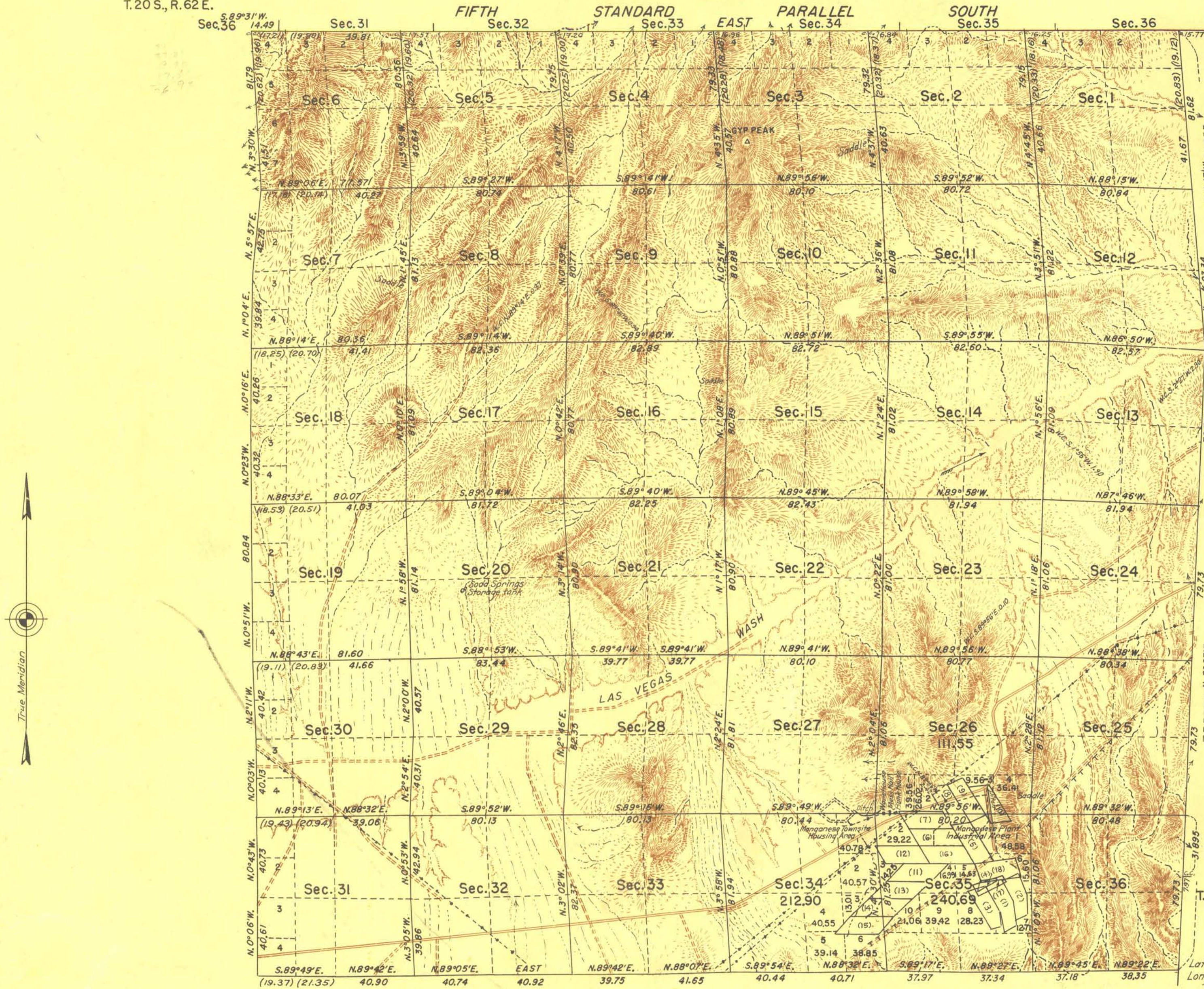


# TOWNSHIP N° 21 SOUTH, RANGE N° 63 EAST, OF THE MOUNT DIABLO MERIDIAN, NEVADA.

T.20 S., R.62 E.

T.20 S., R.64 E.

## DEPENDENT RESURVEY



### LIST OF MINERAL CLAIMS

Survey No	Annex	Lode
(1)	Survey N° 4455	Annex N°1
(2)	" " "	Annex N°1
(3)	" " "	4533 Lowney
(4)	" " "	Triangle Fraction
(5)	" " "	4743 Hydro N°1
(6)	" " "	Hydro N°2
(7)	" " "	Hydro N°3
(8)	" " "	Hydro N°4
(9)	" " "	Hydro N°5
(10)	" " "	Hydro N°6
(11)	" " "	Hydro N°7
(12)	" " "	Hydro N°11
(13)	" " "	Hydro N°8
(14)	" " "	Hydro N°9
(15)	" " "	Hydro N°10
(16)	" " "	Hydro
(17)	" " "	Estrella
(18)	" " "	Cuna

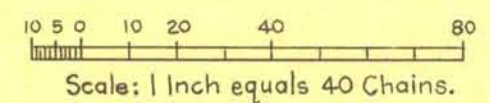
The numbers (1) to (18) appearing in the mineral claims on this plat have reference only to the above tabulations.

This plat of the resurvey of Township N° 21 South, Range N° 63 East, delineates a retracement and reestablishment of the lines of the original survey as shown upon plat approved Feb. 6, 1884, in their true original position according to the best available evidence of the position of the original corners; all differences between the measurements shown on the original plat and those derived in the retracement have been distributed proportionally between accepted corners in accordance with surveying rules; reference will be made to the original plat for the showing of the areas and more detailed descriptions of the various smaller subdivisions except where new areas are shown hereon.

Authority for this resurvey is contained in General Land Office memorandum 1907765 "E" dated July 14, 1942.

T.22 S., R.63 1/2 E.

Latitude: 36° 04' N.  
Longitude: 114° 53' W.



Area of tract segregations 321.50 Acres  
 Area exclusive of tract segregations 22551.77 "  
 Total area of township 22873.27 "

### UNITED STATES DEPARTMENT OF THE INTERIOR GENERAL LAND OFFICE

Denver, Colorado, Aug. 18, 1943  
 This plat of Township N° 21 South, Range N° 63 East of the Mount Diablo Meridian, Nevada, is strictly conformable to the field notes of the survey thereof which have been examined and approved.

*Russell H. Allen*  
 Acting Assistant Supervisor of Surveys.

Washington, D. C., Aug. 28, 1943  
 The survey represented by this plat having been correctly executed in accordance with the requirements of law and the regulations of this office, is hereby accepted.

*Joel David Wolfson*  
 Assistant Commissioner.

LINES DESIGNATED	BY WHOM SURVEYED	GROUP N°	DATE OF SPECIAL INSTRUCTIONS	WHEN SURVEYED	
				BEGUN	COMPLETED
Extension, E. Subdivisional	E. Voigt & J. W. Hardison	336	August 11, 1942	Jan. 11, 1943	May 6, 1943
	" " " "	"	" " "	" " "	" " "

Plat. F.B.d.  
 Computing - G.N. - A.N.