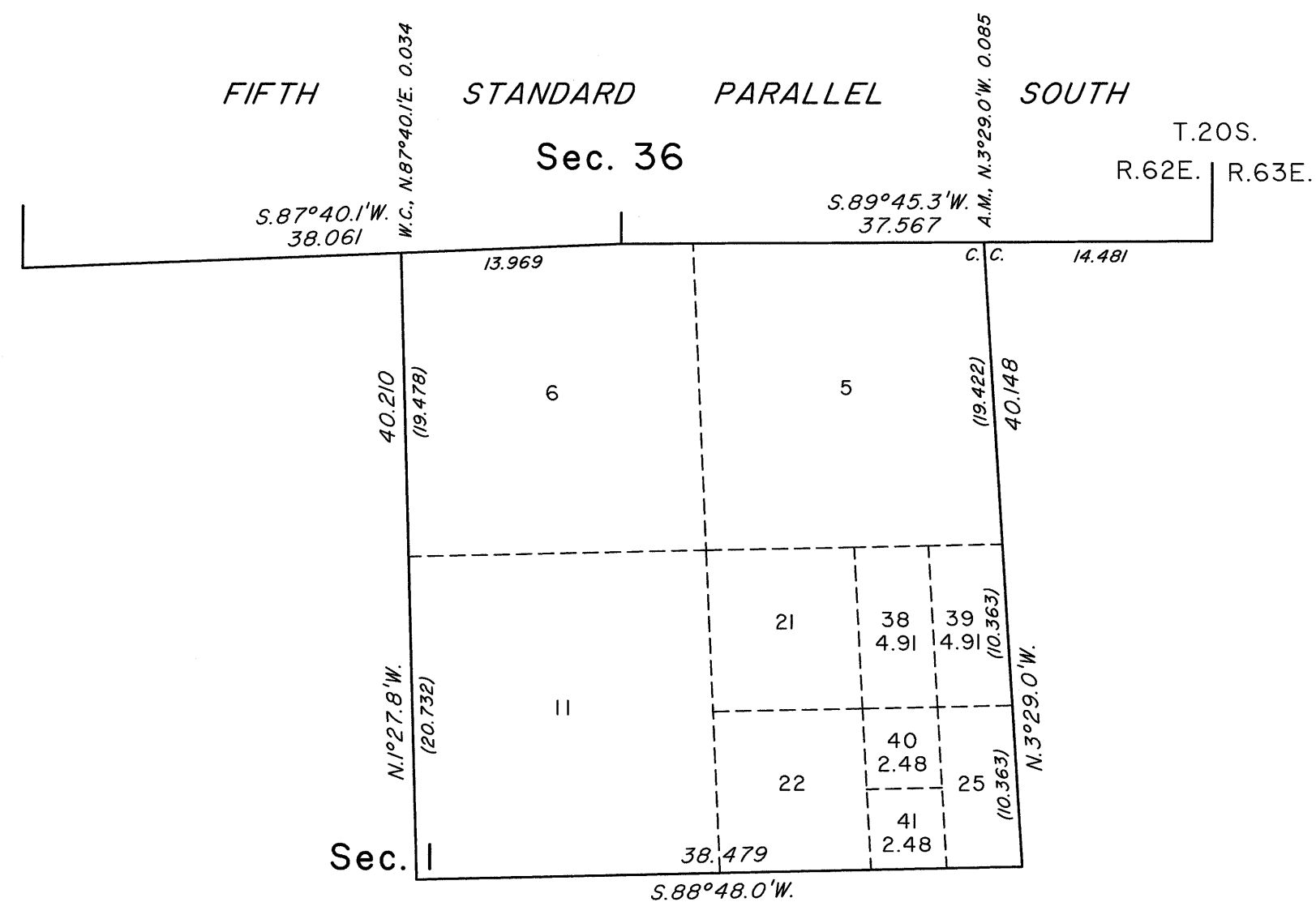
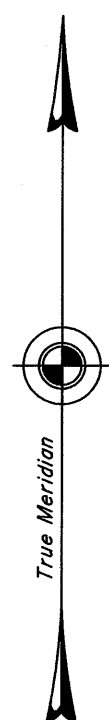


TOWNSHIP 21 SOUTH, RANGE 62 EAST, OF THE MOUNT DIABLO MERIDIAN, NEVADA
SUPPLEMENTAL PLAT OF THE NE 1/4 OF SECTION 1



This plat, showing the subdivision of former lots 23 and 24, section 1, Township 21 South, Range 62 East, Mount Diablo Meridian, Nevada, based on the plats accepted August 30, 1994 and October 24, 2012, is prepared to accommodate a direct land sale under provisions of the Federal Land Policy and Management Act.

Plat prepared by Clay W. Morrow, Cartographic Technician, on November 14, 2012, pursuant to supplemental special instructions dated November 14, 2012 and assignment instructions dated November 14, 2012, for Group No. 917, Nevada.

Except as indicated hereon, the lottings and areas are as shown on the plats accepted August 28, 1943, August 30, 1994 and October 24, 2012.

UNITED STATES DEPARTMENT OF THE INTERIOR
BUREAU OF LAND MANAGEMENT

Reno, Nevada November 27, 2012

This plat, showing amended lottings, is based upon the official records, and having been correctly prepared in accordance with the requirements of the law and the regulations of this Bureau, is hereby accepted.

For the Director

Chief Cadastral Surveyor for Nevada

