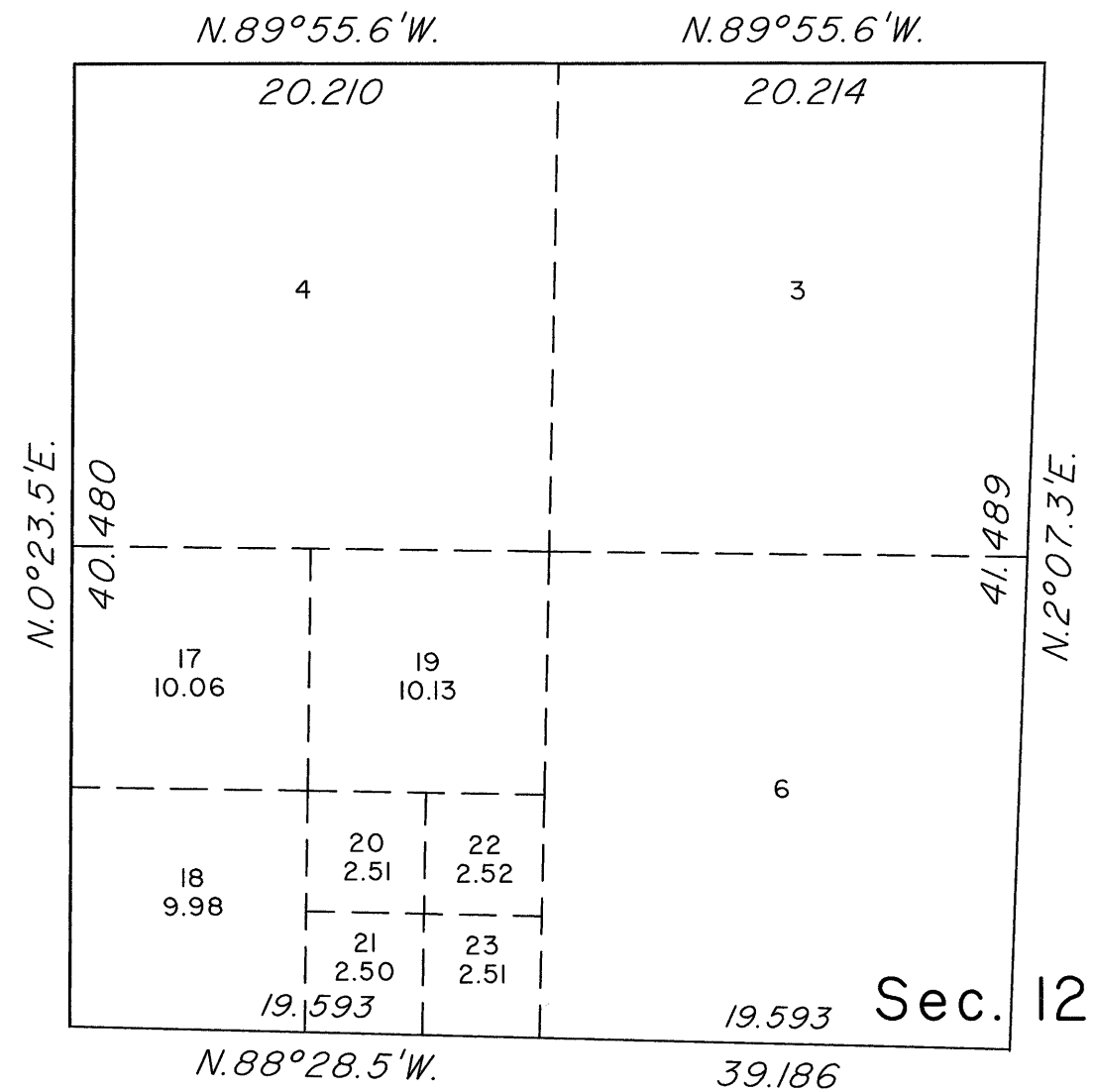
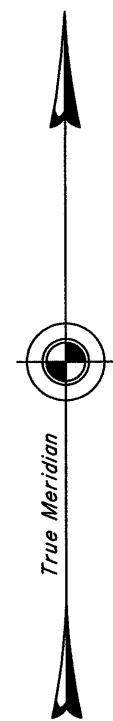


TOWNSHIP 21 SOUTH, RANGE 62 EAST, OF THE MOUNT DIABLO MERIDIAN, NEVADA  
SUPPLEMENTAL PLAT OF THE NW 1/4 OF SECTION 12



This plat showing a subdivision of former lot 5, Sec. 12, Township 21 South, Range 62 East, Mount Diablo Meridian, Nevada, based upon the plat approved November 11, 1881, and plats accepted August 18, 1943 and August 30, 1994, is prepared to accommodate a direct land sale under provisions of the Federal Policy and Mangement Act.

This plat prepared by Clay W. Morrow, Cartographic Technician, beginning August 30, 2012 and completed October 17, 2012, pursuant to special instructions dated August 30, 2012, and assignment instructions dated August 30, 2012, for Group No 917, Nevada.

Except as indicated hereon, the lotting and areas are shown on the plats accepted August 28, 1943 and August 30, 1994.

UNITED STATES DEPARTMENT OF THE INTERIOR  
BUREAU OF LAND MANAGEMENT

Reno, Nevada      October 24, 2012

This plat, showing amended lottins, is based upon the official records and, having been correctly prepared in accordance with the requirements of the law and the regulations of this Bureau, is hereby accepted.

For the Director

Chief Cadastral Surveyor for Nevada

