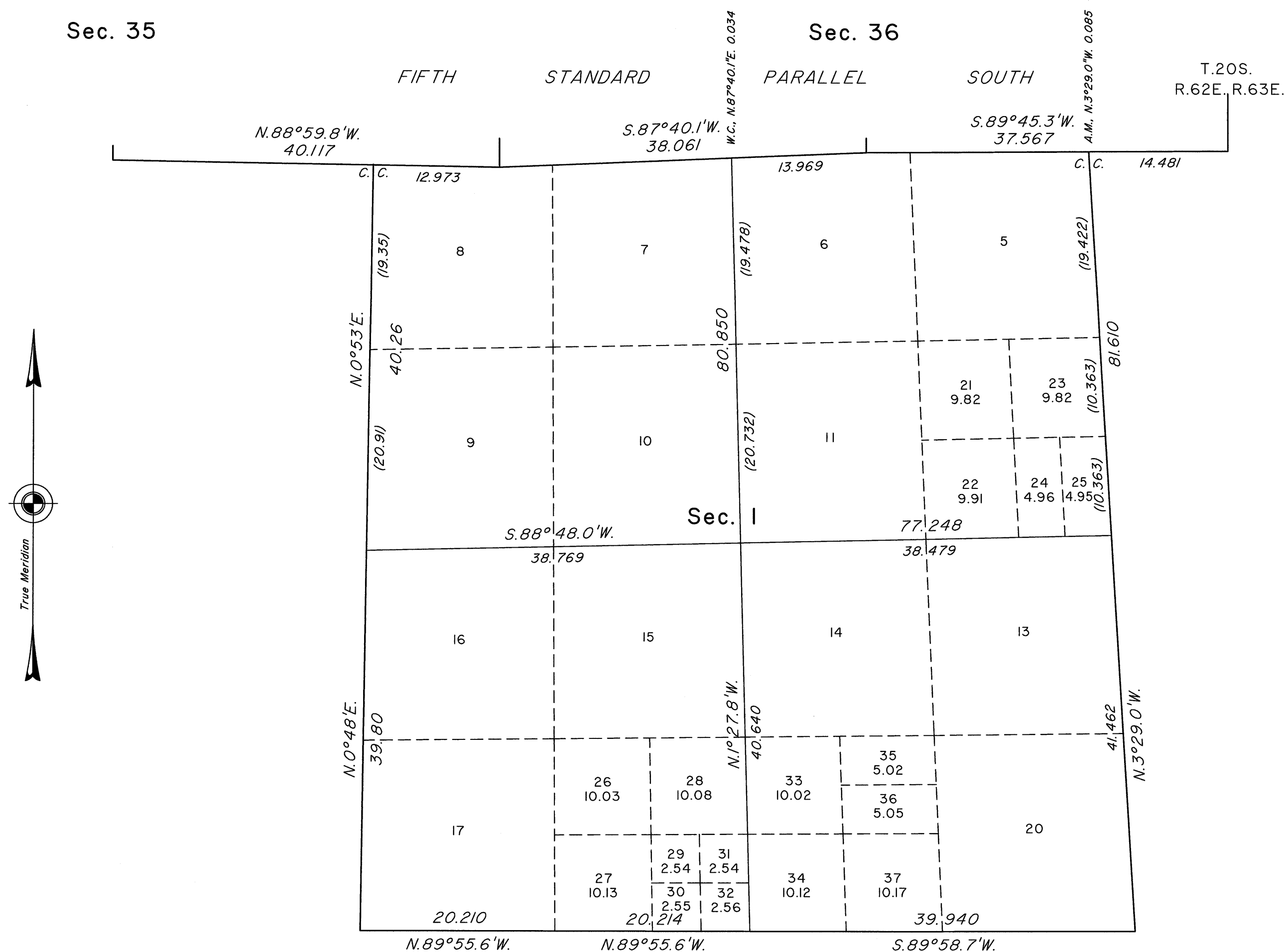


# TOWNSHIP 21 SOUTH, RANGE 62 EAST, OF THE MOUNT DIABLO MERIDIAN, NEVADA

## SUPPLEMENTAL PLAT OF SECTION I



This plat showing a subdivision of former lots 12, 18, and 19, section I, Township 21 South, Range 62 East, Mount Diablo Meridian, Nevada, based on the plat accepted August 30, 1994, is prepared to accommodate a direct land sale under provisions of the Federal Land Policy and Management Act.

Plat prepared by Clay W. Morrow, Cartographic Technician, beginning August 30, 2012 and completed October 17, 2012, pursuant to special instructions dated August 30, 2012 and assignment instructions dated August 30, 2012, for Group No. 917, Nevada.

Except as indicated hereon, the lotting and areas are shown on the plats accepted August 28, 1943, and August 30, 1994.

UNITED STATES DEPARTMENT OF THE INTERIOR  
BUREAU OF LAND MANAGEMENT

Reno, Nevada October 24, 2012

This plat, showing amended lottings, is based on the official records and, having been correctly prepared in accordance with the requirements of law and the regulations of this Bureau, is hereby accepted.

For the Director

*David D. Morrow*

Chief Cadastral Surveyor for Nevada

