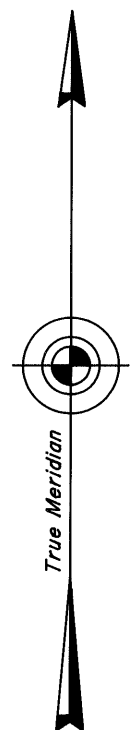
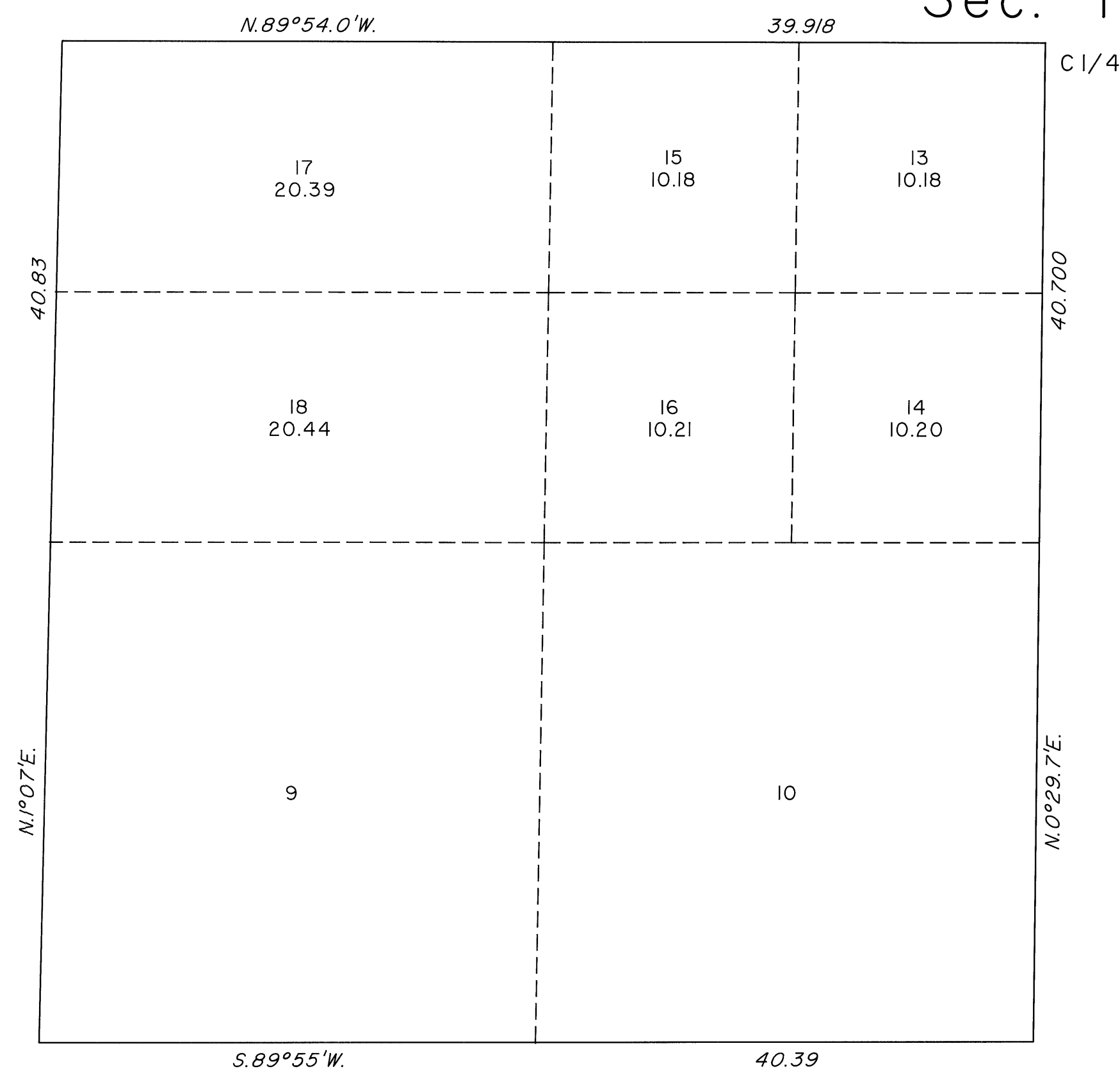


TOWNSHIP 21 SOUTH, RANGE 62 EAST, OF THE MOUNT DIABLO MERIDIAN, NEVADA
SUPPLEMENTAL PLAT OF THE SW 1/4 SECTION 11

Sec. 11



This plat, showing a subdivision of lots 7 and 8, sec. 11, T.21S., R.62E., Mount Diablo Meridian, Nevada, is based upon the plat approved November 23, 1881, and the plats accepted August 28, 1943, and August 30, 1994.

UNITED STATES DEPARTMENT OF THE INTERIOR
BUREAU OF LAND MANAGEMENT

Reno, Nevada June 22, 2004

This plat, showing amended lottings, is based upon the official records, and having been correctly prepared in accordance with the regulations of this Bureau, is hereby accepted.

For the Director

David J. Clark

Acting Chief Cadastral Surveyor, Nevada

